

Plastik Kalıbı Grubu

- D 02 Şapkalı Kademeli Kolon
- D 20 Şapkalı Buç
- D 01 Şapkalı Kolon
- D 01 D Şapkalı Kolon (Yağ Kanalsız)
- D 03 Kuyruklu Şapkalı Kademeli Kolon
- D 21 Kuyruklu Şapkalı Burç
- D 40 Tespit Burcu
- D 22 Ortadan Flanşlı Burç
- D 22 B Ortadan Flanşlı Bilyalı Burç Takım
- D 08 Şapkalı Kolon (Yağ Kanalsız)
- D 09 Düz Kolon
- D 50 Konik Kitleme

Plastik ve Kesme Ortak Grup

- D 22 B Ortadan Flanşlı Bilyalı Burç Takım
- D 23 Ortadan Şapkalı Burç
- D 24 Üstten Şapkalı Burç
- D 25 Bronzlu Burç
- D 26 Bronzlu Burç
- D 32 Sinterli Burçü
- D 33 Sinterli Burç

Kesme Kalıbı Grubu

- D 00 Bilyalı Şapkalı Kolon
- D 05 Arkası Kalın Kolon
- D 23 Ortadan Şapkalı Burç
- D 24 Üstten Şapkalı Burç
- D 25 Bronzlu Burç
- D 26 Bronzlu Burç
- D 28 Kısa Bilyalı Burç
- D 32 Sinterli Burç
- D 33 Sinterli Burç
- D 27 Şapkalı Bilyalı Burç
- D 60 Bilyalı Kafes
- D 60.1 Bilyalı Kafes Tutucu
- D 30 Grafitli Burçlar
- D 70.11 Döküm Blok Set
- D 11 Düz Kolon
- D 80 Grafitli Sürtünme Plakaları
- D 80 Çelik Sürtünme Plakaları
- D 88 Düz Kam
- D 10 Düz Kolon
- D 70 Döküm Bloklar
- D 90 Bağlama Pabucu



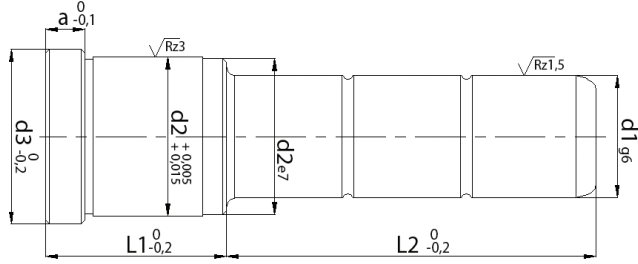
ŞKK D02

Şapkalı Kademeli Kolon

Malzeme : Asil Çelik 1.1213 (Cf 53)

Sertlik : 62± 2 HRC

Isıl İşlem : İndüksiyon



Ø	d1	L1	L2	d2	d3	a	
	D02_12026026	12	26	26	16	19	4
	036		36				
	046		46				
	056		56				
	D02_12036026	12	36	26	16	19	4
	036		36				
	046		46				
	056		56				
	D02_12046026	12	46	26	16	19	4
	036		36				
	046		46				
	056		56				
	066		66				
	D02_14026026	14	26	26	20	25	6
	036		36				
	046		46				
	056		56				
	066		66				
	076		76				
	D02_14036026	14	36	26	20	25	6
	036		36				
	046		46				
	056		56				
	066		66				
	086		86				
	D02_14046026	14	46	26	20	25	6
	036		36				
	046		46				
	056		56				
	076		76				
	096		96				
	D02_14056026	14	56	26	20	25	6
	036		36				
	046		46				
	066		66				
	086		86				
	106		106				
	D02_16026026	16	26	26	24	28	6
	036		36				
	046		46				
	056		56				
	076		76				

Ø	d1	L1	L2	d2	d3	a	Sipariş Şekli: d1xL1xL2
	D02_16026096	16	26	96	24	28	6
	D02_16036026	16	36	26	24	28	6
	036		36				
	046		46				
	056		56				
	066		66				
	086		86				
	106		106				
	D02_16046026	16	46	26	24	28	6
	036		36				
	046		46				
	056		56				
	066		66				
	076		76				
	096		96				
	116		116				
	D02_16056026	16	56	26	24	28	6
	036		36				
	046		46				
	056		56				
	066		66				
	076		76				
	096		96				
	116		116				
	D02_16066026	16	66	26	24	28	6
	036		36				
	046		46				
	056		56				
	066		66				
	076		76				
	086		86				
	106		106				
	116		116				
	D02_16076026	16	76	26	24	28	6
	036		36				
	046		46				
	056		56				
	066		66				
	076		76				
	096		96				
	116		116				
	D02_16086026	16	86	26	24	28	6

ŞKK D02

Şapkalı Kademeli Kolon

Malzeme : Asil Çelik 1.1213 (Cf 53)

Sertlik : 62± 2 HRC

Isıl İşlem : İndüksiyon



Sipariş Kodu	Ø	L1	L2	d2	d3	a
D02_16086036	16	86	36	24	28	6
046			46			
056			56			
066			66			
076			76			
096			96			
116			116			
D02_18026026	18	26	26	26	31	6
036			36			
046			46			
056			56			
066			66			
086			86			
D02_18036026	18	36	26	26	31	6
036			36			
046			46			
056			56			
066			66			
086			86			
106			106			
D02_18046026	18	46	26	26	31	6
036			36			
046			46			
056			56			
066			66			
086			86			
106			106			
126			126			
D02_18056026	18	56	26	26	31	6
036			36			
046			46			
056			56			
066			66			
086			86			
106			106			
126			126			
D02_18066026	18	66	26	26	31	6
036			36			
056			56			
076			76			
096			96			
116			116			
D02_18076026	18	76	26	26	31	6
046			46			
066			66			
086			86			
106			106			
126			126			
D02_18086026	18	86	26	26	31	6
046			46			
066			66			
086			86			
106			106			
126			126			
D02_20026026	20	26	26	28	32	6
036			36			
046			46			
056			56			
066			66			

Sipariş Kodu	Ø	L1	L2	d2	d3	a
D02_20036026	20	36	26	28	32	6
036			36			
046			46			
056			56			
066			66			
076			76			
096			96			
D02_20046026	20	46	26	28	32	6
036			36			
046			46			
056			56			
066			66			
076			76			
086			86			
106			106			
D02_20056026	20	56	26	28	32	6
036			36			
046			46			
056			56			
066			66			
076			76			
096			96			
116			116			
D02_20066026	20	66	26	28	32	6
036			36	28	32	6
046			46			
056			56			
066			66			
076			76			
096			96			
116			116			
D02_20076026	20	76	26	28	32	6
036			36			
046			46			
056			56			
066			66			
076			76			
086			86			
106			106			
126			126			
D02_20086026	20	86	26	28	32	6
036			36			
046			46			
056			56			
066			66			
076			76			
086			86			
106			106			
126			126			
D02_20096026	20	96	26	28	32	6
036			36			
046			46			
056			56			
066			66			
076			76			
086			86			
106			106			
126			126			

ŞKK D02

Kademeli Kolon

Malzeme : Asil Çelik 1.1213 (Cf 53)

Sertlik : 62± 2 HRC

Isıl İşlem : İndüksiyon



↓	Ø						↓	Ø				Sipariş Şekli: d1xL1xL2	
Sipariş Kodu	d1	L1	L2	d2	d3	a	Sipariş Kodu	d1	L1	L2	d2	d3	a
D02_25026026	25	26	26	34	38	8	D02_25096036	25	96	36	34	38	8
036			36				046			46			
046			46				056			56			
056			56				066			66			
066			66				076			76			
076			76				086			86			
096			96				096			96			
D02_25036026	25	36	26	34	38	8	116			116			
036			36				136			136			
046			46				D02_25106046	25	106	46	34	38	8
056			56				056			56			
066			66				066			66			
076			76				076			76			
086			86				086			86			
106			106				096			96			
D02_25046026	25	46	26	34	38	8	116			116			
036			36				136			136			
046			46				D02_30036036	30	36	36	39	43	10
056			56				046			46			
066			66				056			56			
076			76				066			66			
096			96				086			86			
116			116				106			106			
D02_25056026	25	56	26	34	38	8	D02_30046036	30	46	36	39	43	10
036			36				046			46			
046			46				056			56			
056			56				066			66			
066			66				076			76			
076			76				096			96			
096			96				116			116			
116			116				D02_30056036	30	56	36	39	43	10
D02_25066026	25	66	26	34	38	8	046			46			
036			36				056			56			
046			46				066			66			
056			56				076			76			
066			66				086			86			
076			76				106			106			
086			86				126			126			
106			106				D02_30066036	30	66	36	39	43	10
126			126				046			46			
D02_25076026	25	76	26	34	38	8	056			56			
036			36				066			66			
046			46				076			76			
056			56				086			86			
066			66				096			96			
076			76				116			116			
086			86				136			136			
106			106				D02_30076036	30	76	36	39	43	10
126			126				046			46			
D02_25086036	25	86	36	34	38	8	056			56			
046			46				076			76			
056			56				086			86			
066			66				096			96			
076			76				116			116			
086			86				136			136			
096			96				D02_30086036	30	86	36	39	43	10
116			116				046			46			
136			136				066			66			
							086			86			
							106			106			
							126			126			
							146			146			

ŞKK D02

Kademeli Kolon

Malzeme : Asil Çelik 1.1213 (Cf 53)

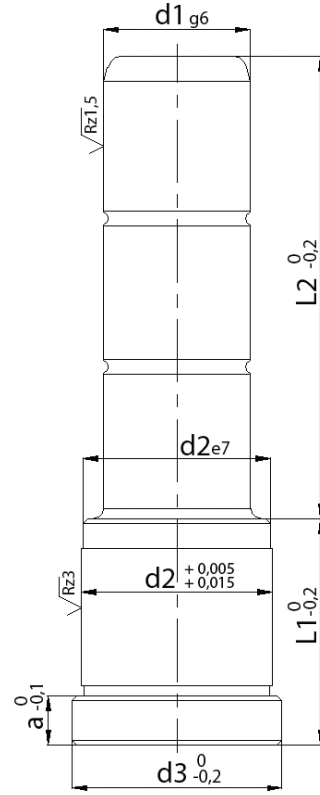
Sertlik : 62± 2 HRC

Isıl İşlem : İndüksiyon



Sipariş Şekli: d1xL1xL2							
Sipariş Kodu	Ø	d1	L1	L2	d2	d3	a
D02_30096046	30	96	46	39	43	10	
066			66				
086			86				
106			106				
126			126				
146			146				
D02_30106056	30	106	56	39	43	10	
076			76				
096			96				
116			116				
136			136				
D02_30116056	30	116	56	39	43	10	
076			76				
096			96				
116			116				
136			136				
D02_40056056	40	56	56	54	58	10	
086			86				
106			106				
126			126				
156			156				
186			186				
D02_40066066	40	66	66	54	58	10	
096			96				
116			116				
136			136				
166			166				
196			196				
D02_40076076	40	76	76	54	58	10	
106			106				
126			126				
146			146				
166			166				
196			196				
216			216				
D02_40086086	40	86	86	54	58	10	
126			126				
146			146				
176			176				
206			206				
226			226				
D02_40096096	40	96	96	54	58	10	
136			136				
156			156				
186			186				
216			216				
236			236				
D02_40106106	40	106	106	54	58	10	
126			126				
156			156				
186			186				
226			226				
246			246				
D02_40116116	40	116	116	54	58	10	
136			136				
166			166				
196			196				
236			236				
256			256				

Sipariş Kodu	Ø	d1	L1	L2	d2	d3	a
D02_40126126	40	126	126	54	58	10	
166			166				
196			196				
236			236				
266			266				
D02_40136136	40	136	136	54	58	10	
196			196				
226			226				
266			266				

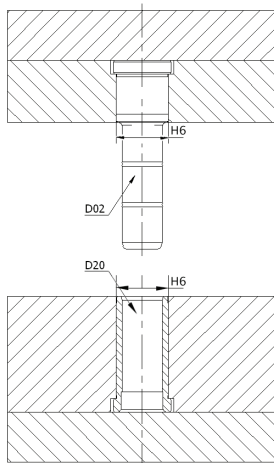
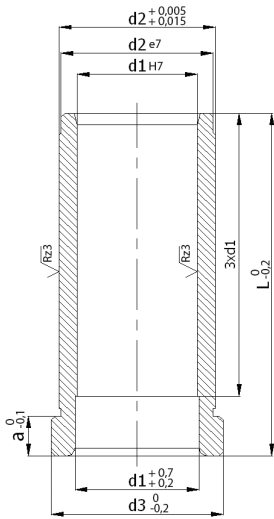


D20

ŞB

Burç / Guide Bush

Malzeme : Asil Çelik 1.7131 (16MnCr5)
Sertlik : 62± 2 HRC
Isıl İşlem : Sementasyon



Sipariş Şekli: d1xL

Sipariş Kodu	d1	L	d2	d3	a
D20_12026	12	26	16	19	4
036		36			
046		46			
056		56			
066		66			
D20_14026	14	26	20	25	6
036		36			
046		46			
056		56			
066		66			
076		76			
D20_16026	16	26	24	28	6
036		36			
046		46			
056		56			
066		66			
076		76			
086		86			
D20_18026	18	26	26	31	6
036		36			
046		46			
056		56			
066		66			
076		76			
086		86			
D20_20026	20	26	28	32	6
036		36			
046		46			
056		56			
066		66			
076		76			
086		86			
096		96			
D20_25026	25	26	34	38	8
036		36			
046		46			
056		56			
066		66			
076		76			
086		86			
096		96			
106		106			
D20_30036	30	36	39	43	10
046		46			
056		56			
066		66			
076		76			
086		86			
096		96			
106		106			
116		116			
D20_40046	40	46	54	58	10
056		56			
066		66			
076		76			
086		86			
096		96			
106		106			
116		116			
126		126			
136		136			
146		146			

KŞKK

Sipariş Şekli: d1xL1xL2

Sipariş Kodu	d1	Sipariş Kodu	d1	L1	L2	L3	L4	d2	d3	a
D03_30066045	30	D03_32066045	32	66	45	9	7	42	47	6
055		055			55					
075		075			75					
095		095			95					
115		115			115					
135		135			135					
155		155			155					
175		175			175					
245		245			245					
295		295			295					
D03_30076055	30	D03_32076055	32	76	55	9	7	42	47	6
075		075			75					
095		095			95					
115		115			115					
D03_30076135	30	D03_32076135	32	76	135	9	7	42	47	6
155		155			155					
225		225			225					
D03_30086055	30	D03_32086055	32	86	55	9	7	42	47	6
075		075			75					
095		095			95					
115		115			115					
135		135			135					
155		155			155					
225		225			225					
D03_30096055	30	D03_32096055	32	96	55	9	7	42	47	6
075		075			75					
095		095			95					
115		115			115					
135		135			135					
155		155			155					
205		205			205					
D03_30106075	30	D03_32106075	32	106	75	9	7	42	47	6
095		095			95					
115		115			115					
125		125			125					
145		145			145					
165		165			165					
D03_30116075	30	D03_32116075	32	116	75	9	7	42	47	6
095		095			95					
115		115			115					
135		135			135					
155		155			155					
D03_30136095	30	D03_32136095	32	136	95	9	7	42	47	6
115		115			115					
135		135			135					
155		155			155					
D03_30156115	30	D03_32156115	32	156	115	9	7	42	47	6
155		155			155					
D03_30196155	30	D03_32196155	32	196	155	9	7	42	47	6
195		195			195					
D03_40046095	40	D03_42046095	42	46	95	12	7	54	60	10
165		165			165					
D03_40056075	40	D03_42056075	42	56	75	12	7	54	60	10
115		115			115					
155		155			155					
195		195			195					
D03_40066075	40	D03_42066075	42	66	75	12	7	54	60	10
135		135			135					
D03_40076075	40	D03_42076075	42	76	75	12	7	54	60	10
115		115			115					
175		175			175					
D03_40086075	40	D03_42086075	42	86	75	12	7	54	60	10
135		135			135					

Sipariş Kodu	d1	Sipariş Kodu	d1	L1	L2	L3	L4	d2	d3	a
D03_40096075	40	D03_42096075	42	96	75	12	7	54	60	10
115		115			115					
155		155			155					
D03_40116095	40	D03_42116095	42	116	95	12	7	54	60	10
135		135			135					
195		195			195					
D03_40136095	40	D03_42136095	42	136	95	12	7	54	60	10
135		135			135					
215		215			215					
D03_40156115	40	D03_42156115	42	156	115	12	7	54	60	10
155		155			155					
215		215			215					
D03_40196155	40	D03_42196155	42	196	155	12	7	54	60	10
195		195			195					
235		235			235					
D03_40246165	40	D03_42246165	42	246	165	12	7	54	60	10
245		245			245					

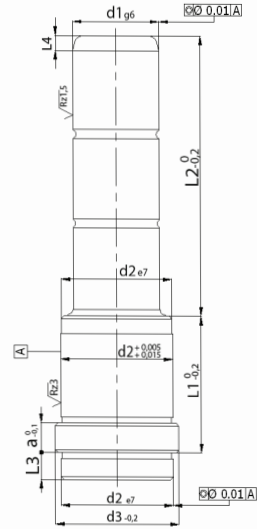
D03

Kuyruklu Kolon

Malzeme : Asil Çelik 1.1213 (Cf53)

Sertlik : 62± 2 HRC

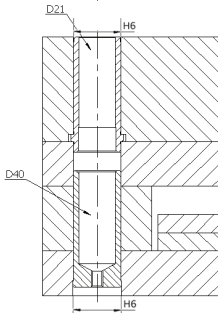
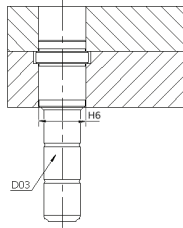
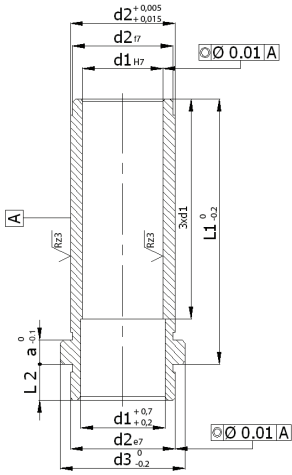
Isıl İşlem : İndüksiyon



D21

Kuyruklu Burç / Tailed Guide Bush

Malzeme : Asil Çelik 1.7131 (16MnCr5)
Sertlik : 62± 2 HRC
Isıl İşlem : Sementasyon



KŞB

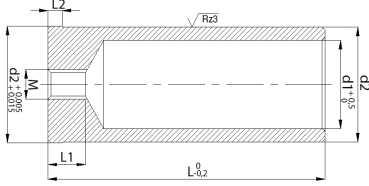
Ø Sipariş Şekli: d1xL1

Sipariş Kodu	d1	Sipariş Kodu	d1	L1	d2	d3	a	L2
D21_14017	14	D21_15017	15	17	20	25	6	9
022		022		22				
027		027		27				
036		036		36				
046		046		46				
056		056		56				
066		066		66				
076		076		76				
086		086		86				
096		096		96				
116		116		116				
D21_18017	18	D21_20017	20	17	26	31	6	9
022		022		22				
027		027		27				
036		036		36				
046		046		46				
056		056		56				
066		066		66				
076		076		76				
086		086		86				
096		096		96				
106		106		106				
116		116		116				
136		136		136				
D21_22017	22	D21_24017	24	17	30	35	6	9
022		022		22				
027		027		27				
036		036		36				
046		046		46				
056		056		56				
066		066		66				
076		076		76				
086		086		86				
096		096		96				
106		106		106				
116		116		116				
136		136		136				
156		156		156				
D21_30027	30	D21_32027	32	27	42	47	6	9
036		036		36				
046		046		46				
056		056		56				
D21_30066	30	D21_32066	32	66	42	47	6	9
076		076		76				
086		086		86				
096		096		96				
106		106		106				
116		116		116				
126		126		126				
136		136		136				
156		156		156				
196		196		196				
D21_40046	40	D21_42046	42	46	54	60	10	12
056		056		56				
066		066		66				
076		076		76				
086		086		86				
096		096		96				
116		116		116				
136		136		136				
156		156		156				
196		196		196				
246		246		246				

D40

Tespit Burcu / Centring Sleeves

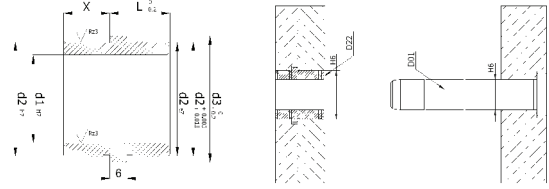
Malzeme : Asil Çelik 1.7131 (16MnCr5)
Sertlik : 62± 2 HRC
Isıl İşlem : Sementasyon



D22

Flanşlı Burç

Malzeme : Asil Çelik 1.7131 (16MnCr5)
Sertlik : 62± 2 HRC
Isıl İşlem : Sementasyon



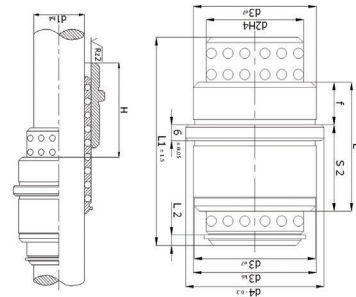
Sipariş Kodu	Ø	d2	L	d1	M	L1	L2	d2 Tol.
D40_20030	20	30	30	16	12	10	2	g6
040		40	40					
060		60	60					
080		80	80					
100		100	100					
120		120	120					
140		140	140					
160		160	160					
D40_26030	26	30	30	21	12	13	2.5	g6
040		40	40					
060		60	60					
080		80	80					
100		100	100					
120		120	120					
140		140	140					
160		160	160					
180		180	180					
D40_30040	30	40	40	25	12	13	2.5	g6
060		60	60					
080		80	80					
100		100	100					
120		120	120					
140		140	140					
160		160	160					
180		180	180					
200		200	200					
240		240	240					
D40_42040	42	40	40	33	12	16	4.5	g6
060		60	60					
080		80	80					
100		100	100					
120		120	120					
140		140	140					
160		160	160					
180		180	180					
200		200	200					
220		220	220					
260		260	260					
300		300	300					
D40_54060	54	60	60	43	12	16	4.5	f6
080		80	80					
120		120	120					
D40_54160	54	160	160	43	12	16	4.5	f6
200		200	200					
240		240	240					
280		280	280					

Sipariş Kodu	Ø	d1	L	d2	d3	x
D22_1216	12	16	16	16	19	12
D22_1416	14	16	16	20	25	12
D22_1616	16	16	16	24	28	12
D22_1816	18	16	16	26	31	12
D22_2016	20	16	16	28	32	12
D22_2421	24	21	21	34	38	16
D22_2521	25	21	21	34	38	16
D22_3021	30	21	21	39	43	16

D22 B

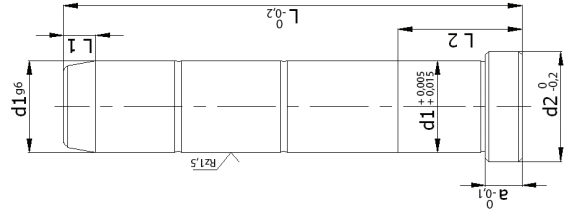
Bilyalı Burç Takım

Malzeme : Asil Çelik 1.3505 (100Cr6)
Sertlik : 62± 2 HRC
Isıl İşlem : Sertleştirme



Sipariş Kodu	Ø	d1	L1	Hmax	L2	L	f	d2	d3	d4	S2
D22B_1240	12	40	50	2.1	24	6	16	22	26	18	
56		56	82								
D22B_1845	18	45	44	3	34	11	24	30	35	23	
56		56	66								
71		71	96								
D22B_3056	30	56	32	4.8	54	21	38	46	52	33	
75		75	70								
95		95	110								

ŞK D01 Malzeme : Asil Çelik 1.1213 (Cf 53)
Sertlik : 62± 2 HRC
Kolon Isıl İşlem : İndüksiyon



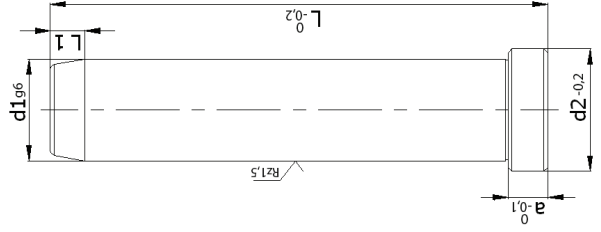
Sipariş Şekli: d1xL

Sipariş Kodu	Ø	d1	L	L1	L2	d2	a
D01_10040	10	40	4	17	12	3	
060		60					
080		80		22			
100		100		27			
120		120					
D01_12040	12	40	7	17	16	6	
060		60		22			
080		80		27			
100		100					
120		120		36			
140		140					
160		160					
D01_14060	14	60	7	17	18	8	
080		80		22			
100		100		27			
120		120		36			
140		140					
160		160					
180		180		46			
D01_16040	16	40	7	22	20	8	
060		60		27			
080		80					
100		100		36			
120		120					
140		140					
160		160		46			
180		180					
200		200		56			
D01_18060	18	60	7	27	22	8	
080		80					
100		100		36			
120		120					
140		140					
160		160		46			
180		180					
200		200		56			
240		240					
D01_20060	20	60	7	27	24	8	
080		80					
100		100		36			
120		120					
140		140					

Sipariş Kodu	Ø	d1	L	L1	L2	d2	a
D01_20160	20	160	160	7	46	24	8
180		180					
200		200			56		
240		240			76		
D01_22080	22	80	80	7	36	26	15
100		100					
120		120					
140		140					
160		160			46		
180		180			56		
200		200					
220		220					
240		240			66		
300		300					
D01_24080	24	80	80	7	36	28	15
100		100					
120		120					
140		140					
160		160			46		
180		180			56		
200		200					
220		220					
240		240			66		
300		300					
D01_25100	25	100	100	7	35	29	10
120		120					
140		140					
160		160					
180		180					
200		200					
220		220					
250		250					
D01_30100	30	100	100	7	36	36	15
120		120					
140		140					
160		160			46		
180		180			56		
200		200			66		
220		220					
240		240					
300		300			76		
360		360					
D01_40160	40	160	160	10	46	48	15
180		180			56		
200		200			66		
220		220					
240		240					
280		280					
300		300			76		
320		320					
360		360					
D01_50160	50	160	160	10	56	58	15
200		200					
240		240					
300		300			66		
360		360			76		

D01D
Kolon

Malzeme : Asil Çelik 1.1213 (Cf 53)
Sertlik : 62± 2 HRC
Isıl İşlem : İndüksiyon



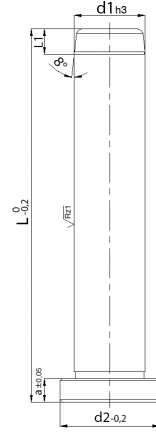
Sipariş Kodu	Ø	L	L1	d2	a
D01D_10040	10	40	4	12	3
060		60			
080		80			
100		100			
120		120			
D01D_12040	12	40	7	16	6
060		60			
080		80			
100		100			
120		120			
140		140			
160		160			
D01D_14060	14	60	7	18	8
080		80			
100		100			
120		120			
140		140			
160		160			
180		180			
D01D_16040	16	40	7	20	8
060		60			
080		80			
100		100			
120		120			
140		140			
160		160			
180		180			
200		200			
D01D_18060	18	60	7	22	8
080		80			
100		100			
120		120			
140		140			
160		160			
180		180			
200		200			
240		240			
D01D_20060	20	60	7	24	8
080		80			
100		100			
120		120			
140		140			

Sipariş Kodu	Ø	L	L1	d2	a
D01D_20160	20	160	7	24	8
180		180			
200		200			
240		240			
D01D_22080	22	80	7	26	15
100		100			
120		120			
140		140			
160		160			
180		180			
200		200			
220		220			
240		240			
300		300			
D01D_24080	24	80	7	28	15
100		100			
120		120			
140		140			
160		160			
180		180			
200		200			
220		220			
240		240			
300		300			
D01D_30100	30	100	7	36	15
120		120			
140		140			
160		160			
180		180			
200		200			
220		220			
240		240			
300		300			
360		360			
D01D_40160	40	160	10	48	15
180		180			
200		200			
220		220			
240		240			
280		280			
300		300			
320		320			
D01D_40360	40	360	10	48	15
D01D_50160	50	160	10	58	15
200		200			
240		240			
300		300			
360		360			

D08
Kolon

Malzeme : Asil Çelik 1.1213 (Cf 53)
Sertlik : 62± 2 HRC
Isıl İşlem : İndüksiyon

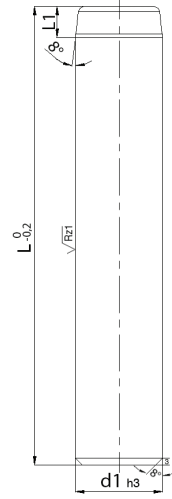
Sipari• Kodu	Ø	d1	L	L1	d2	a
D08_12080	12	12	80	4	16	4
100						
120						
D08_18120	18	18	120	7	22	6
140						
160						
D08_30160	30	30	160	7	36	6
200						
240						



D09
Kolon

Malzeme : Asil Çelik 1.1213 (Cf 53)
Sertlik : 62± 2 HRC
Isıl İşlem : İndüksiyon

Sipari• Kodu	Ø	d1	L	L1
D09_12100	12	12	100	6
125			125	
D09_18125	18	18	125	6
160			160	
D09_30160	30	30	160	7
240			240	

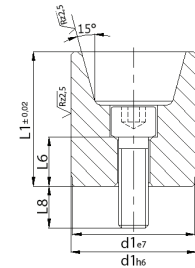
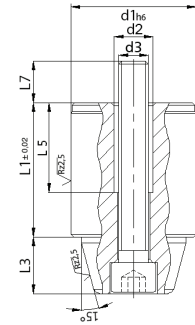


D50

Konik Kitleme

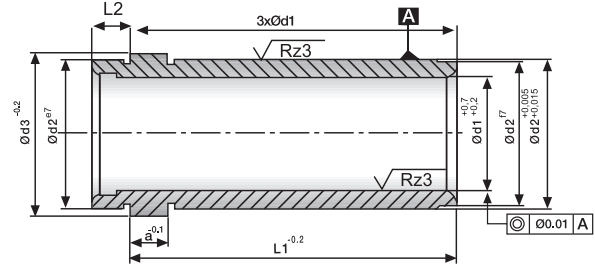
Malzeme : Asil Çelik 1.7131 (16MnCr5)
Sertlik : 62± 2 HRC
Isıl İşlem : Sementasyon

Sipari• Kodu	Ø	d1	L	L1	L3	L5	L6	L7	L8	d2	d3
D50_12	12	34	16	4.5	9.6	8.6	8	7.5	M4	M3	
D50_14	14	34	16	6	12.4	6	7.5	8	M5	M4	
D50_16	16	34	16	6	12.4	5.8	7.5	8	M5	M4	
D50_20	20	54	26	9	19.7	10.6	12	9.5	M8	M6	
D50_25	25	54	26	10	19.7	9.2	11	11	M8	M6	
D50_30	30	72	35	14	25	12.2	15	13	M10	M8	
D50_32	32	72	35	14	25	12.2	15	13	M10	M8	
D50_42	42	92	45	18	27	16.8	16	13	M10	M8	



Kuyruklu Şapkalı Burç / KŞB - Yerli Tip

Malzeme : Asil Çelik 1.7131 (16MnCr5)
Sertlik : 62± 2 HRC
Isil işlem : Sementasyon
DIN 16716 - C

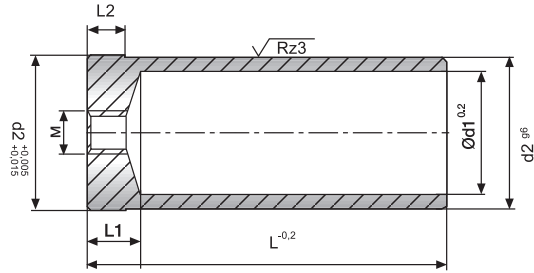


Sipariş Şekli : d1 x L1

d1	d2	d3	a	L2	L1										
					26	36	46	56	66	76	86	96	106	116	
16	24	28	6	10	✓	✓	✓	✓	✓	✓	✓				
20	28	32	6	10	✓	✓	✓	✓	✓	✓	✓	✓			
25	34	38	8	10	✓	✓	✓	✓	✓	✓	✓	✓	✓		
30	39	43	10	10		✓	✓	✓	✓	✓	✓	✓	✓	✓	✓

Tespit Burcu / TB - D 40 - Yerli Tip

Malzeme : Asil Çelik 1.7131 (16MnCr5)
Sertlik : 62± 2 HRC
Isil işlem : Sementasyon
DIN 16759



Sipariş Şekli: d1xL

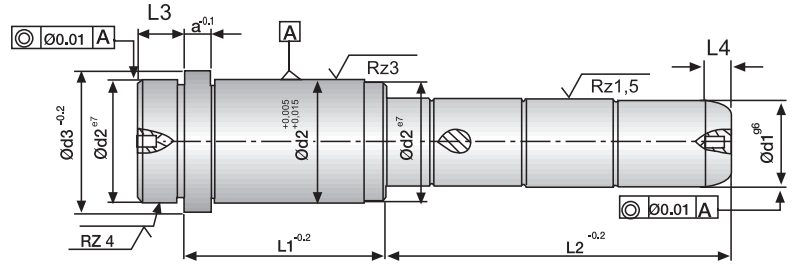
d2	d1	M	L1	L2	L					
					60	80	100	120	140	160
24	16	M8	15	5	✓	✓	✓	✓	✓	
28	20	M8	15	5	✓	✓	✓	✓	✓	
34	25	M10	15	5		✓	✓	✓	✓	✓
39	30	M10	15	5		✓	✓	✓	✓	✓

Kuyruklu Şapkalı Kademeli Kolon / KŞKK - Yerli Tip

Malzeme : Asil Çelik 1.1213 (Cf53)

Sertlik : 62± 2 HRC

Isıl İşlem : Islah + İndüksiyon

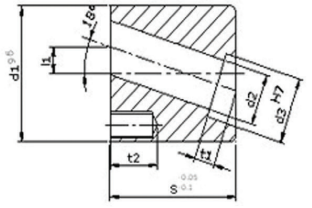
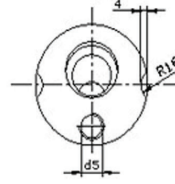


Sipariş Şekli: d1xL1xL2

d1	d2	d3	a	L3	L1	L2															
						26	36	46	56	66	76	86	96	106	116	126	136	146			
16	24	28	6	10	26	✓	✓	✓	✓	✓	✓		✓								
					36	✓	✓	✓	✓	✓		✓									
					46	✓	✓	✓	✓	✓	✓		✓		✓						
					56		✓	✓		✓		✓		✓		✓		✓		✓	
					66		✓		✓		✓		✓		✓		✓		✓		
					76			✓		✓		✓		✓		✓		✓		✓	
					86			✓		✓		✓		✓		✓		✓		✓	
20	28	32	6	10	26	✓	✓	✓	✓	✓	✓		✓								
					36	✓	✓	✓	✓	✓		✓		✓		✓					
					46	✓	✓	✓	✓		✓		✓		✓		✓				
					56	✓	✓	✓		✓		✓		✓		✓		✓			
					66		✓		✓		✓		✓		✓		✓		✓		
					76			✓		✓		✓		✓		✓		✓		✓	
					86				✓		✓		✓		✓		✓		✓		✓
					96			✓		✓		✓		✓		✓		✓		✓	
25	34	38	8	10	26			✓	✓	✓											
					36		✓	✓	✓	✓		✓		✓		✓		✓		✓	
					46		✓	✓	✓		✓		✓		✓		✓		✓		✓
					56		✓	✓		✓		✓		✓		✓		✓		✓	
					66		✓		✓		✓		✓		✓		✓		✓		✓
					76			✓		✓		✓		✓		✓		✓		✓	
					86				✓		✓		✓		✓		✓		✓		✓
					96				✓		✓		✓		✓		✓		✓		✓
					106					✓		✓		✓		✓		✓		✓	
30	39	43	10	10	36		✓	✓	✓	✓		✓		✓							
					46		✓	✓	✓		✓		✓		✓						
					56		✓	✓		✓		✓		✓		✓					
					66		✓		✓		✓		✓		✓		✓		✓		
					76			✓		✓		✓		✓		✓		✓		✓	
					86				✓		✓		✓		✓		✓		✓		✓
					96			✓		✓		✓		✓		✓		✓		✓	
					106				✓		✓		✓		✓		✓		✓		✓
116					✓		✓		✓		✓		✓		✓						

Boynuz Pimi Yatağı

Malzeme : Asil Çelik 1.7131 (16MnCr5)
Sertlik : 62± 2 HRC
Isıl işlem : Sementasyon
DIN 16716 - C

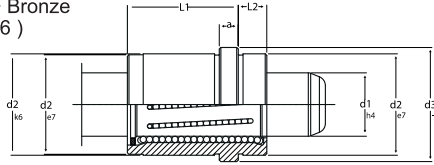


d1	S	d2	d3	d5	L1	L3	T1	T2
32	36	12	16	M6	7	10	10	12
36	36	14	18	M8	7	12	10	16
40	46	16	20	M8	8.5	13.5	10	16
40	46	18	22	M8	8.5	13.5	10	16
45	46	20	25	M8	8.5	15	10	16
50	56	25	29	M8	10	16	12	16
63	66	30	34	M10	12	21	15	20

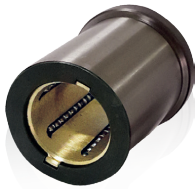
Linear Burç



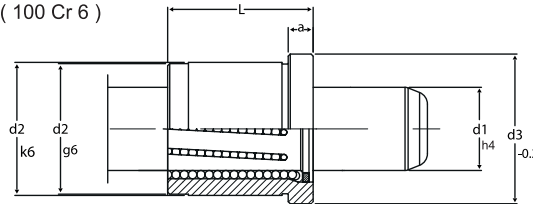
Malzeme :
Asil Çelik 1.3505 (100 Cr 6) + Bronze
Misket (Ball) 1.3505 (100 Cr 6)
Sertlik :
62 ± 2 HRC
Isıl işlem :
Sertleştirme



d1	d2	d3	L1	a	L2
12	22	26	20	6	8
18	30	35	24	6	9
20	32	36	26	6	9
* 20	32	36	35	6	9
30	46	52	34	6	12



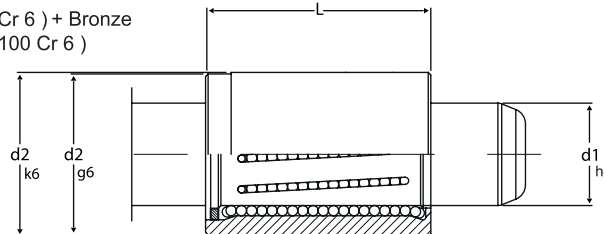
Malzeme :
Asil Çelik 1.3505 (100 Cr 6) + Bronze
Misket (Ball) 1.3505 (100 Cr 6)
Sertlik :
62 ± 2 HRC
Isıl işlem :
Sertleştirme



d1	d2	d3	L	a
* 20	32	36	35	6
* 25	40	45	35	6
* 40	60	64	45	8
* 40	60	64	63	8



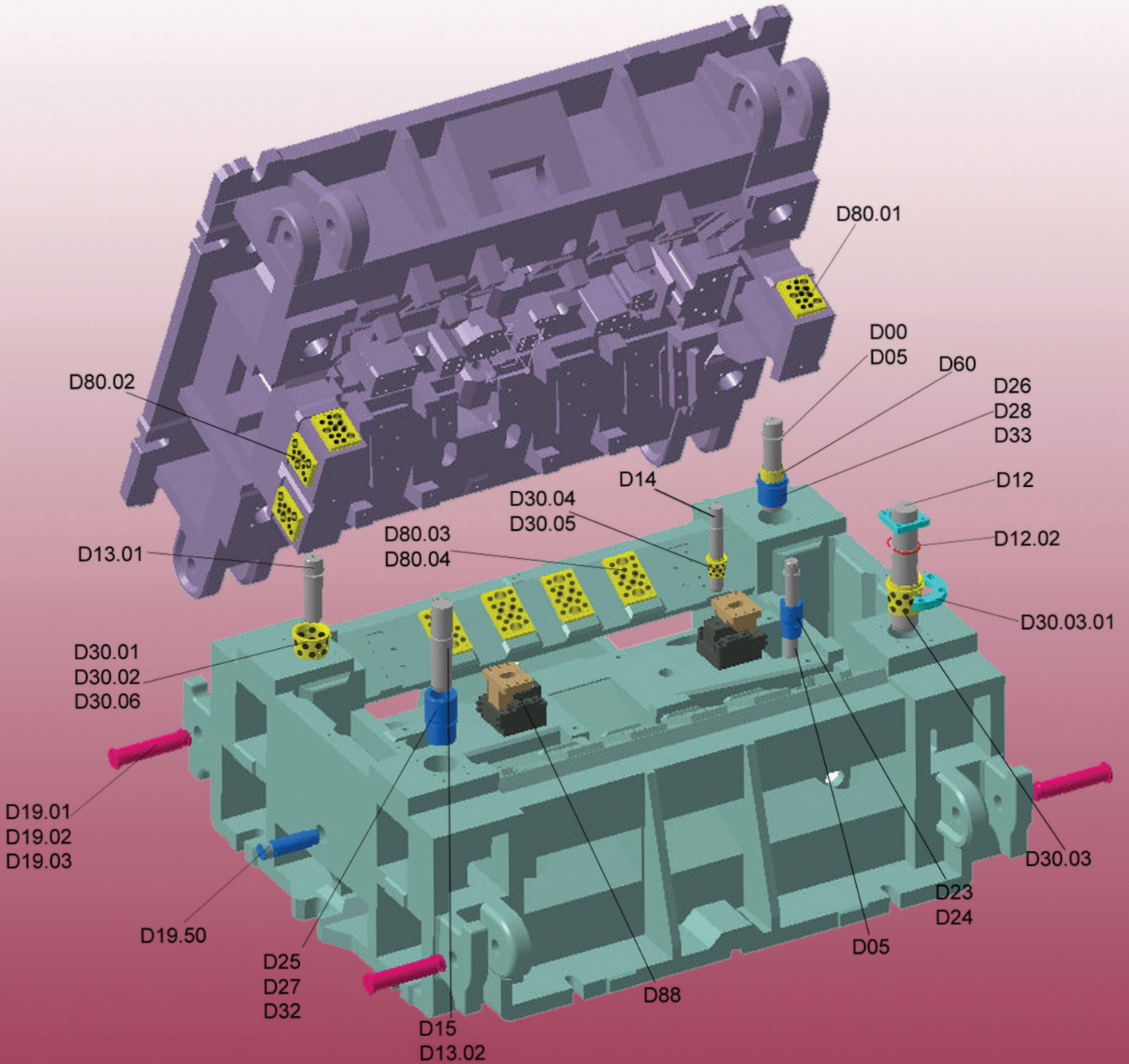
Malzeme :
Asil Çelik 1.3505 (100 Cr 6) + Bronze
Misket (Ball) 1.3505 (100 Cr 6)
Sertlik :
62 ± 2 HRC
Isıl işlem :
Sertleştirme



d1	d2	L
* 20	32	35
* 20	32	45
* 25	40	45
* 25	40	55

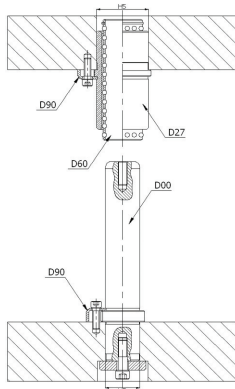
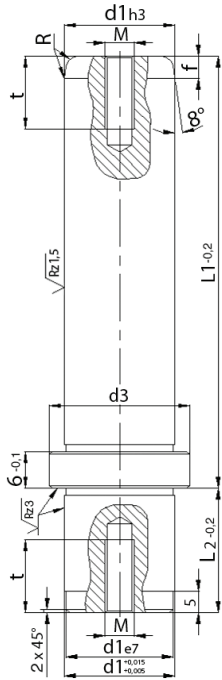
*Siparişe göre özel olarak üretilir.

SAÇ KALIBI ÜRÜNLERİ



D00 Malzeme : Asil Çelik 1.1213 (Cf 53)
Kolon Sertlik : 62± 2 HRC
Isıl İşlem : İndüksiyon (Induction)

OŞK

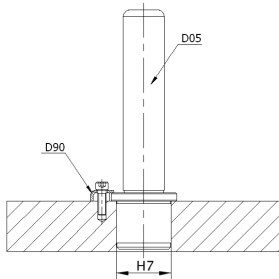
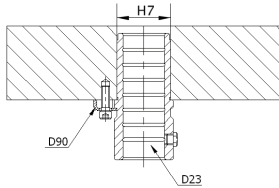
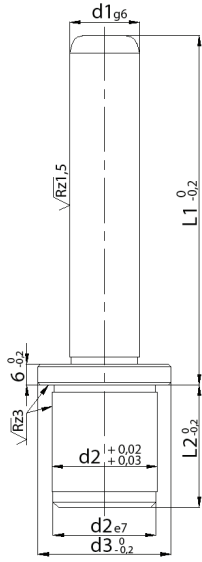


Sipariş Kodu	d1	Sipariş Kodu	d1	L1	L2	d3	t	f	R	M
D00_1510020	15	D00_1610020	16	100	20	22	20	4	3	6
11220		11220		112						
12520		12520		125						
14020		14020		140						
16020		16020		160						
18020		18020		180						
20020		20020		200						
D00_1910023	19	D00_2010023	20	100	23	25	20	4	3	8
11223		11223		112						
12523		12523		125						
14023		14023		140						
16023		16023		160						
18023		18023		180						
20023		20023		200						
D00_2410030	24	D00_2510030	25	100	30	32	20	6	5	8
11230		11230		112						
12530		12530		125						
14030		14030		140						
16030		16030		160						
18030		18030		180						
20030		20030		200						
22430		22430		224						
25030		25030		250						
D00_3011237	30	D00_3211237	32	112	37	40	20	6	5	8
12537		12537		125						
14037		14037		140						
16037		16037		160						
18037		18037		180						
20037		20037		200						
22437		22437		224						
25037		25037		250						
28037		28037		280						
31537		31537		315						
D00_3812537	38	D00_4012537	40	125	37	50	20	6	5	8
14037		14037		140						
16037		16037		160						
18037		18037		180						
20037		20037		200						
22437		22437		224						
25037		25037		250						
28037		28037		280						
31537		31537		315						
D00_3835537	38	D00_4035537	40	355	37	50	20	6	5	8
D00_4814047	48	D00_5014047	50	140	47	63	20	8	5	8
16047		16047		160						
18047		18047		180						
20047		20047		200						
22447		22447		224						
25047		25047		250						
28047		28047		280						
31547		31547		315						
35547		35547		355						
40047		40047		400						
D00_6016047	60	D00_6316047	63	160	47	80	20	8	5	8
18047		18047		180						
20047		20047		200						
22447		22447		224						
25047		25047		250						
28047		28047		280						
31547		31547		315						
35547		35547		355						
40047		40047		400						
		D00_8020060	80	200	60	95	20	8	5	12
		22460		224						
		25060		250						
		28060		280						
		31560		315						
		35560		355						
		40060		400						

D05
Kolon

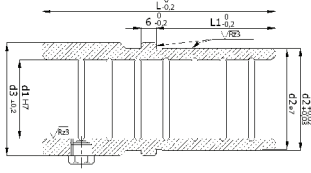
Malzeme : Asil Çelik 1.1213 (Cf 53)
Sertlik : 62± 2 HRC
Isıl İşlem : İndüksiyon (Induction)

AKK

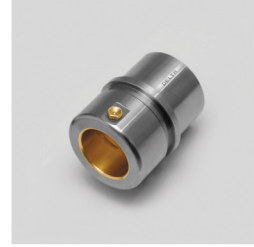
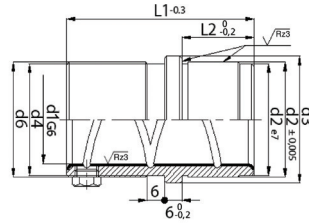


Sipariş Kodu	Ø d1	L1	L2	d2	d3
D05_2010025	20	100	25	28	34
35			35		
D05_2012525		125	25		
35			35		
D05_2014025		140	25		
35			35		
D05_2016025		160	25		
35			35		
D05_2018025		180	25		
35			35		
D05_2510025	25	100	25	34	39
35			35		
D05_2512525		125	25		
35			35		
D05_2514025		140	25		
35			35		
D05_2516025		160	25		
35			35		
D05_2518025		180	25		
35			35		
D05_2520025	200	25			
35		35			
D05_2522025	220	25			
35		35			
D05_2524025	240	25			
35		35			
D05_3012535	30	125	35	39	44
45			45		
D05_3014035		140	35		
45			45		
D05_3016035		160	35		
45			45		
D05_3018035		180	35		
45			45		
D05_3020035		200	35		
45			45		
D05_3022035	220	35			
45		45			
D05_3024035	240	35			
45		45			
D05_3026035	260	35			
45		45			
D05_3028035	30	280	35	39	44
45			45		
D05_3031535		315	35		
45		45			

D23 Malzeme : Asil Çelik 1.7131 (16MnCr5)
Sertlik : 62± 2 HRC
Burç : Isıl İşlem : Sementasyon



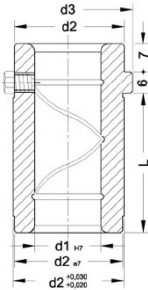
D25 Malzeme : Asil Çelik 1.1186 (CK40) + Bronze
Sertlik : 52± 2 HRC
Burç : Bronzlu Isıl İşlem : İndüksiyon



Sipariş Kodu	Ø	d1	L	L1	d2	d3
D23_2007026	20	20	70	26	28	34
36				36		
D23_2508026	25	25	80	26	34	39
36				36		
D23_3009036	30	30	90	36	39	44
46				46		
D23_4010036	40	40	100	36	50	54
10836			108	36	58	65
10046			100	46	50	54
D23_5012046	50	50	120	46	60	64
56				56		
12756			127	56	70	75
D23_6313056	63	63	130	56	80	87
15056			150	56	85	95
D23_8015060	80	80	150	60	105	115

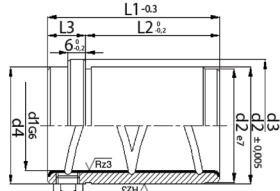
Sipariş Kodu	Ø	d1	L1	L2	d2	d3	d4	d6
D25_1904323	19	19	43	23	32	40	32	39
05923			59					
05933				33				
D25_2004323	20	20	43	23	32	40	32	39
05923			59					
05933				33				
D25_2405923	24	24	59	23	40	48	40	46
07923			79					
07933				33				
D25_2505923	25	25	59	23	40	48	40	46
07923			79					
07933				33				
D25_3007530	30	30	75	30	48	55	48	53
09330			93					
09340				40				
D25_3207530	32	32	75	30	48	55	48	53
09330			93					
09340				40				
D25_3808237	38	38	82	37	58	65	58	63
10837			108					
10847				47				
D25_4008237	40	40	82	37	58	65	58	63
10837			108					
10847				47				
D25_4809747	48	48	97	47	70	80	70	77
12747			127					
12757				57				
D25_5009747	50	50	97	47	70	80	70	77
12747			127					
12757				57				
D25_6011660	60	60	116	60	85	95	85	92
15060			150					
D25_6311660	63	63	116	60	85	95	85	92
15060			150					
D25_8012060	80	80	120	60	105	118	105	115
15060			150					

D24 Malzeme : Asil Çelik 1.7131 (16MnCr5)
Sertlik : 62± 2 HRC
Burç : Isıl İşlem : Sementasyon

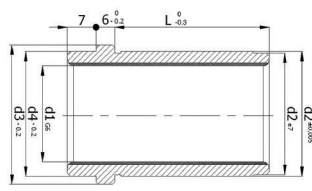


Sipariş Kodu	Ø	d1	d2	L	d3
D24_2002826	20	20	28	26	34
D24_2503426	25	25	34	26	39
D24_3003926	30	30	39	26	44
36				36	
D24_4005036	40	40	50	36	54
46				46	
05846			58		65
D24_5006046	50	50	60	46	64
07046			70		75
D24_6308546	63	63	85	46	95
56				56	
D24_8010560	80	80	105	60	115

D26 Malzeme : Asil Çelik 1.1186 (CK40) + Bronze
Bronzlu Sertlik : 52± 2 HRC
Burç Isıl İşlem : İndüksiyon



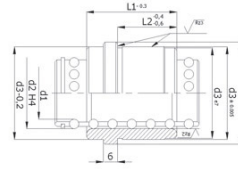
D33 Malzeme : 1.1191 (Ck45) + Sinter
Sinterli Sertlik : 52± 2 HRC
Burç Isıl İşlem : İndüksiyon



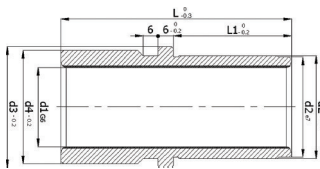
Sipariş Kodu	Ø	d1	L1	L2	d2	d3	d4	L3
D26_193523	19	35	23	32	40	32	12	
4533		45	33					
D26_203523	20	35	23	32	40	32	12	
4533		45	33					
D26_243523	24	35	23	40	48	40	12	
4533		45	33					
D26_253523	25	35	23	40	48	40	12	
4533		45	33					
D26_304230	30	42	30	48	55	48	12	
5240		52	40					
D26_324230	32	42	30	48	55	48	12	
5240		52	40					
D26_385237	38	52	37	58	65	58	15	
6247		62	47					
D26_405237	40	52	37	58	65	58	15	
6247		62	47					
D26_486547	48	65	47	70	80	70	18	
7557		75	57					
D26_506547	50	65	47	70	80	70	18	
7557		75	57					
D26_608060	60	80	60	85	95	85	20	
D26_638060	63	80	60	85	95	85	20	
D26_808060	80	80	60	105	118	105	20	

Sipariş Kodu	Ø	d1	d2	L	d3	d4
D33_2003226	20	32	26	26	40	32
36			36			
D33_2504026	25	40	26	26	47	40
36			36			
D33_3004826	30	48	26	26	54	48
36			36			
D33_4005836	40	58	36	36	64	58
46			46			
D33_5007046	50	70	46	46	78	70
D33_6308556	63	85	56	56	93	85
D33_8010560	80	105	60	60	118	105

D28 Malzeme : Asil Çelik 1.3505 (100Cr6)
Sertlik : 62± 2 HRC
Burç Isıl İşlem : Sertleştirme



D32 Malzeme : 1.1191 (Ck45) + Sinter
Sinterli Sertlik : 52± 2 HRC
Burç Isıl İşlem : İndüksiyon

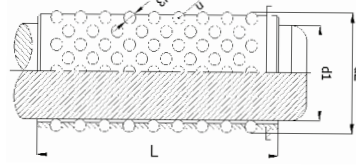
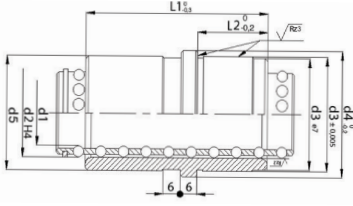


Sipariş Kodu	Ø	d1	L	L1	d2	d3	d4
D32_2007026	20	70	26	32	40	38	
36			36				
D32_2508026	25	80	26	40	47	45	
36			36				
D32_3009036	30	90	36	48	54	52	
46			46				
D32_4010036	40	100	36	58	64	62	
46			46				
D32_5012046	50	120	46	70	78	76	
56			56				
D32_6315056	63	150	56	85	93	91	
D32_8015060	80	150	60	105	118	115	

Sipariş Kodu	Ø	d1	L1	L2	d2	d3	d4
D28_153523	15	35	23	21	30	34	
4533		45	33				
D28_163523	16	35	23	22	30	34	
4533		45	33				
D28_193523	19	35	23	25	32	40	
4533		45	33				
D28_203523	20	35	23	26	32	40	
4533		45	33				
D28_243523	24	35	23	30	40	48	
4533		45	33				
D28_253523	25	35	23	31	40	48	
4533		45	33				
D28_304230	30	42	30	38	48	55	
5240		52	40				
D28_324230	32	42	30	40	48	55	
5240		52	40				
D28_385237	38	52	37	46	58	65	
6247		62	47				
D28_405237	40	52	37	48	58	65	
6247		62	47				
D28_486547	48	65	47	56	70	80	
7557		75	57				
D28_506547	50	65	47	58	70	80	
7557		75	57				
D28_608060	60	80	60	68	85	95	
D28_638060	63	80	60	71	85	95	

D27 Malzeme : Asil Çelik 1.3505 (100Cr6)
Sertlik : 62± 2 HRC
Burç Isıl İşlem : Sertleştirme

D60 Malzeme : Ms58
Bilyalı Kafes Bilya Malzemesi : 100Cr6 (1.3505)

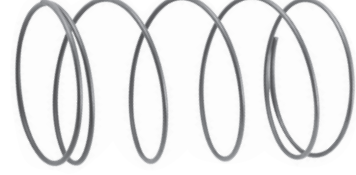
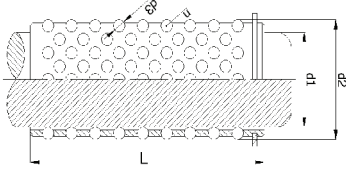


Sipariş Kodu	Ø	d1	L1	L2	d2	d3	d4	d5
D27_1504323	15	43	23		21	30	34	32
05923		59						
05933			33					
D27_1604323	16	43	23		22	30	34	32
05923		59						
05933			33					
D27_1904323	19	43	23		25	32	40	39
05923		59						
05933			33					
D27_2004323	20	43	23		26	32	40	39
05923		59						
05933			33					
D27_2405923	24	59	23		30	40	48	46
07923		79						
07933			33					
D27_2505923	25	59	23		31	40	48	46
07923		79						
07933			33					
D27_3007530	30	75	30		38	48	55	53
09330		93						
09340			40					
D27_3207530	32	75	30		40	48	55	53
09330		93						
09340			40					
D27_3808237	38	82	37		46	58	65	63
10837		108						
10847			47					
D27_4008237	40	82	37		48	58	65	63
10837		108						
10847			47					
D27_4809747	48	97	47		56	70	80	77
12747		127						
12757			57					
D27_5009747	50	97	47		58	70	80	77
12747		127						
12757			57					
D27_6011660	60	116	60		68	85	95	92
15060		150						
D27_6311660	63	116	60		71	85	95	92
15060		150						

Sipariş Kodu	Ø	d1	L	d2	d3	n
D60_12040	12	40	16	2		176
056		56				272
D60_15045	15	45	21	3		140
056		56				196
071		71				238
D60_16045	16	45	22	3		140
056		56				196
071		71				238
D60_18045	18	45	24	3		176
056		56				240
071		71				272
D60_19045	19	45	25	3		180
056		56				234
071		71				306
080		80				342
095		95				414
D60_20045	20	45	26	3		180
056		56				234
071		71				306
080		80				342
095		95				414
D60_24045	24	45	30	3		180
056		56				240
071		71				280
080		80				320
095		95				440
105		105				480
120		120				560
D60_25045	25	45	31	3		180
056		56				240
071		71				280
080		80				320
095		95				440
105		105				480
120		120				560
D60_30045	30	45	38	4		140
056		56				180
075		75				240
080		80				280
095		95				340
105		105				380
120		120				420
140		140				500

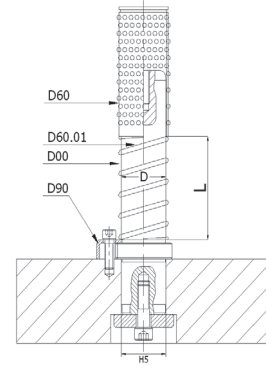
D60 Malzeme : Ms58
Bilyalı Kafes Bilya Malzemesi : 100Cr6 (1.3505)

D60.01 Malzeme : Yay Çeliği
Bilyalı Kafes Tucu



Sipariş Kodu	Ø	L	d2	d3	n
D60_32045	32	45	40	4	140
056		56			180
075		75			240
080		80			280
095		95			340
105		105			380
120		120			420
140		140			500
D60_38056	38	56	46	4	216
071		71			288
080		80			336
095		95			408
105		105			456
120		120			528
140		140			624
160		160			720
D60_40056	40	56	48	4	216
071		71			288
080		80			336
095		95			408
105		105			456
120		120			528
140		140			624
160		160			720
D60_48071	48	71	56	4	360
080		80			390
095		95			480
105		105			540
120		120			600
140		140			720
160		160			840
D60_50071	50	71	58	4	360
080		80			390
095		95			480
105		105			540
120		120			600
140		140			720
160		160			840
D60_60085	60	85	68	4	504
95		95			558
105		105			612
120		120			720
140		140			828
160		160			972
D60_63085	63	85	71	4	504
95		95			558
105		105			612
120		120			720
140		140			828
160		160			972

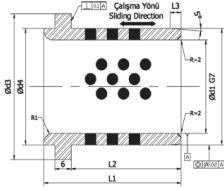
ØD	L	Not / Note
19	40-140	L 10 mm. aralıklarla
20	40-140	
24	40-180	
25	40-180	
30	50-230	
32	50-230	
38	60-230	
40	60-230	
48	70-280	
50	70-280	
60	80-250	
63	80-250	



Sipariş Kodu Örneği

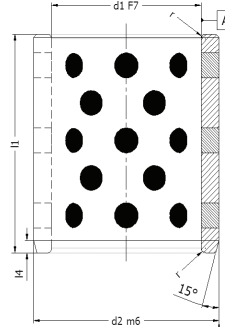
Spiral Yay = D60.01_19
Ø Kolon = 40
Yay Boy = 140
Sipariş Kodu = D60.01_1940

D30.01 Malzeme : SAE 430B
Grafitli Burç Sertlik : HB≥180



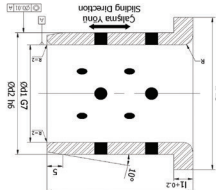
Sipariş Kodu	FORD WDX1370	NAAMS G61	OPEL U2802-99(A)	d1	L1	d2	d3	d4	L2	L3	R1
D30.01_020040				20	40	28	34	28	30	4	3
025040	11025	2540	F33020019	25	40	32	40	32	30	4	3
030050				30	50	40	50	40	40	4	3
032050	11032	3250	F33020020	32	50	40	50	40	40	4	3
040063	11040	4063	F33020021	40	63	50	63	50	50	5	3
050071	11050	5071	F33020022	50	71	63	71	63	56	6	5
063080	11063	6300	F33020023	63	80	80	90	80	63	8	6
080100	11080	8010	F33020024	80	100	100	112	100	80	10	8
100125	11100	1012	F33020025	100	125	125	140	125	106	12	10
125160	11125	1216	F33020026	125	160	160	180	160	132	12	12

D30.04 Malzeme : SAE 430B
Grafitli Burç Sertlik : HB≥180



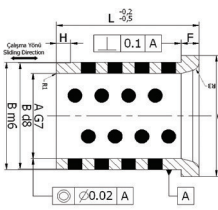
Sipariş Kodu	d1	l1	d2	l4	r
D30.04_20015028	20	15	28	4	0.75
016028		16	28		
016030		16	30		
020028		20	28		
020030		20	30		
025028		25	28		
025030		25	30		
030028		30	28		
030030		30	30		
035028		35	28		
035030		35	30		
037028		37	28		
040026		40	26		
040028		40	28		
040030		40	30		
050028		50	28		
D30.04_25016033	25	16	33	4	0.75
016035		16	35		
020033		20	33		
020035		20	35		
025033		25	33		
025035		25	35		
030033		30	33		
030035		30	35		
035033		35	33		
035035		35	35		
040033		40	33		
040035		40	35		
047033		47	33		
050032		50	32		
050033		50	33		
050035		50	35		
060033		60	33		
D30.04_30020038	30	20	38	4	0.75
020040		20	40		
025038		25	38		
025040		25	40		
030038		30	38		
030040		30	40		
035038		35	38		
035040		35	40		
040038		40	38		

D30.02 Malzeme : SAE 430B
Grafitli Burç Sertlik : HB≥180



Sipariş Kodu	FORD WDX1370	FORD WSA 003	d1	L	d2	d3	l1	R
D30.02_020035	05020	11020	20	35	28	36	8	2
025040			25	40	32	40	8	6
030055			30	55	40	50	8	6
032055	05032		32	55	40	50	8	6
040070	05040		40	70	50	60	8	6
042070	05042	11042	42	70	50	60	8	6
050075	05050		50	75	63	75	12	8
052075	05052	11052	52	75	63	75	12	8
063080	05063		63	80	80	90	12	8
080100	05080		80	100	100	110	12	8
100125	05100		100	125	125	135	12	8

D30.03 Malzeme : SAE 430B
Grafitli Burç Sertlik : HB≥180

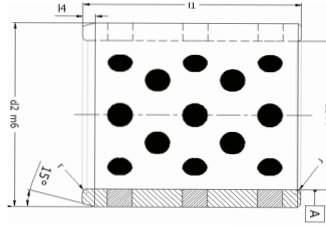


Sipariş Kodu	PSA MABEC CODE	RENAULT MABEC CODE	A	L	B	C	F	H
D30.03_025040			25	40	35	40	5	5
032050			32	50	44	50	6	5
040063	X345 274 670	M764 539 401	40	63	52	60	8	8
050080	X345 281 970	M764 544 501	50	80	63	71	10	8
063100	X345 287 270	M764 549 501	63	100	80	90	12	10
080125	X345 292 370	M764 554 601	80	125	100	112	16	10
100160		X345 298 500	100	160	125	140	20	10

Not:

Toleranssız ölçüler EN-22768 -1 standardına göre üretilir.
Belirtilmeyen köşeler R=0,5

D30.04 Malzeme : SAE 430B
Grafitli Burç Sertlik : HB≥180



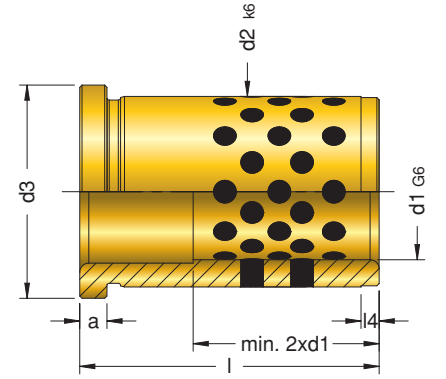
Sipariş Kodu	Ø	d1	l1	d2	l4	r
D30.04_30040040	30	40	40	40	4	0.75
050038			50	38		
050040			50	40		
060038			60	38		
060040			60	40		
060042			60	42		
D30.04_35020045	35	20	45	45	4	0.75
025044			25	44		
025045			25	45		
030044			30	44		
030045			30	45		
035044			35	44		
035045			35	45		
040044			40	44		
040045			40	45		
050044			50	44		
050045			50	45		
060044			60	44		
060045	60	45				
D30.04_40020050	40	20	50	50	4	1.5
025050			25	50		
025055			25	55		
030050			30	50		
030055			30	55		
035050			35	50		
035055			35	55		
040050			40	50		
040055			40	55		
050050			50	50		
050055			50	55		
060050			60	50		
060055			60	55		
070050			70	50		
077050	77	50				
080050	80	50				
D30.04_50030060	50	30	60	60	4	1.5
030062			30	62		
030065			30	65		
035060			35	60		
035062			35	62		
040060			40	60		
040062	40	62				

Sipariş Kodu	Ø	d1	l1	d2	l4	r
D30.04_50040065	50	40	65	65	4	1.5
050060			50	60		
050062			50	62		
050065			50	65		
060060			60	60		
060062			60	62		
060065			60	65		
070060			70	60		
070062			70	62		
070065			70	65		
080060			80	60		
080065			80	65		
095060			95	60		
100065			100	65		
D30.04_63030074	63	30	74	74	4	2
030075			30	75		
035074			35	74		
035075			35	75		
040074			40	74		
040075			40	75		
050074			50	74		
050075			50	75		
060074			60	74		
060075			60	75		
070074			70	74		
070075			70	75		
080074			80	74		
080075			80	75		
100075	100	75				

D30.05 Malzeme : SAE 430B
Grafitli Burç Sertlik : HB≥180



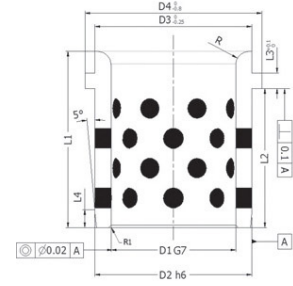
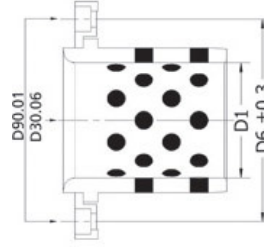
Sipari• Kodu	d1	l1	d2	d3	r	l3	l4
D30.05_20017	20	17	26	31	2	6	2
022		22					
027		27					
036		36					
046		46					
056		56					
066		66					
076		76					
D30.05_25046	25	46	32	38	3	6	3
056		56					
066		66					
076		76					
086		86					
D30.05_30027	30	27	42	47	3	6	4
036		36					
046		46					
056		56					
066		66					
076		76					
086		86					
096		96					
116		116					
D30.05_40046	40	46	54	60	3	10	5
056		56					
066		66					
076		76					
086		86					
096		96					
116		116					
136		136					
156		156					
D30.05_50076	50	76	66	72	3	10	5
086		86					
096		96					
116		116					
136		136					
156		156					
196		196					
D30.05_60096	60	96	80	86	3	20	5
116		116					
136		136					
156		156					
196		196					



D30.06

Grafitli Burç / Oilless Guide Bush

Malzeme - Material : SAE 430B / Grafit Sertlik -
Hardness : HB \geq 180

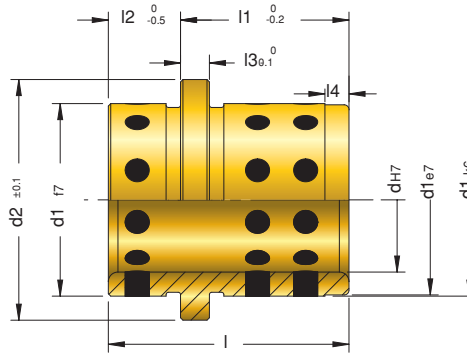


Sipariş Kodu	BMW CODE B2 2933 1	PSA MABEC CODE	Ø D1	L1	D2	D3	D4	D6	L2	L3	L4	R
D30.06_025040	2168699		25	40	32	32	40	58	30	6.3	3	3
032050	2168700		32	50	40	40	50	66	40	6.3	4	3
040063	2168701		40	63	50	50	63	79	50	6.3	5	3
050071	2168702		50	71	63	63	71	89	56	6.3	6.3	5
063080	2168703		63	80	80	80	90	123	63	10	8	6
080100	2168704		80	100	100	100	112	143	80	10	10	8
100125	2168705	Z000499644	100	125	125	125	140	168	106	10	12.5	10
125160	2168706	Z000499646	125	160	160	160	180	203	132	10	16	12
160200	2168707		160	200	200	200	220	243	170	10	16	18

D30.07

Grafitli Burç / Oilless Guide Bush

Malzeme - Material : SAE 430B / Grafit Sertlik -
Hardness : HB \geq 180

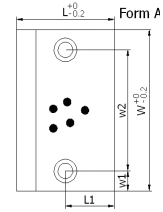
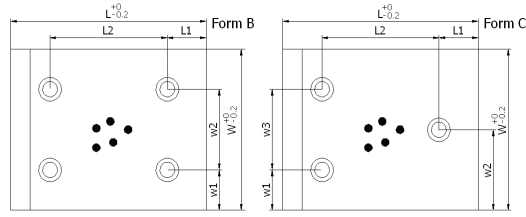
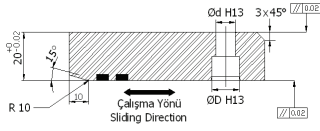


d1	d2	l	l2	l3	l4	d	l1	Sip. Kodu/Or. Code
20	25	26	9	6	2	14	17	D30.07_1417
20	25	26	9	6	2	16	17	D30.07_1617
30	35	49	22	6	4	22	27	D30.07_2227
30	35	49	22	6	2	25	27	D30.07_2527
42	47	63	27	6	2	30	36	D30.07_3036
50	60	63	27	8	8	40	36	D30.07_4036
63	72	92	37	8	8	50	55	D30.07_5055

D80.02 Grafitli Sürtünme Plakası

Malzeme : SAE 430B

Sertlik : HB≥180



Sipariş Kodu	VW/AUDI 39D863	FORD WDX 13-70	OPEL 3425	W	L	w1	w2	w3	L1	L2	ØD	Ød	t	Form
D80.02_080050	21			80	50	25	30		25		15	9	9	A
D80.02_100050	31	02100050-Y	F33 04 0008	100	50	25	50		25		20	13.5	13	A
	080	32	F33 04 0009	100	80				40					
D80.02_125050	41			125	50	25	75		25		20	13.5	13	A
	080	42	F33 04 0014	125	80				40					
	100	43	02125100-Y	125	100				50					C
	125	44	F33 04 0016	125	125				75					
	160	45	02125160-Y	125	160				110					
	200	46	02125200-Y	125	200				150					
	250		02125250-Y	125	250				40	170				
	315		02125315-Y	125	315				235					
D80.02_160050	51			160	50	25	110		25		20	13.5	13	A
	080	52		160	80				40					
	100	53	02160100-Y	160	100				50					C
	125	54	F33 04 0019	160	125				75					
	160	55	02160160-Y	160	160				110					
	200	56	02160200-Y	160	200				150					
	250		02160250-Y	160	250				40	170				B
	315		02160315-Y	160	315				235					



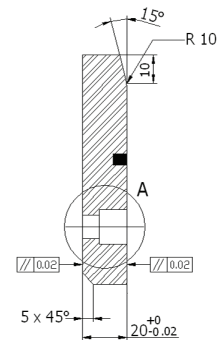
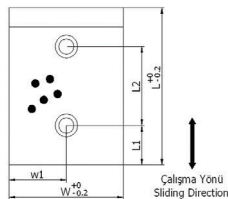
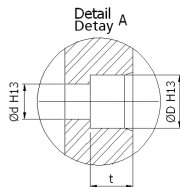
D80.01

Grafitli Sürtünme Plakası

Malzeme : SAE 430B

Sertlik : HB≥180

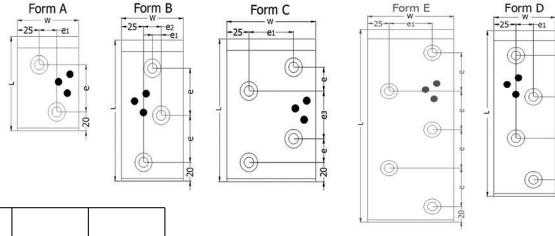
Sipariş Kodu	VW/AUDI 39D863	FORD WDX 13-70	OPEL 3425	W	L	w1	L1	L2	ØD	Ød	t
D80.01_050080	12			50	80	25	25	30	15	9	9
	100	13	02050100-Y		100			50	20	13.5	13
	125	14	F33 04 0001		125			75			
	160	15	02050160-Y		160			110			
	200	16	02050200-Y		200			150			
D80.01_080080	22			80	80	40	25	30	20	13.5	13
	100	23	02080100-Y		100			50			
	125	24	F33 04 0005		125			75			
	160	25	02080160-Y		160			110			
	200	26	02080200-Y		200			150			
	250		02080250-Y		250		40	170			
	315		02080315-Y		315			235			
D80.01_100100	33	02100100-Y	F33 04 0010	100	100	50	25	50	20	13.5	13
	125	34	02100125-Y		125			75			
	160	35	02100160-Y		160			110			
	200	36	02100200-Y		200			150			
	250		02100250-Y		250		40	170			
	315		02100315-Y		315			235			



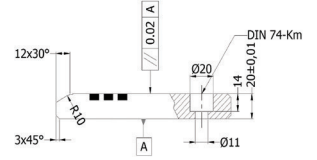
D80.03

Grafitli Sürtünme Plakası

Malzeme : SAE 430B
Sertlik : HB≥180



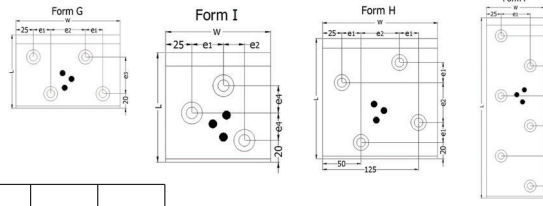
Sipariş Kodu	PSA Mabec Code	RENAULT Mabec Code	W	L	e	e1	e2	e3	Form	
D80.03_070100	Z000 166 214	R100 092 843	70	100	50	20	20		A	
150	Z000 166 216	R100 092 844		150					10	B
200	Z000 166 221	R100 092 845		200					20	D
D80.03_100150	Z000 166 217	R100 092 883	100	150	25	50	50	50	C	
200	Z000 166 222	R100 092 884		200					50	D
250	Z000 166 225	R100 092 885		250					50	E
D80.03_150200	Z000 166 223	R100 092 890	150	200	50	100			D	
250	Z000 166 226	R100 092 893		250					100	E



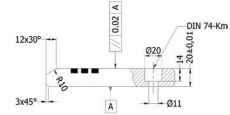
D80.03

Grafitli Sürtünme Plakası

Malzeme : SAE 430B
Sertlik : HB≥180



Sipariş Kodu	PSA Mabec Code	RENAULT Mabec Code	W	L	e	e1	e2	e3	e4	Form	
D80.03_100100	Z000 166 215	R100 092 846	100	100	30	20			25	I	
300	Z000 166 227	R100 092 886		300						50	F
D80.03_150100	Z000 166 218	R100 092 887	150	100	25	50	50	50		G	
150	Z000 166 219	R100 092 888		150						25	H
300	Z000 166 228	R100 092 894		300						50	F
D80.03_200100	Z000 166 224	R100 092 895	200	100	50	50	50			G	

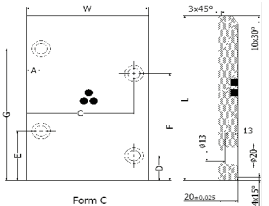
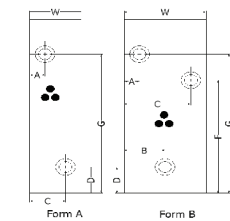


D80.04

Grafitli Sürtünme Plakası

Malzeme : SAE 430B
Sertlik : HB≥180

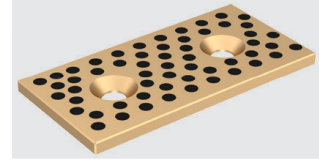
Sipariş Kodu	FORD CODE WDX1362	W	L	A	B	C	D	E	F	G	Form	
D80.04_050100	02050100-Y	50	100	25		25	30			60	A	
150	02050150-Y		150				30			100	A	
200	02050200-Y		200				40			160	A	
D80.04_080100	02080100-Y	80	100	20		60	30			60	A	
150	02080150-Y		150				30			110	A	
200	02080200-Y		200				40			160	A	
250	02080250-Y		250				40			210	A	
315	02080315-Y		315				40			275	B	
										250	210	B
D80.04_100100	02100100-Y	100	100	22		78	30			60	A	
150	02100150-Y		150				30			110	A	
200	02100200-Y		200				50			135	B	
250	02100250-Y		250				50			185	B	
315	02100315-Y		315				50			250	B	
D80.04_125100	02125100-Y	125	100	25		100	30			60	A	
150	02125150-Y		150				30			110	A	
200	02125200-Y		200				62			135	B	
250	02125250-Y		250				62			185	B	
315	02125315-Y		315				40			65	250	C
D80.04_160100	02160100-Y	160	100	30		130	30			60	A	
150	02160150-Y		150				30			110	A	
200	02160200-Y		200				80			135	B	
250	02160250-Y		250				40			65	185	C
315	02160315-Y		315				40			65	250	C



D81.01

Grafitli Sürtünme Plakası / Wear Plate With Graphite Insert

Malzeme - Material : SAE 430B / Grafit
Sertlik - Hardness : HB≥180

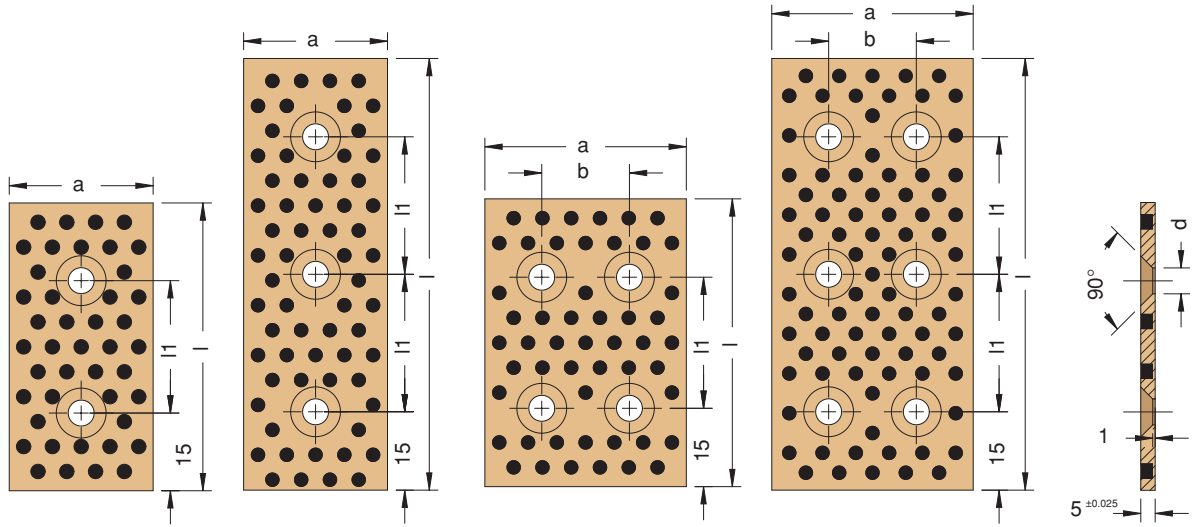


Form A

Form B

Form C

Form D

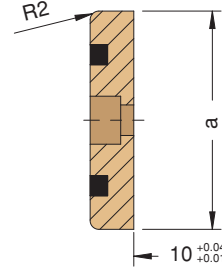
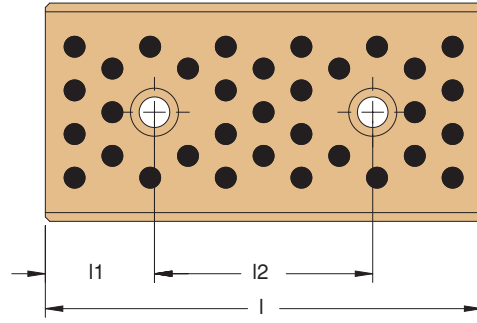
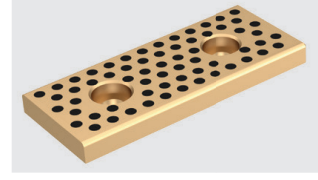


l1	b	d	Form	Civata/Bolt	a	l	Sip. Kodu/Or. Code		
20	-	6,5	A	2*M6x10	18	50	D81.01_018050		
45					75	D81.01_018075			
70					100	D81.01_018100			
60			B		18	150	D81.01_018150		
20					A	2*M8x10	28	50	D81.01_028050
45							75	D81.01_028075	
70		100	D81.01_028100						
60		B	28	150	D81.01_028150				
20			A	2*M8x16	38		50	D81.01_038050	
45					75		D81.01_038075		
70		100			D81.01_038100				
60		B	38		150	D81.01_038150			
45	A		2*M8x16		48	75	D81.01_048075		
70					100	D81.01_048100			
95		125		D81.01_048125					
60	B	48		150	D81.01_048150				
45		C		4*M8x16	75	75	D81.01_075075		
70					100	D81.01_075100			
95	125		D81.01_075125						
60	D	6*M8x16	75		150	D81.01_075150			
70			C		4*M8x16	100	100	D81.01_100100	
95						125	D81.01_100125		
60	D			6*M8x16		100	150	D81.01_100150	

D82.01

Grafitli Sürtünme Plakası / Wear Plate With Graphite Insert

Malzeme - Material : SAE 430B / Grafit Sertlik
- Hardness : HB \geq 180

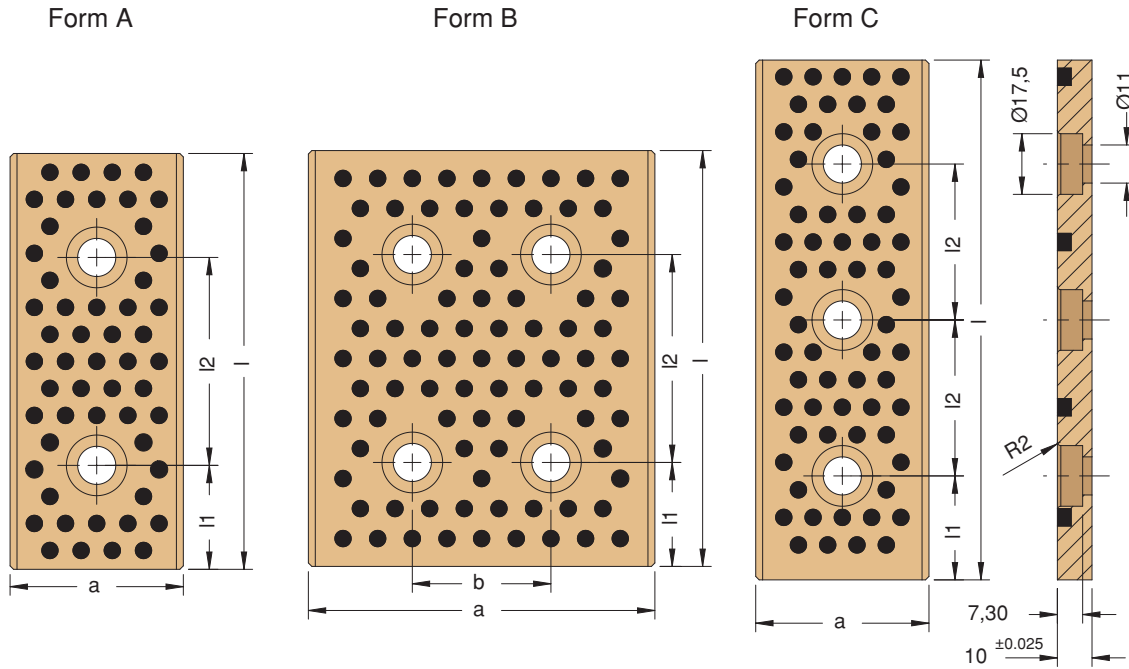
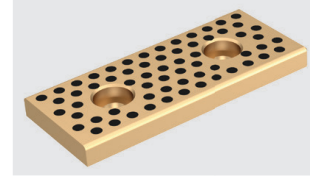


l1	l2	Civata Bolt	a	l	Sipariş Kodu Order Code
15	45	2xM6	18	75	D82.01_18 75
25	50		18	100	D82.01_18100
	75		18	125	D82.01_18125
	100		18	150	D82.01_18150
	15		45	28	75
25	50		28	100	D82.01_28100
	75		28	125	D82.01_28125
	100		28	150	D82.01_28150
	15		45	38	75
25	50		38	100	D82.01_38100
	75		38	125	D82.01_38125
	100		38	150	D82.01_38150
	15		45	48	75
25	50		48	100	D82.01_48100
	75		48	125	D82.01_48125
	100		48	150	D82.01_48150

D82.02

Grafitli Sürtünme Plakası / Wear Plate With Graphite Insert

Malzeme - Material : SAE 430B / Grafit
Sertlik - Hardness : HB≥180



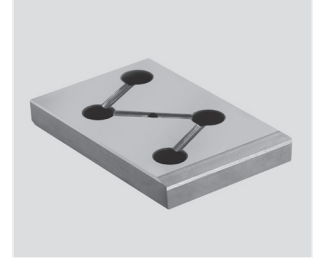
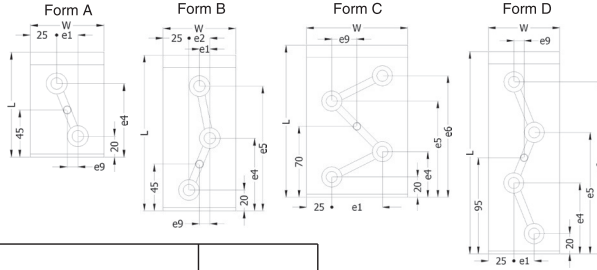
b	l1	l2	Form	a	l	Sip. Kodu/Or. Code	
	15	45	A	28	75	D82.02_028075	
		25		50	28	100	D82.02_028100
				75	28	125	D82.02_028125
				100	28	150	D82.02_028150
	15	45		38	75	D82.02_038075	
		25		50	38	100	D82.02_038100
				75	38	125	D82.02_038125
	25	100		38	150	D82.02_038150	
		15		45	48	75	D82.02_048075
				25	50	48	100
	75	48			125	D82.02_048125	
	100	48			150	D82.02_048150	
	50				48	200	D82.02_048200
				15	45	58	75
	25	50			58	100	D82.02_058100
				75	58	125	D82.02_058125
100			58	150	D82.02_058150		

b	l1	l2	Form	a	l	Sip. Kodu/Or. Code	
	50	100	A	58	200	D82.02_058200	
				75	75	D82.02_075075	
				75	100	D82.02_075100	
		25		50	75	125	D82.02_075125
				75	75	150	D82.02_075150
				100	75	200	D82.02_075200
	50	25	50	B	100	100	D82.02_100100
					100	125	D82.02_100125
					100	150	D82.02_100150
			150		100	200	D82.02_100200
					100	250	D82.02_100250
					100	125	150
100	100	150	C	125	200	D82.02_125200	
				125	250	D82.02_125250	
				150	150	D82.02_150150	
				150	200	D82.02_150200	

D80.15

Çelik Sürtünme Plakası

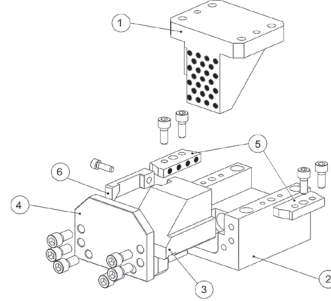
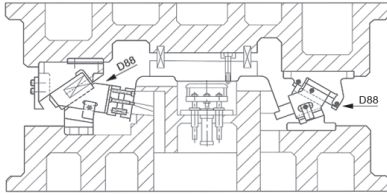
Malzeme : Çelik
Sertlik : 62± 2 HRC



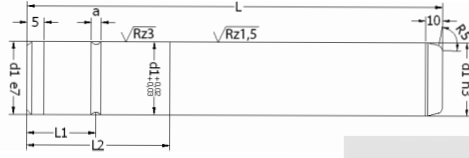
Sipariş Kodu	PSA Mabec Code	RENAULT Mabec Code	W	L	e1	e2	e3	e4	e5	e6	e7	e8	e9	Form
D80.15_070100	Z000166213	P446625854	70	100	20			70					10	A
150	P446626558	P446626558		150	10	20			120				10	B
200	P446627059	P446627059		200	20					170			10	D
D80.15_100150	P446626559	P446626559	100	150	50			45	95	120			25	C
200	P446627060	P446627060		200				70	120	170			25	D
250	P446627454	P446627454		250							220		25	E
D80.15_150200	P446627061	P446627061	150	200	100			70	120	170			50	D
250	P446627455	P446627455		250	100						220		50	E
D80.15_100100	P446625855	P446625855	100	100	30	50		45	70				25	I
300	P446627754	P446627754		300	50			70	120	170	220	270	25	F
D80.15_150100	P446626560	P446626560	150	100	25	75	100	70					50	G
150	P446626561	P446626561		150				45	95	120			50	H
300	P446627755	P446627755		300	100			70	120	170	220	270	50	F
D80.15_200100	Z000166220	P446627062	200	100	50	100	150	70					75	G

D88

Düz Kam



Sipariş Kodu	Yay Ölçüleri		İlk Durum		Final		Zımba Alanı B x H (mm)	Maksimum Çalışma Gücü (kN)	Kurs (mm)
	Ø Yay (mm)	Serbest Boy (mm)	Uzunluk (mm)	Yükleme (N)	Uzunluk (mm)	Yükleme (N)			
D88_05225	20	70	62	150	37	600	52x65	10	25
D88_05240	20	100	92	100	52	610	52x65	10	40
D88_05260	20	150	137	110	77	620	52x65	10	60
D88_06540	22	100	92	130	52	770	65x70	18	40
D88_06560	22	150	137	130	77	770	65x70	18	60
D88_10040	27	100	92	190	52	1150	100x100	30	40
D88_10060	27	150	137	210	77	1170	100x100	30	60
D88_10080	30	200	188	173	108	1325	100x100	30	80
D88_15040	35	100	92	320	52	1880	150x100	60	40
D88_15060	35	150	137	340	77	1900	150x100	60	60
D88_20040	35	100	92	470	52	2820	200x110	80	40
D88_20060	35	150	137	510	77	2850	200x110	80	60
D88_25040	40	100	92	620	52	3690	250x130	100	40
D88_25060	40	150	137	660	77	3720	250x130	100	60
D88_30040	40	100	92	620	52	3690	300x130	130	40
D88_30060	40	150	137	660	77	3720	300x130	130	60
D88_40060	60	150	148	156	88	4760	400x150	140	60
D88_50060	60	150	148	310	88	9520	500x150	140	60
D88_60060	60	150	148	310	88	9520	600x150	140	60



D10 Malzeme : Asil Çelik 1.1213 (Cf 53)
Sertlik : 62± 2 HRC
Kolon Isıl İşlem : İndüksiyon

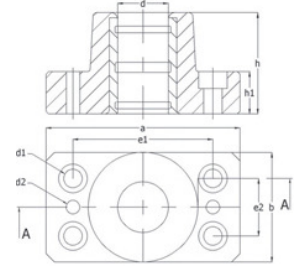


Ø	d1	L	L1	L2	a
D10_40180	40	180	37	77	8
	220	220			
	260	260			
	300	300			
	355	355			
D10_50200	50	200	47	95	8
	240	240			
	280	280			
	315	315			
	355	355			
	400	400			
	450	450			
D10_63240	63	240	60	120	8
	280	280			
	315	315			
	355	355			
	400	400			
	450	450			
D10_80240	80	240	60	120	8
	280	280			
	315	315			
	355	355			
	400	400			
	450	450			
	500	500			

D70.02

Bronzlu Döküm Blok

Malzeme : GG25

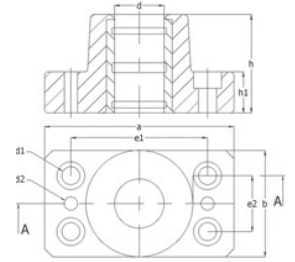


Ø	d	d1	d2	h	h1	a	b	e1	e2	M
D70.02_40	40	13	10	77	30	130	80	95	45	12
	50	50	15	10	95	35	160	96	118	14
	63	63	17	12	120	35	180	110	132	16
	80	80	21	14	120	40	215	130	160	20

D70.03

Çelik Kaymalı Döküm Blok

Malzeme : GG25
Sertlik : 62± 2 HRC
Isıl İşlem : Sementasyon

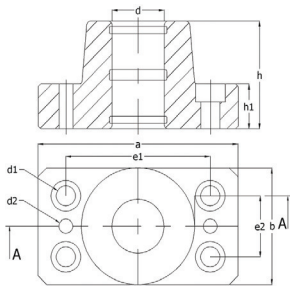


Ø	d	d1	d2	h	h1	a	b	e1	e2	M
D70.03_40	40	13	10	77	30	130	80	95	45	12
	50	50	15	10	95	35	160	96	118	14
	63	63	17	12	120	35	180	110	132	16
	80	80	21	14	120	40	215	130	160	20

D70.01

Döküm Blok

Malzeme : GG25

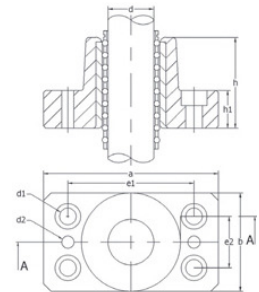


Ø	d	d1	d2	h	h1	a	b	e1	e2	M
D70.01_40	40	13	10	77	30	130	80	95	45	12
	50	50	15	10	95	35	160	96	118	14
	63	63	17	12	120	35	180	110	132	16
	80	80	21	14	120	40	215	130	160	20

D70.04

Bilyalı Döküm Blok

Malzeme : GG25
Sertlik : 62± 2 HRC
Isıl İşlem : Sementasyon

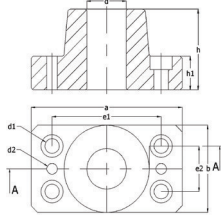


Ø	d	d1	d2	h	h1	a	b	e1	e2	M
D70.04_40	40	13	10	77	30	130	80	95	45	12
	50	50	15	10	95	35	160	96	118	14
	63	63	17	12	120	35	180	110	132	16
	80	80	21	14	120	40	215	130	160	20

D70.10

Kolon Sabitleme Bloğu

Malzeme : GG25

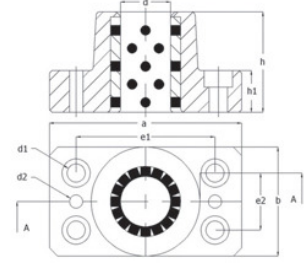


D70.05

Grafitli Döküm Blok

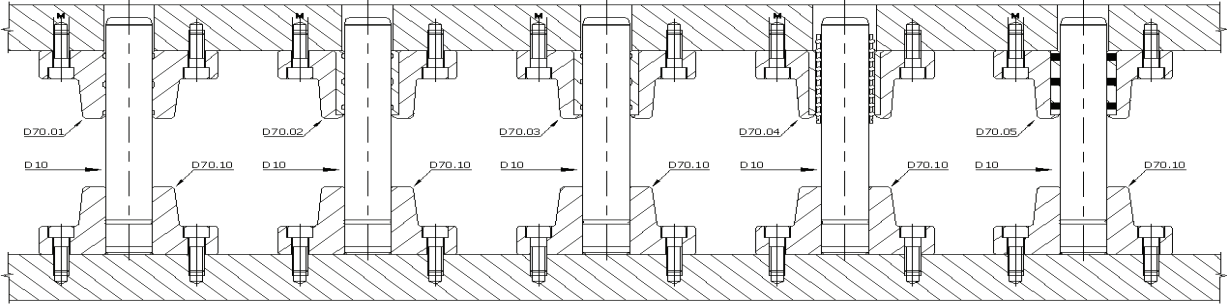
Malzeme : GG25 / SAE 430B

Sertlik : HB≥180



Sipariş Kodu	Ø	d	d1	d2	h	h1	a	b	e1	e2	M
D70.10_40	40	40	13	10	77	30	130	80	95	45	12
50	50	15	10	95	35	160	96	118	55	14	
63	63	17	12	120	35	180	110	132	62	16	
80	80	21	14	120	40	215	130	160	75	20	

Sipariş Kodu	Ø	d	d1	d2	h	h1	a	b	e1	e2	M
D70.05_40	40	40	13	10	77	30	130	80	95	45	12
50	50	15	10	95	35	160	96	118	55	14	
63	63	17	12	120	35	180	110	132	62	16	
80	80	21	14	120	40	215	130	160	75	20	



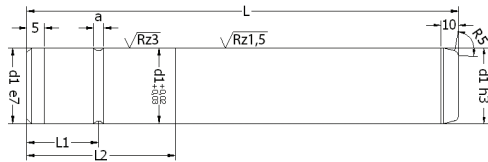
D11

Kolon

Malzeme : Asil Çelik 1.1213 (Cf 53)

Sertlik : 62± 2 HRC

Isıl İşlem : İndüksiyon

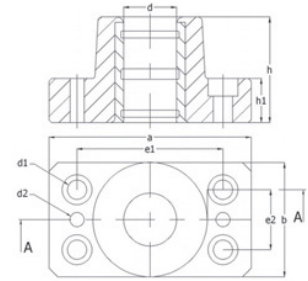


Sipariş Kodu	Ø	d1	L	L1	L2	a
D11_40160	40	160	25	50	8	
180		180				
200		200				
225		225				
250		250				
280		280				
D11_50160	50	160	35	70	8	
180		180				
200		200				
225		225				
250		250				
280		280				
315		315				

D71.02

Bronzlu Döküm Blok

Malzeme : GG25 / Bronze



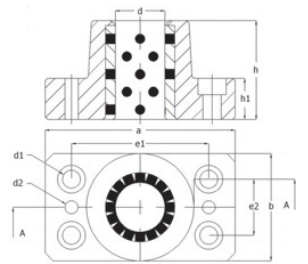
Sipariş Kodu	Ø	d	d1	d2	h	h1	a	b	e1	e2	M
D71.02_40	40	40	13	10	70	25	130	75	100	44	12
50	50	13	10	85	25	155	90	125	60	12	

D71.05

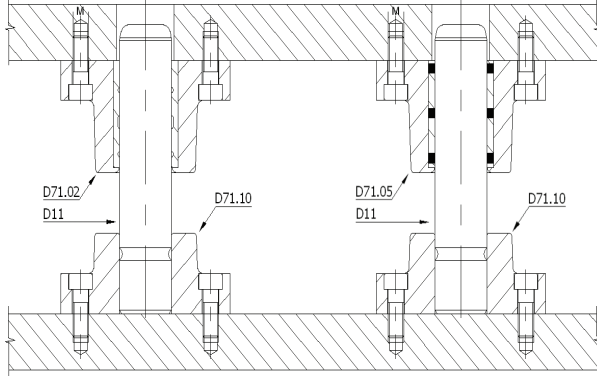
Grafitli Döküm Blok

Malzeme : GG25 / SAE 430B

Sertlik : HB≥180



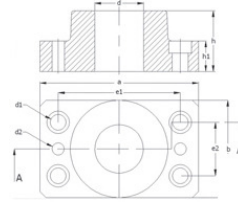
Sipariş Kodu	Ø	d	d1	d2	h	h1	a	b	e1	e2	M
D71.05_40	40	40	13	10	70	25	130	75	100	44	12
50	50	13	10	85	25	155	90	125	60	12	



D71.10

Kolon Sabitleme Bloğu

Malzeme : GG25



Sipariş Kodu	Ø		d1	d2	h	h1	a	b	e1	e2	M
	d	L									
D71.10_40	40	180	13	10	50	25	130	75	100	44	12
	50	200	13	10	70	25	155	90	125	60	12

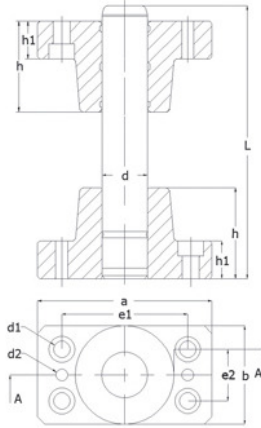
D70.011

Döküm Set

Malzeme : GG25 / Asil Çelik 1.1213 (Cf 53)

Sertlik : 62± 2 HRC

Isıl İşlem : İndüksiyon



Sipariş Kodu	Ø		d1	d2	h	h1	a	b	e1	e2
	d	L								
D70.011_40180	40	180	13	10	77	30	130	80	95	45
	220	220								
	260	260								
	300	300								
	355	355								
	400	400								
D70.011_50200	50	200	15	10	95	35	160	96	118	55
	240	240								
	280	280								
	315	315								
	355	355								
	400	400								
	450	450								
D70.011_63240	63	240	17	12	120	35	180	110	132	62
	280	280								
	315	315								
	355	355								
	400	400								
	450	450								
D70.011_80240	80	240	21	14	120	40	215	130	160	75
	280	280								
	315	315								
	355	355								
	400	400								
	450	450								
	500	500								

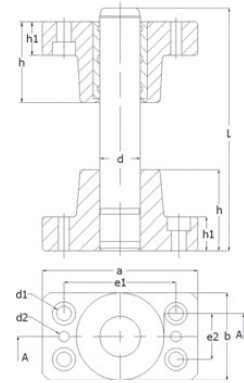
D70.021

Bronzlu Döküm Set

Malzeme : GG25 / Bronze / Asil Çelik 1.1213

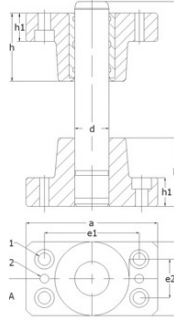
Sertlik : 62± 2 HRC

Isıl İşlem : İndüksiyon (Induction)



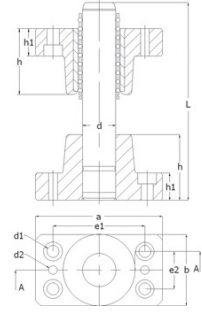
Sipariş Kodu	Ø		d1	d2	h	h1	a	b	e1	e2
	d	L								
D70.021_40180	40	180	13	10	77	30	130	80	95	45
	220	220								
	260	260								
	300	300								
	355	355								
	400	400								
D70.021_50200	50	200	15	10	95	35	160	96	118	55
	240	240								
	280	280								
	315	315								
	355	355								
	400	400								
	450	450								
D70.021_63240	63	240	17	12	120	35	180	110	132	62
	280	280								
	315	315								
	355	355								
	400	400								
	450	450								
D70.021_80240	80	240	21	14	120	40	215	130	160	75
	280	280								
	315	315								
	355	355								
	400	400								
	450	450								
	500	500								

D70.031 Malzeme : GG25
Çelik Kaymalı Sertlik : 62± 2 HRC
Döküm Set Isıl İşlem : İndüksiyon Sementasyon



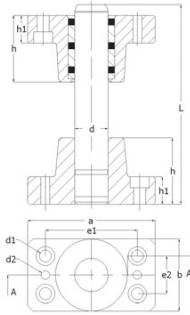
Sipariş Kodu	Ø	d	L	d1	d2	h	h1	a	b	e1	e2
D70.031_40180	40	180	13	10	77	30	130	80	95	45	
		220									
		260									
		300									
		355									
		400									
D70.031_50200	50	200	15	10	95	35	160	96	118	55	
		240									
		280									
		315									
		355									
		400									
		450									
D70.031_63240	63	240	17	12	120	35	180	110	132	62	
		280									
		315									
		355									
		400									
		450									
D70.031_80240	80	240	21	14	120	40	215	130	160	75	
		280									
		315									
		355									
		400									
		450									
		500									

D70.041 Malzeme : GG25
Sertlik : 62± 2 HRC
Bilyalı Döküm Isıl İşlem : İndüksiyon Sementasyon



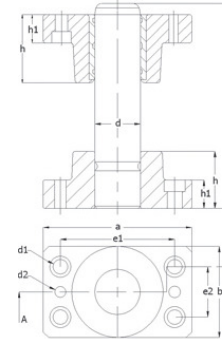
Sipariş Kodu	Ø	d	L	d1	d2	h	h1	a	b	e1	e2
D70.041_40180	40	180	13	10	77	30	130	80	95	45	
		220									
		260									
		300									
		355									
		400									
D70.041_50200	50	200	15	10	95	35	160	96	118	55	
		240									
		280									
		315									
		355									
		400									
		450									
D70.041_63240	63	240	17	12	120	35	180	110	132	62	
		280									
		315									
		355									
		400									
		450									
D70.041_80240	80	240	21	14	120	40	215	130	160	75	
		280									
		315									
		355									
		400									
		450									
		500									

D70.051 Malzeme : GG25
SAE 430B
Grafitli Döküm Sertlik : 62± 2 HRC
Set HB≥180
Isıl İşlem : İndüksiyon



Sipariş Kodu	Ø	d	L	d1	d2	h	h1	a	b	e1	e2
D70.051_40180	40	180	13	10	77	30	130	80	95	45	
		220									
		260									
		300									
		355									
		400									
D70.051_50200	50	200	15	10	95	35	160	96	118	55	
		240									
		280									
		315									
		355									
		400									
		450									
D70.051_63240	63	240	17	12	120	35	180	110	132	62	
		280									
		315									
		355									
		400									
		450									
D70.051_80240	80	240	21	14	120	40	215	130	160	75	
		280									
		315									
		355									
		400									
		450									
		500									

D71.021 Malzeme : GG25 / Bronze
Sertlik : 62± 2 HRC
Bronzlu Döküm Isıl İşlem : İndüksiyon Set

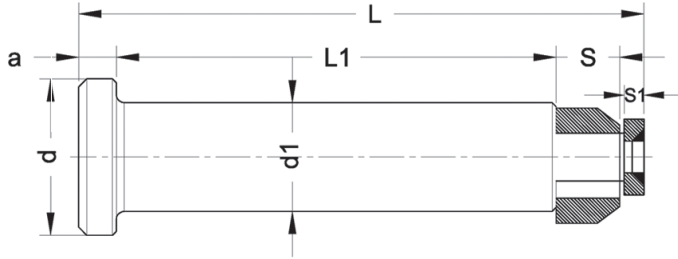


Sipariş Kodu	Ø	d	L	d1	d2	h	h1	a	b	e1	e2
D71.021_40160	40	160	13	10	70	25	130	75	100	44	
		180									
		200									
		225									
		250									
		280									
D71.10_40	40										
D71.021_50160	50	160	13	10	85	25	155	90	125	60	
		180									
		200									
		225									
		250									
		280									
		315									
D71.10_50	50										
				13	10	70	25	155	90	125	60

D19.01

Taşıma Mili / Lifting Pins CNOMO-Norm

Malzeme - Material: Çelik (Steel)



Sipariş Kodu	d1	PSA Mabec Code	Taşıma Kap. Capacity (Kg) 2 Pcs.	d	L	L1	a	S	s1
D19.01_32	32	P953254770	6400	40	154	132	6	10	5
	40	P953255870	10000	50	197.75	170	8	12.5	6
	50	P953256670	16000	63	247.6	212	10	16	8
	63	P953257470	25000	80	309	265	12	20	10

Warning!

In utilisation for turnover the load is supported from two pins only.

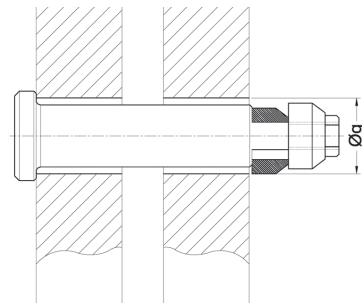
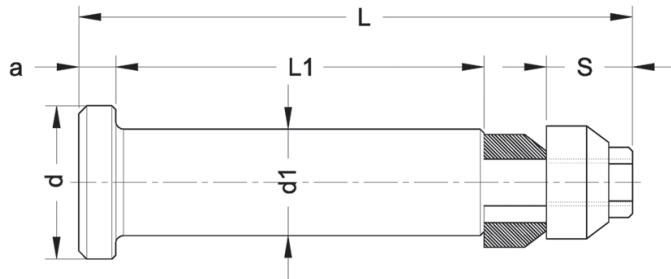
Dikkat!

Kalıp çevirme için kullanılırken yükleme sadece iki pim ile yapılmalıdır.

D19.02

Taşıma Mili / Lifting Pins

Malzeme - Material: Çelik (Steel)

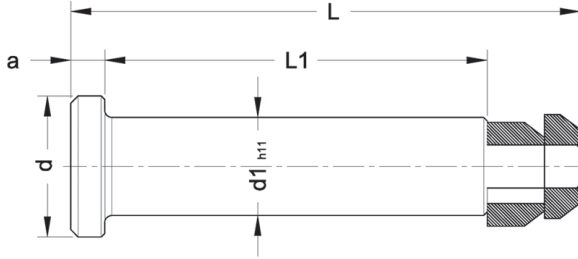


Sipariş Kodu	g	Taşıma Kapasitesi Capacity (Kg) 2 Pcs.	d	L	L1	d1	a	s
D19.02_16	16	1200	25	102.5	77	15.6	6	11.5
	21	2000	30	113.5	86	20.6	6	13.5
	26	4000	35	128.5	100	25.6	6	13.5
	34	8000	43	166.5	135	33	6	15.5
	44	14000	53	215.5	175	43	8	20.5

D19.03

Taşıma Mili / Lifting Pins

Malzeme - Material: Çelik (Steel)



Sipariş Kodu	FORD CODE WDX2260	Ø d1	Taşıma Kapasitesi Capacity(Kg) 2 Pcs.	d	a	L	L1
D19.03_35	0135	35	3200	45	12	162.5	125
50	0150	50	8000	63	12	227.5	190
63	0163	63	12500	75	12	317.5	280
80	0180	80	31500	95	12	357.5	320

Warning!

In utilisation for turnover the load is supported from two pins only.

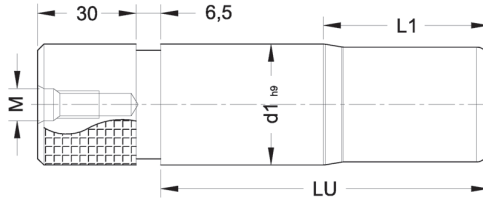
Dikkat!

Kalıp çevirme için kullanılırken yükleme sadece iki pim ile yapılmalıdır.

D19.50

Emniyet Pimi / Pad Retainer Pin

Malzeme - Material: CK45



Sipariş Kodu	Ø d1	LU	PSA MABEC CODE	RENAULT MABEC CODE	L1	M
D19.50_20081	20	81	Z000 400 337	R100 306 188	19	M8
25081	25	81	Z000 400 338	R100 306 190	19	M8
25098	25	98	Z000 400 339	R100 306 191	19	M8
32103	32	103	Z000 400 487	R100 306 194	26	M8
32148	32	148	Z000 400 342	R100 306 198	26	M8
40132	40	132	Z000 400 345	R100 306 201	33	M10
40192	40	192	Z000 400 346	R100 306 204	33	M10
50165	50	165	Z000 400 349	R100 306 207	41	M10
50220	50	220	Z000 400 350	R100 306 209	41	M10
63210	63	210	Z000 400 353	R100 306 210	51	M12
63250	63	250	Z000 400 354	R100 306 213	51	M12
80210	80	210	Z000 400 846	R100 357 232	51	M12

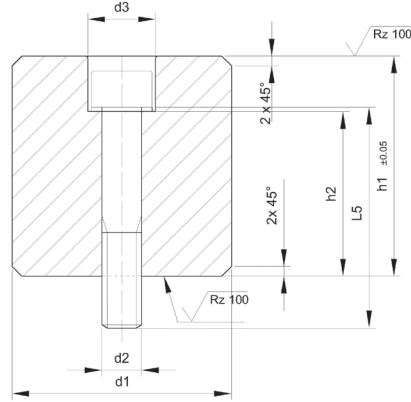
D17.01

Stoplama Bloğu
Stop Block

Malzeme - Material: Çelik - Steel



New



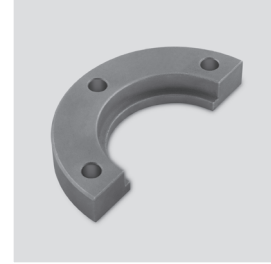
Sipariş Kodu	VW/AUDI CODE	d1	d2	d3	h1	Taşınma Yüğü	Adet
D17.01_060xxx	39V1162/14	60	14	20	1)	< 1800 kN	4
080xxx	39V1162/15	80				≥ 1800 - 3400 kN	
100xxx	39V1162/25	100	>3400 - 5300 kN				
120xxx	39V1162/17	120	>5300 - 10000 kN				
150xxx	39V1162/18	150	>10000 - 25000 kN	8			

DIN EN ISO 4762	M12		M16		M20	
h1 1)	h2	L5	h2	L5	h2	L5
≥ 040 - 060	22	40	20	40	15	50
> 060 - 080	42	60	36	60	30	60
> 080 - 100	62	80	56	80	50	80
> 100 - 120	82	100	76	100	70	100
> 120 - 140	102	120	96	120	90	120
> 140 - 160	122	140	116	140	110	140

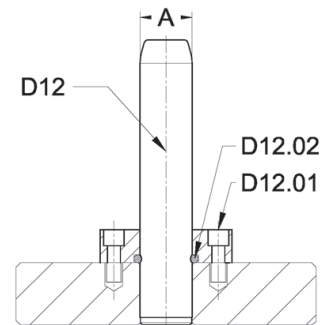
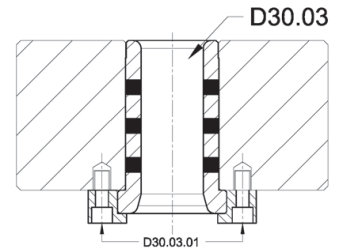
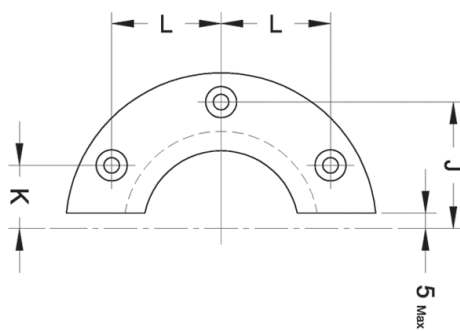
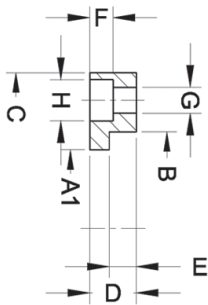
D30.03.01

Burç Tutucu Flanş / Retaining Flange - AFNOR

Malzeme - Material : CK45



Sipariş Kodu	PSA Mabec Code	RENAULT Mabec Code	Ø											
			A	A1	B	C	D	E	F	G	H	K	J	L
D30.03.01_025		M321 534 500	25	32	41	72	10	5	7	6.6	12	20		20
032	P446 932 717	M321 544 501	32	40	51	80	12	6	7	6.6	12	21		25
040	P446 932 712	M321 548 501	40	50	61	100	12	8	7	6.6	12	14	41	38.5
050	P446 932 713	M321 552 601	50	63	72	125	16	10	9	9	16	17	49	46
063	P446 932 714	M321 556 601	63	80	91	140	20	12	11	11	18	17	57.5	55
080	P446 932 715	M321 560 601	80	100	113	180	25	16	13	14	22	20	72	70
100		M321 562 700	100	125	141	200	32	20	13	14	22	25	85	81



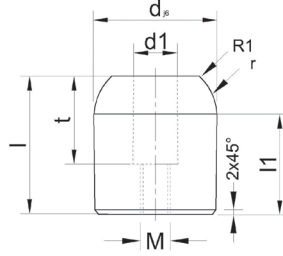
D51.01

Merkezeleme Pimi
Locating Pin

Malzeme - Material : Çelik - Steel 16MnCr5
Sertlik - Hardness : 58 - 62 Hrc



New



Sipariş Kodu	d	l	l1	d1	t	M	r
D51.01_2245	22	45	37.5	14	25	M10	20
3250	32	50	40	18	35	M12	20
4055	40	55	40	18	35	M12	20
5055	50	55	40	18	35	M12	20

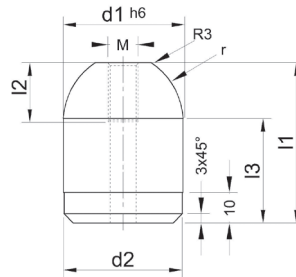
D51.02

Merkezeleme Pimi
Locating Pin

Malzeme - Material : Çelik - Steel 16MnCr5
Sertlik - Hardness : 58 - 62 Hrc



New

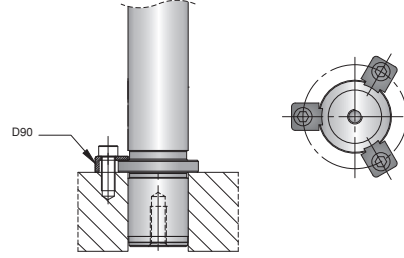
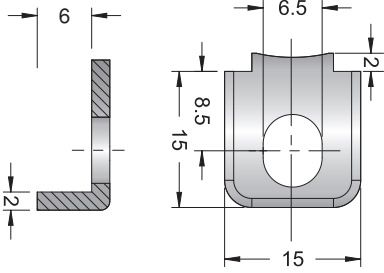
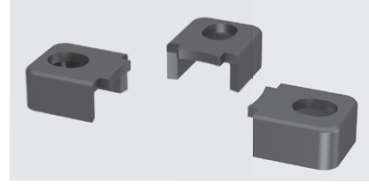


Sipariş Kodu	VW/AUDI CODE	d1	l1	l2	l3	d2	M	r
D51.02_2245	39V1205/1	22	45	16	35	21.95	M8	15
2255	39V1205/2	22	55	16	45	21.95	M8	15
3250		32	50	20	35	31.95	M10	20
4055	39V1205/3	40	55	20	35	39.95	M10	25
4065	39V1205/4	40	65	20	45	39.95	M10	25
4085	39V1205/5	40	85	20	65	39.95	M10	25
5055		50	55	20	35	49.95	M10	25

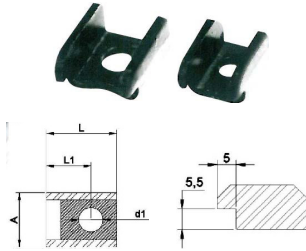
D90

Bağlama Pabucu / Pillar & Bush Clamp

Sertlik - Hardness : 40 - 42 HRC



M6,M8, U Tipi Bağlama Pabucu



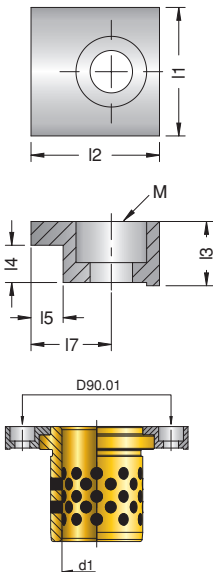
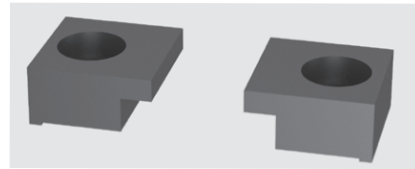
	d1	L1	L	A	Civata(Screw)
BPM.06	6,5	15	22,5	15	M6
BPM.08	8,5	16	24,5	19	M8

Sertlik
40-42 HRC M6x20 Inbus civata ile kullanılır.
40-42 HRC M8x20 Inbus civata ile kullanılır.

D90.01

Bağlama Pabucu / Pillar & Bush Clamp

Sertlik - Hardness : 40 - 42 HRC
=DIN 9832



FORD CODE	BMW CODE	PSA Mabec Code	M	I1	I2	I3	I4	I5	I7	d1	Sipariş Kodu Order Code
WDX1360 0901	B2 2983 11 2168834		6	20	20	10	6.3	5	12.5	25	D90.01_01
										32	
										40	
										50	
WDX1360 0902	B2 297811 2168842	Z000263005	10	32	32	16	10	10	21	63	D90.01_02
										80	
										100	
										125	
										160	
WDX1360 1001			10	32	32	16	6	10	21	25	D90.01_03
										32	
										40	
										50	
										63	
										100	
125											