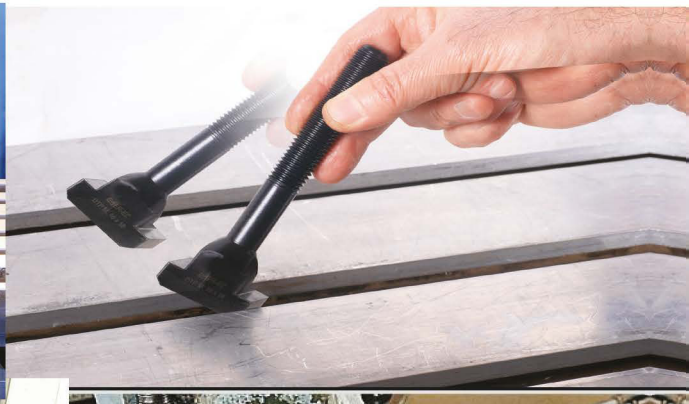
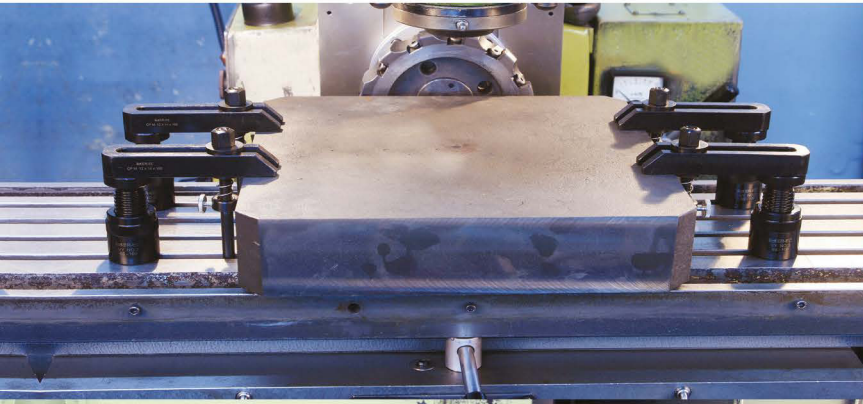


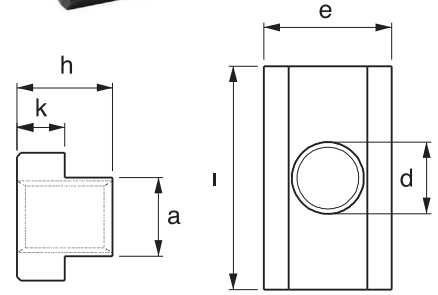
KALIP- İŞ PARÇASI BAĞLAMA EKİPMANLARI

- Bağlama Papuçları
- 'T' Ayaklı Saplamlar
- Düz Saplamlar
- Vidalı Yükselticiler
- 'T' Pabuçlar
- Takviyeli Somunlar
- Yandan Sıkma Pençe Pabuçlar
- Bağlama Setleri
- Blok Yandan Sıkmalar
- Paralel Setler
- Delik İşleme Aparatları
- Yatay - Dikey CNC Kuleleri
- CNC Yumuşak Ayaklar
- 'V' Yataklar



Uzun "T" Pabuç

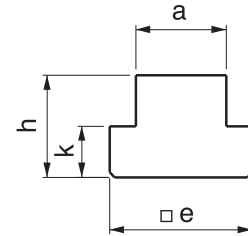
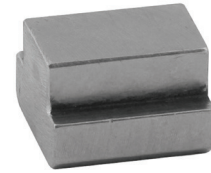
Referans Nr.	dx	a	e	l	h	k	(g)
1710-0608	M6x8	7.7	13	26	10	6	14
1710-0810	M8x10	9.7	15	30	12	6	30
1710-1012	M10x12	11.7	18	36	14	7	49
1710-1214	M12x14	13.7	22	44	16	8	82
1710-1416	M14x16	15.7	25	50	18	9	120
1710-1618	M16x18	17.7	28	56	20	10	170
1710-1820	M18x20	19.7	32	64	24	12	260
1710-2022	M20x22	21.7	35	70	28	14	360
1710-2224	M22x24	23.7	40	80	32	16	550
1710-2428	M24x28	27.7	44	88	36	18	730
1710-3036	M30x36	35.6	54	108	44	22	1390



Ürün Nr. 1710 Uzun "T" Pabuç

Deliksiz "T" Pabuç

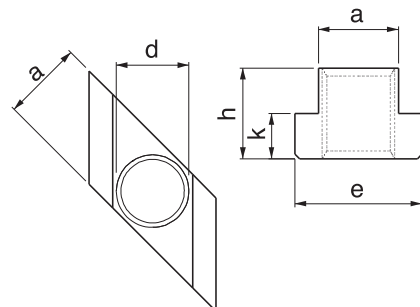
Referans Nr.	a	e	h	k	(g)	
1730-06	6	5.7	10	8	4	4
1730-08	8	7.7	13	10	6	10
1730-10	10	9.7	15	12	6	16
1730-12	12	11.7	18	14	7	27
1730-14	14	13.7	22	16	8	50
1730-16	16	15.7	25	18	9	70
1730-18	18	17.7	28	20	10	95
1730-20	20	19.7	32	24	12	150
1730-22	22	21.7	35	28	14	210
1730-24	24	23.7	40	32	16	300
1730-28	28	27.7	44	36	18	430
1730-36	36	35.6	54	44	22	800



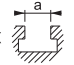

Ürün Nr. 1730 Deliksiz "T" Pabuç

Dereceli "T" Pabuç

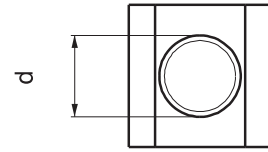
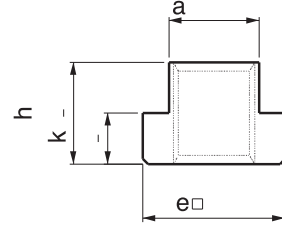
Referans Nr.	dx	a	e	h	k	(g)
1770-0810	M8x10	9.7	15	12	6	15
1770-1012	M10x12	11.7	18	14	7	20
1770-1014	M10x14 *	13.7	22	16	8	30
1770-1214	M12x14					25
1770-1416	M14x16	15.7	25	18	9	35
1770-1018	M10x18 *	17.7	28	20	10	65
1770-1618	M16x18					45
1770-1620	M16x20 *	19.7	32	24	12	80
1770-1820	M18x20					70
1770-1622	M16x22 *	21.7	35	28	14	120
1770-2022	M20x22					100
1770-1628	M16x28 *	27.7	44	36	18	280
1770-2028	M20x28 *					250
1770-2428	M24x28					220



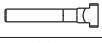
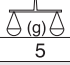
Ürün Nr. 1770 Dereceli "T" Pabuç

Referans Nr.	dx 	a	e	h	k	
1750-0608	M6x8	7.7	13	10	6	9
1750-0810	M8x10	9.7	15	12	6	12
1750-0812	M8x12	11.7	18	14	7	22
1750-1012	M10x12					20
1750-0814	M8x14	13.7	22	16	8	40
1750-1014	M10x14					37
1750-1214	M12x14					35
1750-0816	M8x16	15.7	25	18	9	60
1750-1016	M10x16					50
1750-1216	M12x16					50
1750-1416	M14x16					45
1750-0818	M8x18	17.7	28	20	10	90
1750-1018	M10x18					87
1750-1218	M12x18					80
1750-1418	M14x18					75
1750-1618	M16x18					65
1750-1620	M16x20	19.7	32	24	12	110
1750-1820	M18x20					105
1750-1622	M16x22	21.7	35	28	14	175
1750-1822	M18x22					160
1750-2022	M20x22					155
1750-1624	M16x24	23.7	40	32	16	260
1750-2024	M20x24					230
1750-2224	M22x24					220
1750-1628	M16x28	27.7	44	36	18	380
1750-2028	M20x28					350
1750-2228	M22x28					340
1750-2428	M24x28					320
1750-2436	M24x36	35.6	54	44	22	700
1750-3036	M30x36					600

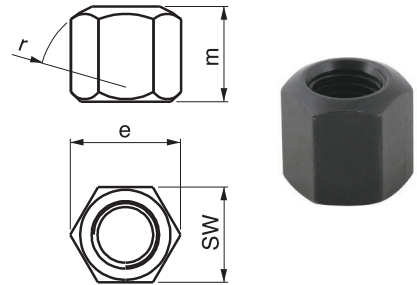
"T" Pabuç




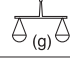
DIN 508 Ürün Nr. 1750 "T" Pabuç

Referans Nr.		sw	e	m	r	
1790-06	M6	10	11.5	9	9	5
1790-08	M8	13	15	12	12	9
1790-10	M10	17	19.6	15	15	14
1790-12	M12	19	21.9	18	17	20
1790-14	M14	22	25.4	21	20	45
1790-16	M16	24	27.7	24	22	60
1790-18	M18	27	31.2	27	24	85
1790-20	M20	30	34.6	30	27	110
1790-22	M22	32	36.9	33	30	130
1790-24	M24	36	41.5	36	32	200
1790-30	M30	46	53.1	45	41	400
1790-36	M36	55	63.5	54	50	720

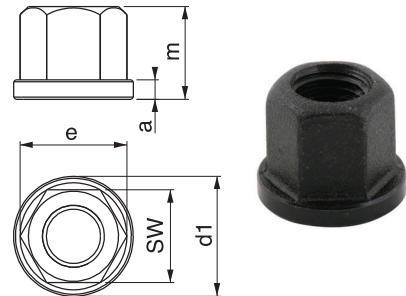
Takviyeli Somun



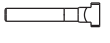
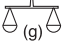
DIN 6330B Ürün Nr. 1790 Takviyeli Somun

Referans Nr.		sw	e	m	a	d1	
1810-08	M8	13	15	12	3.5	18	12
1810-10	M10	17	19.7	15	4	22	25
1810-12	M12	19	21.9	18	4	25	35
1810-14	M14	22	25.4	21	4.5	28	50
1810-16	M16	24	27.7	24	5	31	70
1810-18	M18	27	31.2	27	5	34	95
1810-20	M20	30	34.6	30	6	37	130
1810-22	M22	32	36.9	33	6	40	160
1810-24	M24	36	41.5	36	6	45	230
1810-30	M30	46	53.1	45	8	58	470
1810-36	M36	55	63.0	54	10	68	800

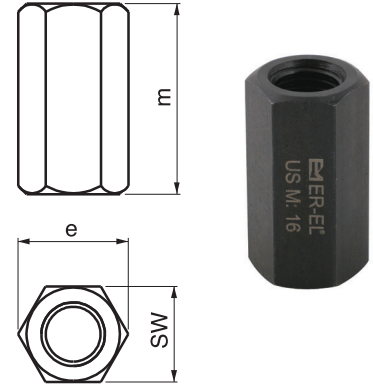
Pullu Somun



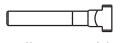

DIN 6331 Ürün Nr. 1810 Pullu Somun

Referans Nr.		sw	e	m	
1830-06	M6	10	11.7	18	8
1830-08	M8	13	15	24	19
1830-10	M10	17	19.6	30	45
1830-12	M12	19	21.6	36	65
1830-14	M14	22	25.4	42	95
1830-16	M16	24	27.7	48	120
1830-18	M18	27	31.2	54	170
1830-20	M20	30	34.6	60	250
1830-22	M22	32	36.9	66	280
1830-24	M24	36	41.5	72	400
1830-30	M30	46	53.1	90	850
1830-36	M36	55	63.5	108	1470

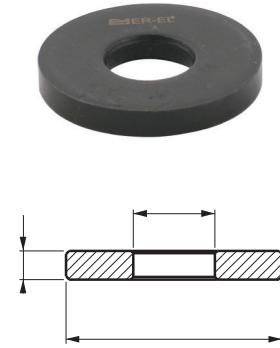
Uzatma Somun



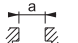

Ürün Nr. 1830 Uzatma Somun

Referans Nr.			d1	d2	s	
	metrik	whitworth				
1870-06	M6	1/4	6.4	17	3	6
1870-08	M8	5/16	8.4	23	4	10
1870-10	M10	3/8	10.5	28	4	16
1870-12	M12	1/2	13	35	5	35
1870-14	M14	-	15	40	5	40
1870-16	M16	5/8	17	45	6	60
1870-18	M18	-	19	45	6	60
1870-20	M20	3/4	21	50	6	75
1870-22	M22	7/8	23	50	8	95
1870-24	M24	7/8	25	60	8	170
1870-30	M30	11/8	31	68	10	230
1870-36	M36	11/4	38	80	12	350

Pul



DIN 6340 Ürün Nr. 1870 Pul

Referans Nr.		
1950-1214	12-14	40
1950-1618	16-18	50
1950-2022	20-22	55
1950-2428	24-28	80

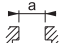

Ürün Nr. 1950 "T" Kanal temizleyici



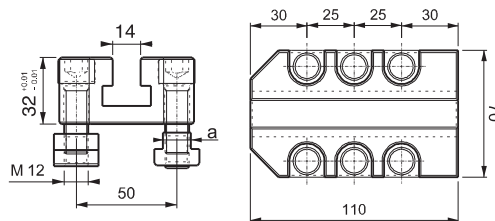
"T" Kanal Temizleyici



Modüler "T" Blok

Referans Nr.		
1960-110	14-16-18-20	1200

Ürün Nr. 1960 Modüler "T" Blok



Somunlu Pullu "T" Ayaklı Saplama

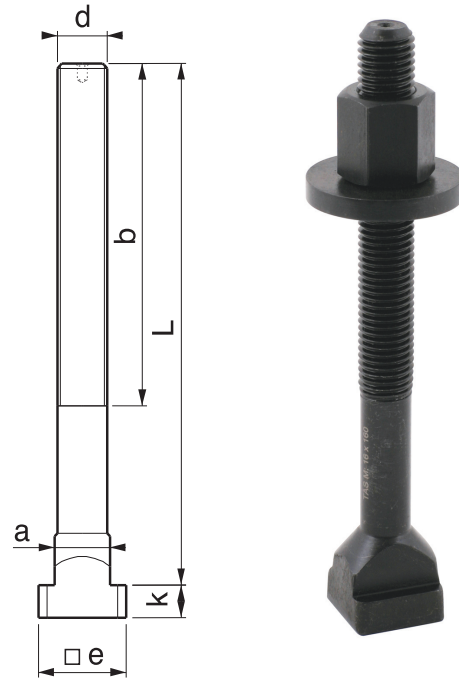
Referans Nr.	dx	x L	b	a	e	k	(g)
1610-1010040		x40	30				65
1610-1010063	M10x10	x63	45	9.7	15	6	80
1610-1010080		x80	50				90
1610-1010100		x100	60				110
1610-1012050		x50	35				100
1610-1012063	M10x12	x63	40	11.7	18	7	120
1610-1012080		x80	55				130
1610-1012100		x100	60				150
1610-1012125		x125	75				175
1610-1012160		x160	90				225
1610-1012200		x200	120				270
1610-1212050		x50	35				120
1610-1212063	M12x12	x63	40	11.7	18	7	128
1610-1212080		x80	55				130
1610-1212100		x100	65				145
1610-1212125		x125	75				170
1610-1212160		x160	100				195
1610-1212200		x200	120				220
1610-1214050		x50	35				130
1610-1214063	M12x14	x63	45	13.7	22	8	145
1610-1214080		x80	55				155
1610-1214100		x100	65				165
1610-1214125		x125	75				180
1610-1214160		x160	100				210
1610-1214200		x200	120				240
1610-1416063		x63	45				200
1610-1416080	M14x16	x80	55	15.7	25	9	220
1610-1416100		x100	65				230
1610-1416125		X125	75				280
1610-1416160		x160	100				310
1610-1416200		x200	120				350
1610-1416250		x250	150				400
1610-1616063		x63	45				250
1610-1616080	M16x16	x80	55	15.7	25	9	275
1610-1616100		x100	65				290
1610-1616125		x125	85				300
1610-1616160		x160	100				420
1610-1616200		x200	125				435
1610-1616250		x250	150				530
1610-1618063		x63	45				260
1610-1618080	M16x18	x80	55	17.7	28	10	305
1610-1618100		x100	65				315
1610-1618125		x125	85				360
1610-1618160		x160	100				390
1610-1618200		x200	125				448
1610-1618250		x250	150				560
1610-1820080		x80	55				420
1610-1820100	M18x20	x100	65	19.7	32	12	460
1610-1820125		x125	85				490
1610-1820160		x160	110				580
1610-1820200		x200	125				610
1610-1820250		x250	150				700
1610-1820315		x315	190				930
1610-2020080		x80	55				520
1610-2020100	M20x20	x100	65	19.7	32	12	560
1610-2020125		x125	85				570
1610-2020160		x160	110				680
1610-2020200		x200	125				710
1610-2020250		x250	160				800
1610-2020315		x315	190				1030
1610-2022080		x80	55				530
1610-2022100	M20x22	x100	65	21.7	35	14	610
1610-2022125		x125	85				670
1610-2022160		x160	110				710
1610-2022200		x200	125				720
1610-2022250		x250	150				890
1610-2022315		x315	190				1050
1610-2224080		x80	55				900
1610-2224100	M22x24	x100	65	23.7	40	16	960
1610-2224125		x125	85				1020
1610-2224160		x160	110				1250
1610-2224200		x200	125				1400
1610-2224250		x250	150				1600
1610-2224315		x315	190				1700

Referans Nr.	dx	x L	b	a	e	k	(g)
1610-2424100		x100	70				910
1610-2424125		x125	85				970
1610-2424160	M24x24	x160	110	23.7	40	16	1040
1610-2424200		x200	125				1265
1610-2424250		x250	150				1410
1610-2424315		x315	190				1640
1610-2424400		x400	240				1780
1610-2428100		x100	70				980
1610-2428125		x125	85				1010
1610-2428160	M24x28	x160	110	27.7	44	18	1150
1610-2428200		x200	125				1240
1610-2428250		x250	150				1500
1610-2428315		x315	190				1730
1610-2428400		x400	240				1860
1610-2428500		x500	290				2310
1610-3036125		x125	80				1860
1610-3036160	M30x36	x160	110	35.6	54	22	1950
1610-3036200		x200	135				2230
1610-3036250		x250	150				2550
1610-3036315		x315	200				2950
1610-3036500		x500	300				3950
1610-3642160		x160	100				3220
1610-3642250	M36x42	x250	175	41.6	65	26	3840
1610-3642400		x400	250				4950
1610-3642600		x600	340				6500
1610-4248160		x160	100				6000
1610-4248250	M42x48	x250	175	47.6	75	30	6900
1610-4248400		x400	250				8100

DIN 787

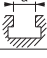
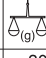
Ürün Nr. 1610 Somunlu Pullu "T" Ayaklı Saplama

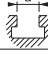

- Malzeme 42 CrMo 4 DIN
- Kalite 10.9
- Siyah kaplama



Not: 200°C üzerindeki ısıya mukavim ortamdaki çalışmalarda firmamız ile irtibata geçiniz.

“T” Ayaklı Saplama

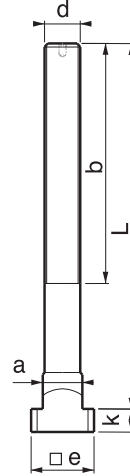
Referans Nr.	dx  x L	b	a	e	k	
1590-1010040	x40	30				30
1590-1010063	x63	45	9.7	15	6	50
1590-1010080	x80	50				60
1590-1010100	x100	60				70
1590-1012050	x50	35				60
1590-1012063	x63	40	11.7	18	7	65
1590-1012080	x80	55				75
1590-1012100	x100	60				90
1590-1012125	x125	75				110
1590-1012160	x160	90				135
1590-1012200	x200	120				160
1590-1212050	x50	35				65
1590-1212063	x63	40	11.7	18	7	70
1590-1212080	x80	55				80
1590-1212100	x100	65				100
1590-1212125	x125	75				120
1590-1212160	x160	100				140
1590-1212200	x200	120				170
1590-1214050	x50	35				70
1590-1214063	x63	45	13.7	22	8	80
1590-1214080	x80	55				100
1590-1214100	x100	65				110
1590-1214125	x125	75				120
1590-1214160	x160	100				150
1590-1214200	x200	120				180
1590-1416063	x63	45				115
1590-1416080	x80	55	15.7	25	9	130
1590-1416100	x100	65				150
1590-1416125	x125	75				180
1590-1416160	x160	100				220
1590-1416200	x200	120				280
1590-1416250	x250	150				300
1590-1616063	x63	45				140
1590-1616080	x80	55	15.7	25	9	160
1590-1616100	x100	65				180
1590-1616125	x125	85				225
1590-1616160	x160	100				270
1590-1616200	x200	125				315
1590-1616250	x250	150				380
1590-1618063	x63	45				160
1590-1618080	x80	55	17.7	28	10	185
1590-1618100	x100	65				203
1590-1618125	x125	85				245
1590-1618160	x160	100				280
1590-1618200	x200	125				330
1590-1618250	x250	150				430
1590-1820080	x80	55				290
1590-1820100	x100	65	19.7	32	12	340
1590-1820125	x125	85				390
1590-1820160	x160	110				470
1590-1820200	x200	125				550
1590-1820250	x250	150				670
1590-1820315	x315	190				800
1590-2020080	x80	55				300
1590-2020100	x100	65	19.7	32	12	350
1590-2020125	x125	85				400
1590-2020160	x160	110				480
1590-2020200	x200	125				560
1590-2020250	x250	160				690
1590-2020315	x315	190				820
1590-2022080	x80	55				330
1590-2022100	x100	65	21.7	35	14	370
1590-2022125	x125	85				428
1590-2022160	x160	110				500
1590-2022200	x200	125				570
1590-2022250	x250	150				680
1590-2022315	x315	190				820
1590-2224080	x80	55				480
1590-2224100	x100	65	23.7	40	16	540
1590-2224125	x125	85				600
1590-2224160	x160	110				770
1590-2224200	x200	125				900
1590-2224250	x250	150				960
1590-2224315	x315	190				1270

Referans Nr.	dx  x L	b	a	e	k	
1590-2424100	x100	70				540
1590-2424125	x125	85	23.7	40	16	600
1590-2424160	x160	110				770
1590-2424200	x200	125				900
1590-2424250	x250	150				960
1590-2424315	x315	190				1270
1590-2424400	x400	240				1410
1590-2428100	x100	70	27.7	44	18	650
1590-2428125	x125	85				730
1590-2428160	x160	110				800
1590-2428200	x200	125				950
1590-2428250	x250	150				1120
1590-2428315	x315	190				1350
1590-2428400	x400	240				1500
1590-2428500	x500	290				1950
1590-3036125	x125	80	35.6	54	22	1250
1590-3036160	x160	110				1450
1590-3036200	x200	135				1650
1590-3036250	x250	150				1900
1590-3036315	x315	200				2100
1590-3036500	x500	300				3300
1590-3642160	x160	100	41.6	65	26	2200
1590-3642250	x250	175				2820
1590-3642400	x400	250				3930
1590-3642600	x600	340				5480
1590-4248160	x160	100	47.6	75	30	3400
1590-4248250	x250	175				4300
1590-4248400	x400	250				5800

DIN 787

Ürün Nr. 1590 "T" Ayaklı Saplama

- Malzeme 42 CrMo 4 DIN
- Kalite 10.9
- Siyah kaplama



Not: 200°C üzerindeki ısıya mukavim ortamdaki çalışmalarda firmamız ile irtibata geçiniz.

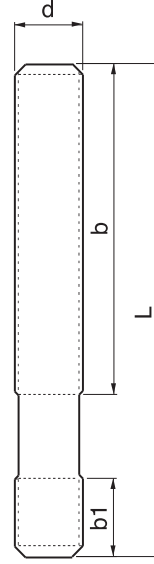


Düz Saplama

Referans Nr.	d x L	b1	b	(g)	Referans Nr.	d x L	b1	b	(g)
1690-08040	x40		20	10	1690-36160	x160		80	1100
1690-08063	x63		40	20	1690-36200	x200		125	1340
1690-08080	x80		50	25	1690-36250	x250		160	1710
1690-08100	x100	M8	63	30	1690-36315	M36 x315	51	200	2150
1690-08125	x125		75	35	1690-36400	x400		250	2700
1690-08160	x160		100	45	1690-36500	x500		315	3450
					1690-36700	x700		400	4750
1690-10050	x50		25	25	1690-42315	M42 x315	59	200	2950
1690-10063	x63		32	35	1690-42400	x400		250	3750
1690-10080	x80	M10	50	40	1690-42500	x500		315	4690
1690-10100	x100		75	50					
1690-10125	x125		75	60					
1690-10160	x160		100	80					
1690-10200	x200		125	100					
1690-12050	x50		25	35					
1690-12063	x63		32	45					
1690-12080	x80		50	55					
1690-12100	x100	M12	63	70					
1690-12125	x125		75	90					
1690-12160	x160		100	115					
1690-12200	x200		125	140					
1690-14063	x63		32	95					
1690-14080	x80		50	90					
1690-14100	x100	M14	63	95					
1690-14125	x125		75	120					
1690-14160	x160		100	150					
1690-14200	x200		125	195					
1690-14250	x250		160	240					
1690-16063	x63		32	85					
1690-16080	x80		50	105					
1690-16100	x100	M16	63	130					
1690-16125	x125		75	160					
1690-16160	x160		100	220					
1690-16200	x200		125	280					
1690-16250	x250		160	325					
1690-16315	x315		180	425					
1690-16500	x500		315	650					
1690-18080	x80		50	130					
1690-18100	x100	M18	60	160					
1690-18125	x125		75	200					
1690-18160	x160		100	260					
1690-18200	x200		125	320					
1690-18250	x250		150	400					
1690-18315	x315		180	500					
1690-20080	x80		32	190					
1690-20100	x100	M20	60	220					
1690-20125	x125		70	260					
1690-20160	x160		100	330					
1690-20200	x200		125	410					
1690-20250	x250		160	510					
1690-20315	x315		200	640					
1690-20400	x400		250	815					
1690-20500	x500		315	1020					
1690-22100	x100	M22	45	270					
1690-22125	x125		60	330					
1690-22160	x160		100	430					
1690-22200	x200		125	500					
1690-22250	x250		160	670					
1690-22315	x315		180	790					
1690-22400	x400		250	1070					
1690-24100	x100		45	290					
1690-24125	x125		70	380					
1690-24160	x160	M24	100	470					
1690-24200	x200		125	580					
1690-24250	x250		160	730					
1690-24315	x315		200	920					
1690-24400	x400		250	1160					
1690-24500	x500		315	1450					
1690-24630	x630		315	1650					
1690-30125	x125	M30	56	600					
1690-30200	x200		125	950					
1690-30250	x250		160	1230					
1690-30315	x315		200	1500					
1690-30500	x500		315	2360					
1690-30700	x700		400	3300					
1690-301000	x1000		400	4700					

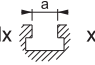

DIN 6379
Ürün Nr. 1690 Düz Saplama

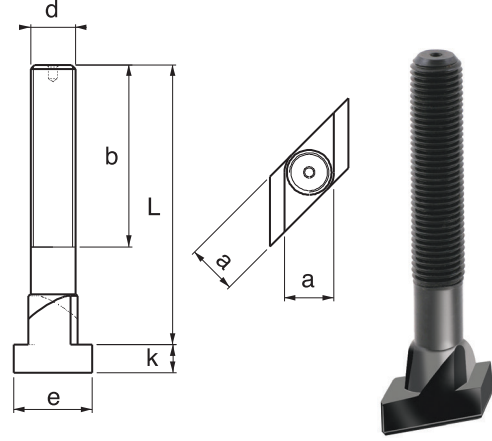
- Malzeme 41Cr 4 DIN
- Kalite 10.9
- Siyah kaplama



Not: 200°C üzerindeki ısıya mukavim ortamdaki çalışmalarda firmamız ile irtibata geçiniz.


Dereceli "T" Ayaklı Saplama

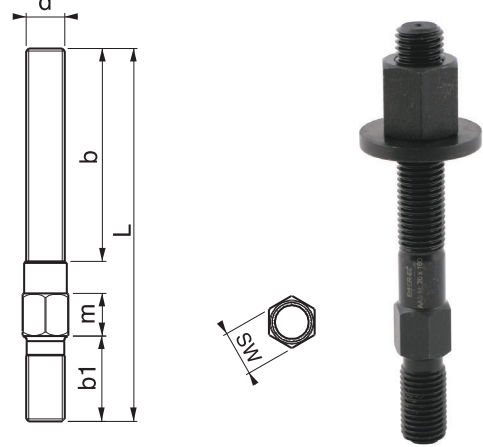
Referans Nr.		b	a	e	k	
1650-1214050	x50	35				70
1650-1214080	M12x14 x80	55	13.7	22	8	100
1650-1214125	x125	75				120
1650-1618063	x63	45				160
1650-1618100	M16x18 x100	65	17.7	28	10	220
1650-1618160	x160	100				280
1650-2022080	x80	55				330
1650-2022125	M20x22 x125	85	21.7	35	14	430
1650-2022200	x200	120				570
1650-2428100	x100	70				650
1650-2428125	M24x28 x125	85	27.7	44	18	770
1650-2428250	x250	150				1150



Ürün Nr. 1650 Dereceli "T" Ayaklı Saplama

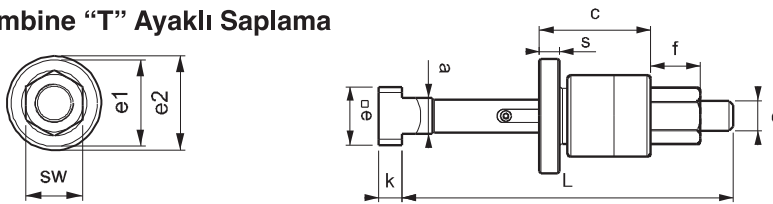
Anahtar Ağızlı Saplama

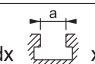

Referans Nr.	d	L	b	b1	m	sw	
1670-12130	M12	130	65	24	14	14	160
1670-12160		160	90				185
1670-14130	M14	130	65	28	15	15	216
1670-14160		160	90				246
1670-16140	M16	140	70	32	16	17	295
1670-16160		160	95				340
1670-18150	M18	150	70	35	19	19	395
1670-18180		180	95				450
1670-20150	M20	150	70	40	22	22	500
1670-20180		180	95				565
1670-22150	M22	150	70	40	22	24	650
1670-22180		180	95				900
1670-24170	M24	170	75	47	22	27	850
1670-24205		205	105				1025
1670-24250		250	140				1200
1670-30260	M30	260	145	55	32	36	1470
1670-30315		315	195				1800



Ürün Nr. 1670 Anahtar Ağızlı Saplama

Kombine "T" Ayaklı Saplama

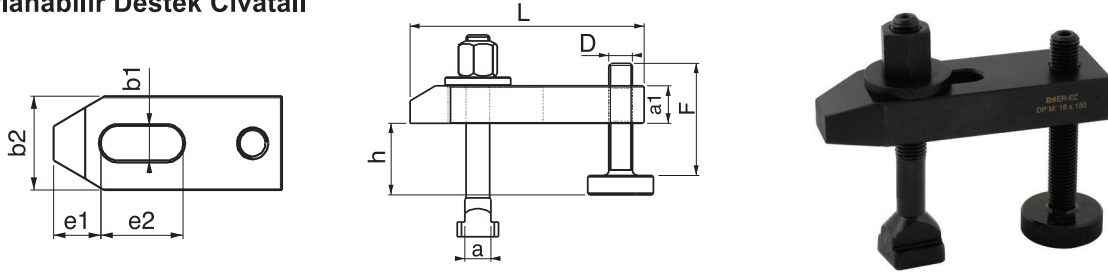


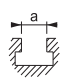

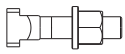


Referans Nr.		a	e	k	h-H	e1	e2	c	s	f	sw	
1630-2022200	M20x22x200	21.7	35	14	25-75	49	69	92	12	30	30	1550
1630-2022250	M20x22x250	21.7	35	14	70-120	49	69	92	12	30	30	1800
1630-2424200	M24x24x200	23.7	40	16	25-75	53	74	92	12	30	36	1900
1630-2424250	M24x24x250	23.7	40	16	70-120	53	74	92	12	30	36	2100
1630-2428200	M24x28x200	27.7	44	18	25-75	53	74	92	12	30	36	2200
1630-2428250	M24x28x250	27.7	44	18	70-120	53	74	92	12	30	36	2500
1630-3036200	M30x36x200	35.6	54	22	25-75	68	88	94	14	30	46	3250
1630-3036250	M30x36x250	35.6	54	22	70-120	68	88	94	14	30	46	3500



Ürün Nr. 1630 Kombine "T" Ayaklı Saplama

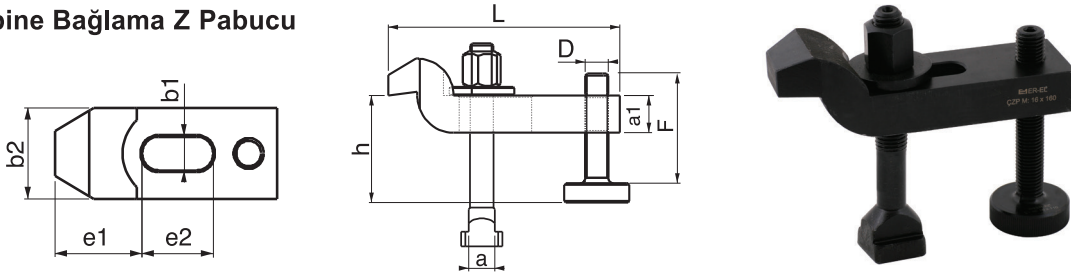
Ayarlanabilir Destek Civatalı

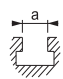

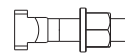




Referans Nr.		L			e1	e2	b1		h		
			a1	b2							
1170-1010080	10	80	15	30	15	30	11	M10x10x80	10-35	M10x42	330
1170-1212100	12	100	20	40	21	40	14.5	M12x12x100	12-40	M12x50	700
1170-1212125	12	125	20	40	21	50	14.5	M12x12x160	12-85	M12x95	740
1170-1214100	14	100	20	40	21	40	14.5	M12x14x100	12-40	M12x50	730
1170-1214125	14	125	20	40	21	50	14.5	M12x14x160	12-85	M12x95	750
1170-1616125	16	125	25	50	26	45	18.5	M16x16x125	15-50	M16x62	1400
1170-1616160	16	160	25	50	26	65	18.5	M16x16x160	15-85	M16x97	1600
1170-1618125	18	125	25	50	26	45	18.5	M16x18x125	15-50	M16x62	1500
1170-1618160	18	160	25	50	26	65	18.5	M16x18x160	15.85	M16x97	1600
1170-2020160	20	160	30	60	30	60	22.5	M20x20x160	15-45	M20x62	2600
1170-2020200	20	200	30	60	30	80	22.5	M20x20x200	15-80	M20x97	2700
1170-2022160	22	160	30	60	30	60	22.5	M20x22x160	15-45	M20x62	2800
1170-2022200	22	200	30	60	30	80	22.5	M20x22x200	15-80	M20x97	2900
1170-2424160	24	160	30	70	35	60	26.5	M24x24x160	16-60	M24x81	3200
1170-2424200	24	200	30	70	35	80	26.5	M24x24x200	16-95	M24x116	3650
1170-2428160	28	160	30	70	35	60	26.5	M24x28x160	16-60	M24x81	4000
1170-2428200	28	200	30	70	35	80	26.5	M24x28x200	16-95	M24x116	4150

Ürün Nr. 1170 Ayarlanabilir Destek Civatalı Kombine Bağlama Pabuç

Kombine Bağlama Z Pabuçu

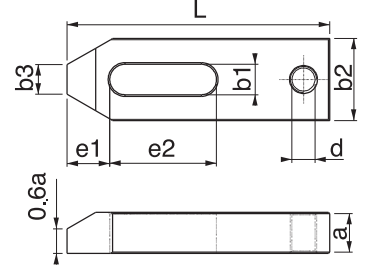


Referans Nr.		L			e1	e2	b1		h		
			a1	b2							
1190-1010100	10	100	15	30	32	32	11	M10x10x80	26-50	M10x42	350
1190-1212125	12	125	20	40	40	40	14.5	M12x12x100	33-60	M12x50	700
1190-1214125	14	125	20	40	40	40	14.5	M12x14x100	37-60	M12x50	750
1190-1616160	16	160	25	50	49	50	18.5	M16x16x125	41-75	M16x62	1300
1190-1618160	18	160	25	50	49	50	18.5	M16x18x125	41-75	M16x62	1500
1190-2020200	20	200	30	60	55	70	22.5	M20x20x160	46-75	M20x62	2500
1190-2022200	22	200	30	60	55	70	22.5	M20x22x160	46-75	M20x62	2700
1190-2424200	24	200	35	70	72	60	26	M24x24x200	52-95	M24x81	3800
1190-2428200	28	200	35	70	72	60	26	M24x28x200	52-95	M24x81	4000

Ürün Nr. 1190 Ayarlanabilir Destek Civatalı Kombine Bağlama "Z" Pabuç

Destek Delikli Düz Pabuç

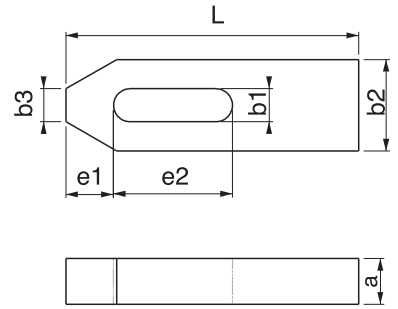
Referans Nr.	L	b1	metrik		a	b2	b3	e1	e2	d	(g)
			metrik	whitworth							
1330-06050	50	6,6	M6	1/4	10	20	8	10	20	M8	60
1330-08060	60	9	M8	5/16	12	25	10	13	22	M8	110
1330-10080	80	11	M10	3/8	15	30	12	15	30	M10	200
1330-12100	100	14,5	M12-M14	1/2	20	40	14	21	40	M12	550
1330-12125	125							21	50	M12	600
1330-16125	125	18,5	M16-M18	5/8	25	50	18	26	45	M16	1100
1330-16160	160								65	M16	1330
1330-20160	160				30	60	22		60	M20	2000
1330-20200	200	22,5	M20-M22	3/4	30	60	22	30	80	M20	2200
1330-20250	250				35	70	30		100	M20	2500
1330-24160	160				30	70	26		60	M24	1900
1330-24200	200	26	M24	1	35	70	26	35	80	M24	2500
1330-24250	250				35	70	30		100	M24	3750
1330-24315	315				40	80	35		130	M24	4200
1330-30250	250	33	M30	11 / 4	40	80	34	45	100	M24	4800
1330-30315	315				50	100	43		130	M24	7600
1330-36400	400	43	M36-M42	11 / 2	60	100	43	100	150	M24	17800



Ürün Nr. 1330 Destek Delikli Düz Pabuç

Düz Pabuç

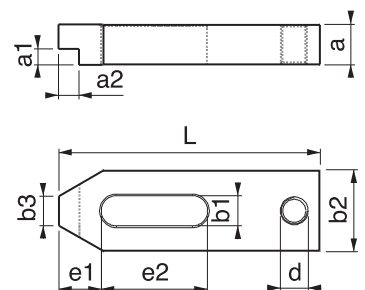
Referans Nr.	L	b1	metrik		a	b2	b3	e1	e2	(g)
			metrik	whitworth						
1350-06050	50	6,6	M6	1/4	10	20	8	10	20	60
1350-08060	60	9	M8	5/16	12	25	10	13	22	110
1350-10080	80	11	M10	3/8	15	30	12	15	30	220
1350-12100	100	14,5	M12-M14	1/2	20	40	14	21	40	490
1350-12125	125								50	640
1350-16125	125	18,5	M16-M18	5/8	25	50	18	26	45	1000
1350-16160	160								65	1270
1350-20160	160				30	60	22	30	60	1830
1350-20200	200	22,5	M20-M22	3/4	30	60	22	30	80	2240
1350-24200	200	26	M24	1	30	70	26	35	80	2650
1350-24250	250				35	70	26	35	100	3850
1350-30250	250	33	M30	11/4	40	80	34	45	100	5000
1350-30315	315				50	80	34	45	130	7800
1350-36400	400	43	M36-M42	11/2	60	100	43	100	150	18000



Ürün Nr. 1350 Düz Pabuç

Kademeli Destek Delikli Düz Pabuç

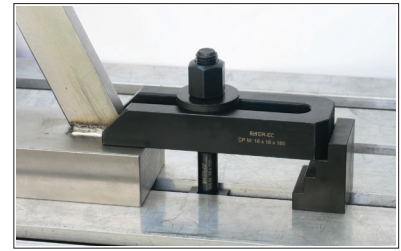
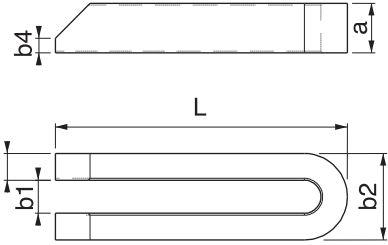
Referans Nr.	L	b1	metrik		a	b2	a1xa2	b3	e1	e2	d	(g)
			metrik	whitworth								
1370-10080	80	11	M10	3/8	15	30	5x8	12	15	30	M10	200
1370-12100	100	14,5	M12-14	1/2	20	40	8x10	14	21	40	M12	470
1370-12125	125									50	M12	610
1370-16125	125	18,5	M16-18	5/8	25	50	10x12,5	18	26	45	M16	960
1370-16160	160									65	M16	1190
1370-20160	160				30	60	12x15	22	30	60	M20	1730
1370-20200	200	22,5	M20-22	3/4	30	60	12x15	22	30	80	M20	2140
1370-24160	160				30	70	12x15	26	35	60	M24	1900
1370-24200	200	26	M24	1	35	70	14x17	26	35	80	M24	2500
1370-24250	250				35	70	14x17	26	35	100	M24	3700



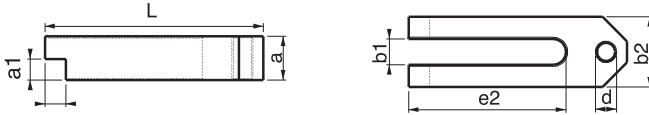
Ürün Nr. 1370 Kademeli Destek Delikli Düz Pabuç

Çatal Pabuç

Referans Nr.	L	b1	metrik		a	b2	b3	b4	(g)		
			metrik	whitworth							
1390-06060	60	6,6	M6	1/4	12	19	6	3	60		
1390-08080	80	9	M8	5/16	15	25	8	4	140		
1390-10100	100	11	M10	3/8	20	31	10	5	300		
1390-12125	125	14,5	M12-M14	1/2	25	38	12	6	570		
1390-12160	160								730		
1390-12200	200								910		
1390-16160	160	18,5	M16-M18	5/8	30	48	15	8	1080		
1390-16200	200				1360						
1390-16250	250				2250						
1390-20200	200	22,5	M20-M22	3/4	40	52	15	10	1800		
1390-20250	250				40	62	20		3000		
1390-20315	315				40	62	20		3850		
1390-20500	500				40	62	20		7500		
1390-24200	200	26	M24	1	40	66	20	10	2400		
1390-24250	250				40				66	20	3000
1390-24315	315				40				66	20	3850
1390-24500	500				40				66	20	7600
1390-30250	250	33	M30	1 1/4	50	74	20	12	3700		
1390-30315	315				50	74	20		4750		
1390-30400	400				50	74	20		6100		
1390-30600	600				50	74	20		9200		
1390-301000	1000				60	94	30		28000		
1390-36400	400	40	M36	1 1/2	60	100	30	12	11000		
1390-36600	600				60	100	30		16500		
1390-42600	600	43	M42	1 1/2	80	123	40	12	29600		



Ürün Nr. 1390 Çatal Pabuç

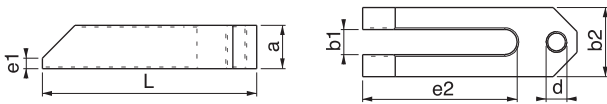


Kademeli Destek Delikli Çatal Pabuç

Referans Nr.	L	b1	metrik		a	e2	a1xa2	b2	d	(g)
			metrik	whitworth						
1400-10100	100	11	M10	3/8	20	70	10x10	30	M10	300
1400-12125	125	14,5	M12-14	1/2	25	90	12x12	40	M12	600
1400-16160	160	18,5	M16-18	5/8	30	110	15x15	50	M16	1200
1400-20200	200	22,5	M20-22	3/4	40	135	20x20	60	M20	2900



Ürün Nr. 1400 Kademeli Destek Delikli Çatal Pabuç

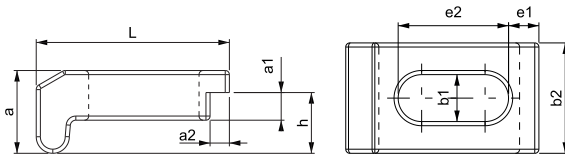


Destek Delikli Çatal Pabuç

Referans Nr.	L	b1	metrik		a	e1	e2	b2	d	(g)
			metrik	whitworth						
1410-10100	100	11	M10	3/8	20	5	70	30	M10	300
1410-12125	125	14,5	M12-M14	1/2	25	6	90	40	M12	600
1410-16160	160	18,5	M16-M18	5/8	30	8	110	50	M16	1200
1410-20200	200	22,5	M20-M22	3/4	40	10	135	60	M20	2900

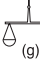


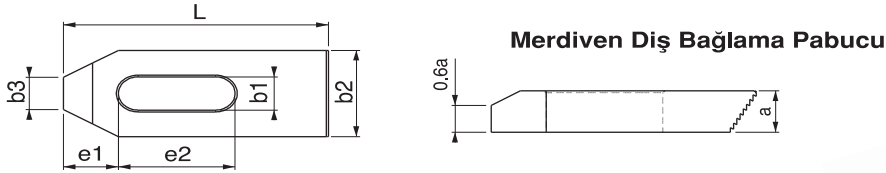
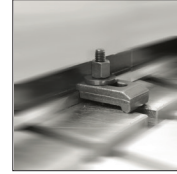
Ürün Nr. 1410 Destek Delikli Çatal Pabuç




Plaka Sıkma Pabucu



Referans Nr.	L	b1	metrik		a	b2	a1xa2	e1	e2	h	
				whitworth							
1387-12070	70	13	M12	1/2	22	40	8x6	11	40	14	300
1387-16070	70	17	M16	5/8	30	40	10x7	11	40	22	350

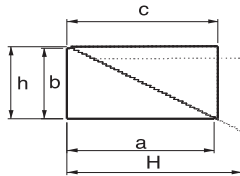


Merdiven Dış Bağlama Pabucu


Referans Nr.	L	b1	metrik		a	b2	b3	e1	e2	
				whitworth						
1290-06050	50		M6	1/4	10	20	8	10	20	50
1290-06080	80	6.6	M6	1/4	10	20	8	10	30	80
1290-08060	60		M8	5/16	12	25	10	13	22	90
1290-08100	100	9	M8	5/16	12	25	10	13	45	170
1290-10080	80		M10	3/8	15	30	12	15	30	190
1290-10100	100	11	M10	3/8	15	30	12	15	45	340
1290-12100	100		M12-M14	1/2	20	40	14	21	45	450
1290-12125	125	14.5	M12-M14	1/2	20	40	14	21	55	600
1290-16125	125		M16-M18	5/8	25	50	18	26	55	800
1290-16160	160	18.5	M16-M18	5/8	25	50	18	26	65	1400

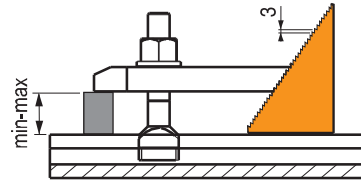


Ürün Nr. 1290 Merdiven Dış Bağlama Pabucu

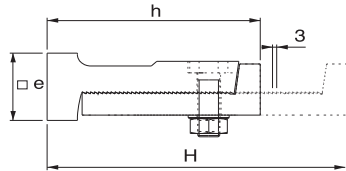


Merdiven Dış Destek



Referans Nr.	h-H	a	b	c	min-max	
1310-01	37-85	57	35	60	0-40	490
1310-02	48-112	73	45	76	0-60	780
1310-03	58-139	90	55	93	0-75	1160
1310-04	66-165	108	64	111	0-90	1500

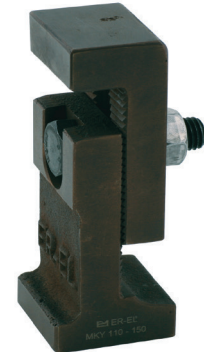


Ürün Nr. 1310 Merdiven Dış Destek



Merdiven Dış Kombine Destek

Referans Nr.	h-H	e	 kgf	
1585-050	110-150	50	4000	1300
1585-060	155-220	60	5000	2600
1585-080	220-340	80	6000	6000

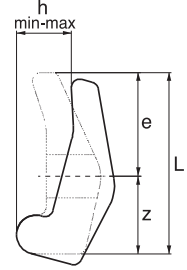
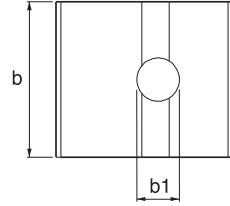


Ürün Nr. 1585 Merdiven Dış Kombine Destek



"L" pabuç

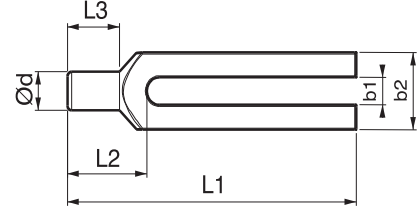
Referans Nr.	b1	metrik	h min - max	e	z	L	b	(g)
1430-013	13	M10-M12	3-12	23	20	43	36	150
1430-025	25	M22-M24	3-30	46	40	86	75	1000



Ürün Nr. 1430 "L" pabuç

Silindir Başlı Çatal Pabuç

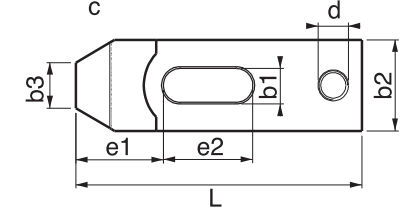
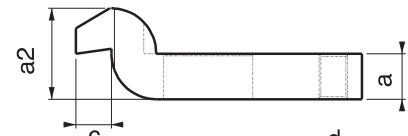
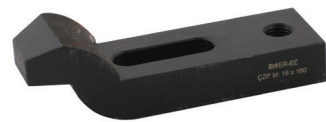
Referans Nr.	L1	b1	metrik		a	b2	ød	L2	L3	(g)
			whitworth							
1470-08100	100	9	M8	5/16	15	30	12	30	18	220
1470-10125	125	11	M10	3/8	20	30	16	36	24	350
1470-12160 1470-12200	160 200	14.5	M12-M14	1/2	25	40	20	45	30	770 980
1470-16200 1470-16250	200 250	18.5	M16-M18	5/8	30	50	24	55	36	1450 1750
1470-20250 1470-20315	250 315	22.5	M20-M22	3/4	40	60	30	65	45	2750 3450
1470-24250 1470-24315	250 315	26	M24	1	40	70	38	80	56	3200 4100
1470-30315 1470-30400	315 400	34	M30	1 1/4	50	80	45	85	56	5700 7000



DIN 6315C Ürün Nr. 1470 Silindir Başlı Çatal Pabuç

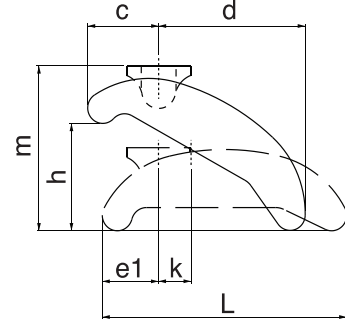
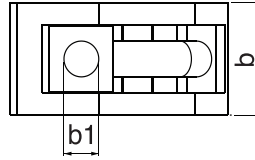
Destek Delikli "Z" Bağlama Pabucu



Referans Nr.	L	b1	metrik		a	b2	b3	c	e1	e2	d	(g)
			whitworth									
1450-06060	60	6.6	M6	1/4	10	20	10	8	20	20	M8	80
1450-08080	80	9	M8	5/16	12	25	12	9	25	25	M8	160
1450-10100	100	11	M10	3/8	15	30	15	12	32	32	M10	300
1450-12125	125	14.5	M12-M14	1/2	20	40	20	16	40	40	M12	570
1450-16125 1450-16160	125 160	18.5	M16-M18	5/8	25	50	25	20	49	40 50	M16	980 1150
1450-20160 1450-20200	160 200	22.5	M20-M22	3/4	30	60	30	24	55	55 70	M20	1800 2150
1450-24160 1450-24200 1450-24250	160 200 250	26	M24	1	35	70	35	28	53 72 72	55 60 80	M24	2100 2560 3100
1450-30250 1450-30315	250 315	33	M30	1 1/4	40 50	80	40	40	91	80 100	M24	5400 9000

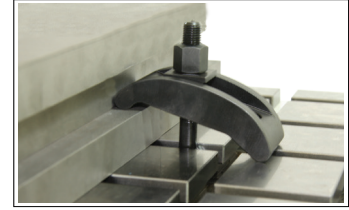


DIN 6316 Ürün Nr. 1450 Destek Delikli "Z" Bağlama Pabucu

Kademeli Bağlama Pabucu

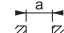




Referans Nr.	b1		m	h	b x L	c	d	e1	k	
1210-013	13	M10-M12	52	0-40	40x90	28	48	23	14	275
1210-017	17	M14-M16	80	0-60	58x130	38	74	29	18	790
1210-021	21	M18-M20	98	0-75	68x140	46	80	32	20	1200
1210-025	25	M22-M24	110	0-90	78x175	52	100	39	24	1700



Ürün Nr. 1210 Kademeli Bağlama Pabucu

Kademeli Bağlama Pabucu

Referans Nr.	b1			m	h	b x L	c	d	e1	k	
1205-017	17	16-18	-	93	15-50	65x165	39	128	30	17	2.10
1205-021	21	20-22	-	111	20-65	75x189	43	146	33	19	3.20
1205-025	25	24-28	-	126	20-75	85x213	49	164	39	21	4.50
1205-031	31	36	-	143.5	20-85	95x238	56	182	46	23	6.30
1205-016	17	16	M16x16x125	93	15-50	65x165	39	128	30	17	2.50
1205-018	17	18	M16x18x125	93	15-50	65x165	39	128	30	17	2.50
1205-020	21	20	M20x20x160	111	20-65	75x189	43	146	33	19	3.90
1205-022	21	22	M20x22x160	111	20-65	75x189	43	146	33	19	3.90
1205-024	25	24	M24x24x200	126	20-75	85x213	49	164	39	21	5.70
1205-028	25	28	M24x28x200	126	20-75	85x213	49	164	39	21	5.70
1205-036	31	36	M30x36x250	143.5	20-85	95x238	56	182	46	23	8.80

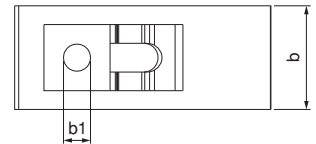
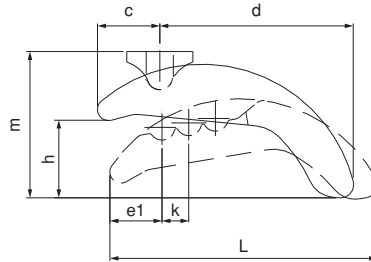


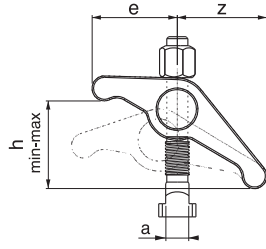
Ürün Nr. 1205 Kademeli Bağlama Pabucu

- Destek kullanmadan 15-85mm arası kullanım imkanı sağlar
- Malzeme: Ck45 DIN Dövme Çelik
- Sertlik: 32-35 HRC
- Siyah kaplama

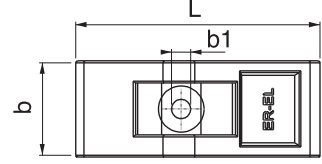
Product Nr. 1205 Stepped Coupling Clamp

- It provides using between 15-85 mm without supporting.
- Material: Ck45 DIN Forged Steel
- Hardness: 32-35 HRC
- Black coated





**Desteksiz
Askı Pabuç**



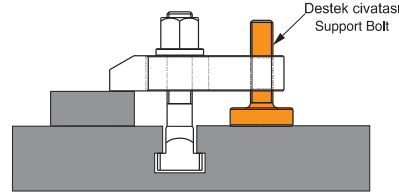
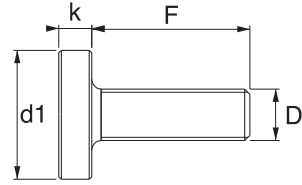
Referans Nr.	a	h min-max	b1	e	z	L	b	(g)
1270-1012	12	0-45	11	48	61	109	40	710
1270-1214	14	0-45	13	48	61	109	40	710
1270-1416	16	0-55	15	57	72	129	50	1200
1270-1618	18	0-55	17	57	72	129	50	1200



Ürün Nr. 1270 Desteksiz Askı Pabuç

Pabuç Destek Civatası

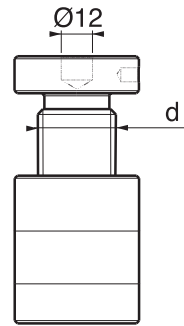
Referans Nr.	D x F	d1	k	(g)
1490-10042	M10x42	30	8	60
1490-12050	M12x50	36	10	100
1490-12095	M12x95	36	10	150
1490-16062	M16x62	45	13	200
1490-16097	M16x97	45	13	250
1490-16117	M16x117	45	13	300
1490-20062	M20x62	50	13	340
1490-20097	M20x97	50	13	400
1490-20117	M20x117	50	13	430
1490-24081	M24x81	50	14	600
1490-24116	M24x116	50	14	850



Ürün Nr. 1490 Pabuç Destek Civatası

Trapez Diş Yükseltici Destek

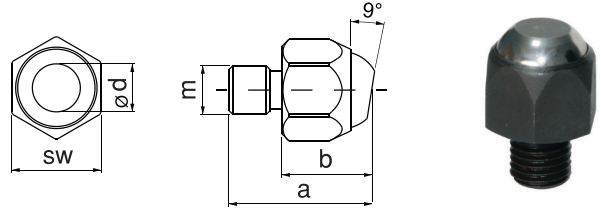
Referans Nr.	d	d	kgf	(g)		
1510-023030	23-30	M16	34	32	1000	140
1510-040060	40-60	M16	34	32	1800	250
1510-042052	42-52	Tr 30x4	50	50	6000	550
1510-050070	50-70	Tr 30x4	50	50	6000	620
1510-070100	70-100	Tr 30x4	50	50	6000	900
1510-100140	100-140	Tr 30x4	50	50	6000	1600
1510-140220	140-220	Tr 30x4	54	54	6000	2400
1510-210330	210-330	Tr 30x6	58	58	5000	3900
1510-260430	260-430	Tr 30x6	68	68	4000	6700



Ürün Nr. 1510 Trapez Diş Yükseltici Destek

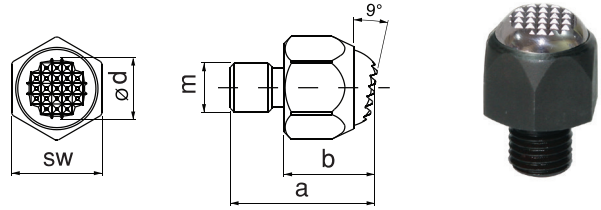
Oynar Başlı Baskı Pabucu

Referans Nr.	a	b	m	d	sw	(g)
1282-0825	25	12	M8	8	14	20
1282-1030	30	16	M10	10	17	30
1282-1235	35	22	M12	12	22	70
1282-1642	42	26	M16	14	27	140

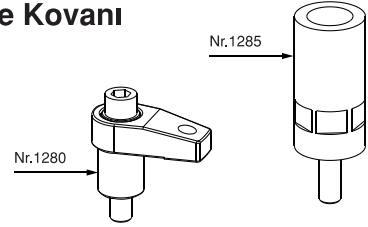
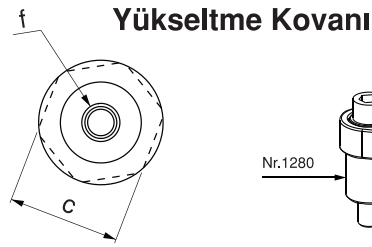
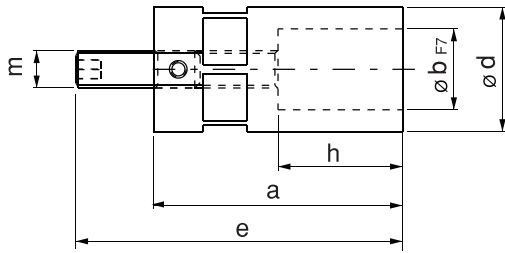


Ürün Nr. 1282 Oynar Başlı Baskı Pabucu

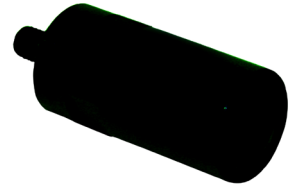
Referans Nr.	a	b	m	d	sw	(g)
1283-0825	25	12	M8	8	14	20
1283-1030	30	16	M10	10	17	30
1283-1235	35	22	M12	12	22	70
1283-1642	42	26	M16	14	27	140



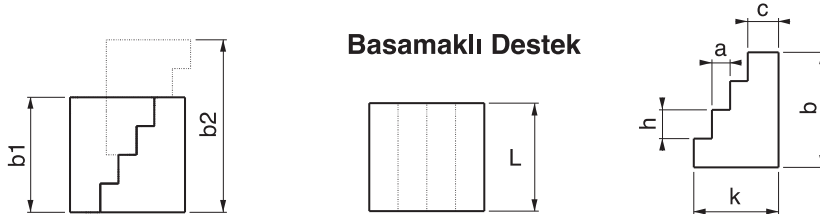
Ürün Nr. 1283 Oynar Başlı Baskı Pabucu



Referans Nr.	a	b F7	c	d	e	f	m	h	(g)
1285-12080	80	26	36	40	110	M12	M12	40	600
1285-12100	100	26	36	40	130	M12	M12	40	800
1285-16080	80	32	46	50	110	M16	M16	40	830
1285-16100	100	32	46	50	130	M16	M16	40	1200



Ürün Nr. 1285 Yükseltme Kovanı



Basamaklı Destek

Referans Nr.	h	a	c	k	b	L	b1	b2	(g)
1580-050	13	8	13	37	52	50	52	78	480
1580-060	16	10	17	47	64	60	64	96	880
1580-070	19	13	18	57	76	70	76	114	1400

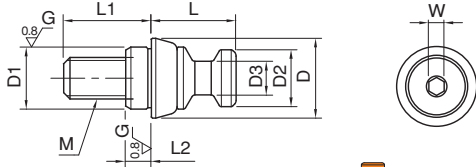


Ürün Nr. 1580 Basamaklı Destek

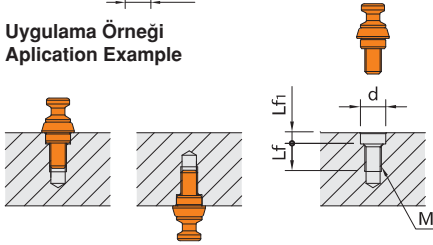
Referans Nr.	M	D1 (g6)	L2	L1	D	L	D2	D3	W	$\frac{1}{g}$
0950-08061L	M6	10	5	17	15.5	16.5	11	6.5	3	17
0950-08000L	M8	12	5	17	15.5	16.5	11	6.5	3	20
0950-12081L	M8	12	5	17	24.5	25	16	9.5	5	52
0950-12001L	M12	18	6	24	24.5	25	16	9.5	5	70

Ürün Nr. 0950 5-Eksen Blok Bağlama Çektirme Civatası
• Tolerans ± 0.02

Product Nr. 0950 5-Axis Clamping Block Puller Bolt
• Tolerance ± 0.02

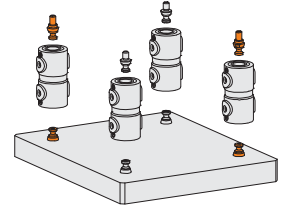
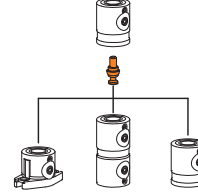
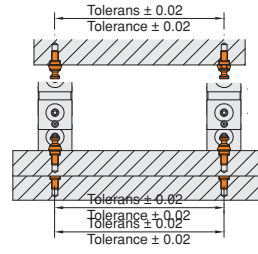


Uygulama Örneği
Application Example



Referans Nr.	d (H7)	Lf	Lf1	M
0950-08061L	10	13	5.5	M6
0950-08000L	12	13	5.5	M8
0950-12081L	12	13	5.5	M8
0950-12001L	18	19	6.5	M12

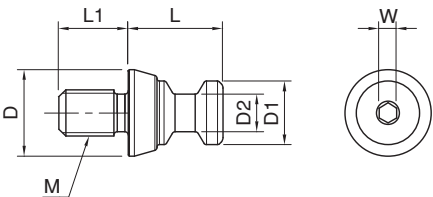
5-Eksen Blok Bağlama Çektirme Civatası



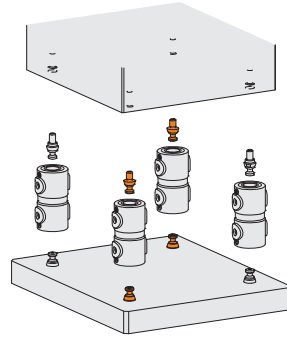
Referans Nr.	M	L1	D	L	D1	D2	W	$\frac{1}{g}$
0950-08061M	M6	9	15	16.5	11	6.5	3	13
0950-08001M	M8	12	15	16.5	11	6.5	3	16
0950-12081M	M8	12	24	25	16	9.5	5	46
0950-12001M	M12	18	24	25	16	9.5	5	57

Ürün Nr. 0950 5-Eksen Blok Bağlama Çektirme Civatası
• Tolerans ± 0.2

Product Nr. 0950 5-Axis Clamping Block Puller Bolt
• Tolerance ± 0.2



5-Eksen Blok Bağlama Çektirme Civatası

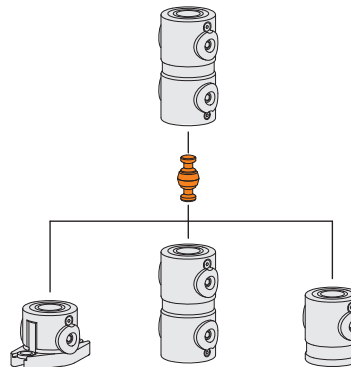
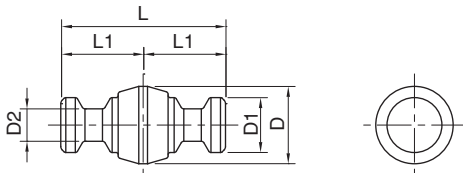


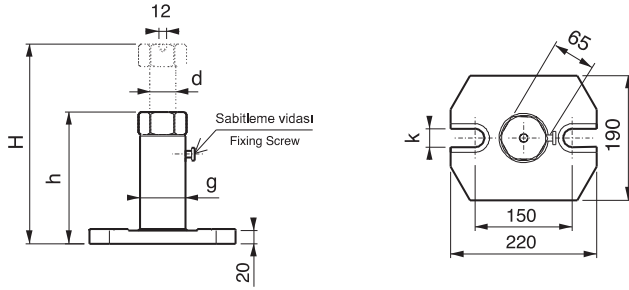
5-Eksen Blok Bağlama Çektirme Civatası

Referans Nr.	D	L	D1	D2	L1	$\frac{1}{g}$
0950-08001	15.5	33	11	6.5	16.5	24
0950-12001	24.5	50	16	9.5	25	85

Ürün Nr. 0950 5-Eksen Blok Bağlama Çektirme Civatası
• Tekrarlama Konumlama 0.2

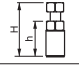


Product Nr. 0950 5-Axis Clamping Block Puller Bolt
• Locating Repeatability is 0.2



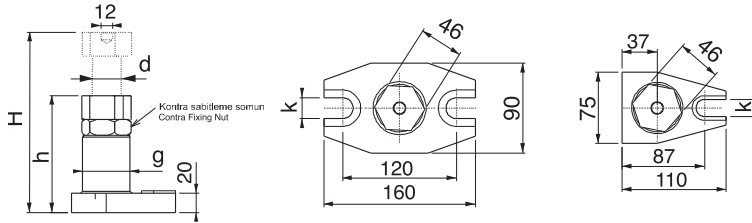


Trapez Diş Yükseltici Destek



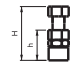


Referans Nr.		d	g	k	 kgf	 (g)
1530-200	200-300	Tr40x7	70	26	8000	8000
1530-280	280-460	Tr40x7	70	26	6000	12000
1530-430	430-750	Tr40x7	70	26	5000	12600
1530-710	710-1250	Tr40x7	70	26	4000	16500

Ürün Nr. 1530 Büyük Boy Yükseltici Destek



Trapez Diş Yükseltici Destek

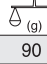


Referans Nr.		d	g	k	 kgf	 (g)
1550-100	100-140	Tr30x6	50	18	6000	1750
1550-140	140-200	Tr30x6	50	18	6000	2200
1550-200	200-320	Tr30x6	50	22	4000	3400
1550-320	320-550	Tr30x6	50	22	2500	4850

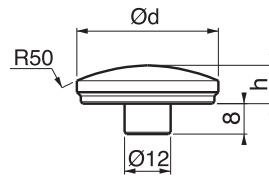
Ürün Nr. 1550 Büyük Boy Yükseltici Destek

Trapez Diş Yükseltici Yedek Parçaları


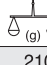
Radüslü Destek

Referans Nr.	h	Ø d	 (g)
1555	10	37	90

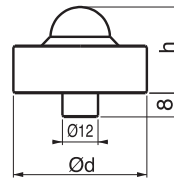
Ürün Nr. 1555 Trapez Diş Yükseltici Radüslü Destek



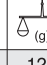
Bilyalı Destek

Referans Nr.	h	Ø d	 kgf	 (g)
1560	25	45	3000	210

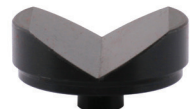
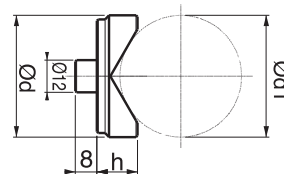
Ürün Nr. 1560 Trapez Diş Yükseltici Bilyalı Destek



"V" Yatak

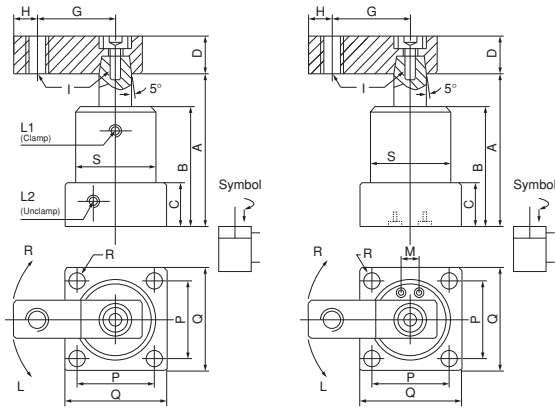
Referans Nr.	h	Ø d	min	max	 (g)
1565	15	45	10	50	120

Ürün Nr. 1565 Trapez Diş Yükseltici "V" Yatak



Pnömatik Dönmeli Bağlama

Referans Nr.	Bağlama Tipi Mounting Type	Bağlama Kolu Clamping Arm	Max. Basınç Max. Pressure	Normal Basınç Normal Pres.	Hareket Tipi Acting Type	Dönme Açısı Swivel Angle	Dönme Strok Swivel Stroke (mm)	Bağlama Strok Clamp. Str. (mm)	Delik Çapı / Bore Diameter Ø (mm)	Piston Çubuğu Piston Rod Ø	Bağl. Gücü/Clamp Force (kg/cm ²)	A (mm) Sökme Unclamp	B (mm)	C (mm)	D (mm)	G (mm)	H (mm)	L1 Bağlama / Clamp L2 Sökme / Unclamp	I (mm)	P (mm)	Q (mm)	R (mm)	S (mm)	M (mm)	F (mm)	Ağırlık Weight (kg)					
1058-NAS025	Flanş / Bottom Flange	Tel Kol / Single Arm	7 kg/cm ²	4-6 kg/cm ²	Çift Hareketli / Double Acting	90° (0°-45°, 60°, 180°) ± 2°	12	14	25	14	16	95.5	65.5	23	□	16	30	8	M5	M6	30	40	Ø	Ø	18	12.5	0.40				
1058-NAS032							12	14	32	16	30	102.5	71	23	□	19	50	9	1/8	PF	M8	44	54	Ø	Ø	6.5	Ø	50	22	17	0.70
1058-NAS040							12	15	40	16	50	106	75	26	□	19	50	9	1/8	PF	M8	48	58	Ø	Ø	6.5	Ø	55	26	19.5	0.85
1058-NAS050							14	15	50	20	85	113	80	26	□	25.4	70	10	1/8	PF	M10	55	68	Ø	Ø	8.5	Ø	65	30	24	1.30
1058-NAS063							14	15	63	20	140	119	86	30	□	25.4	70	10	1/8	PF	M10	64	80	Ø	Ø	8.5	Ø	70	40	20	1.80
							14	15	63	20	140	119	86	30	□	25.4	70	10	1/8	PF	M10	64	80	Ø	Ø	8.5	Ø	70	40	20	1.80



Ürün Nr. 1058 Pnömatik Dönmeli Bağlama
Product Nr. 1058 Pneumatic Swing Clamp

NAS – Flanşlı Uyarlama, Tek Kol
Borulu veya Manifoldlu

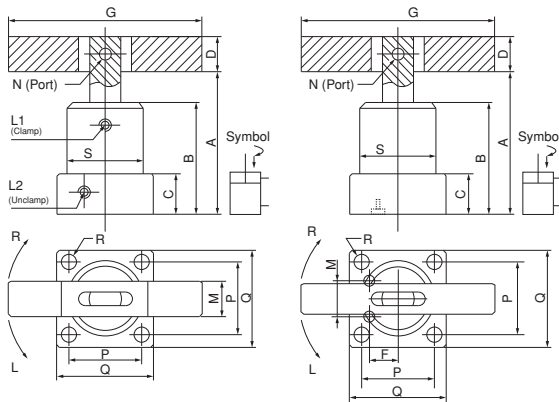
NAS – Flange Version, Single Arm
With Pipe or the Manifold

- Satın almadan önce hareket tipini ve dönme açısını bildiriniz.
- Before buying please, movement indicate the type and rotation angle.



Pnömatik Dönmeli Bağlama

Referans Nr.	Bağlama Tipi Mounting Type	Bağlama Kolu Clamping Arm	Max. Basınç Max. Pressure	Normal Basınç Normal Pres.	Hareket Tipi Acting Type	Dönme Açısı Swivel Angle	Dönme Strok Swivel Stroke (mm)	Bağlama Strok Clamp. Str. (mm)	Delik Çapı / Bore Diameter Ø (mm)	Piston Çubuğu Piston Rod Ø	Bağl. Gücü/Clamp Force (kg/cm ²)	A (mm) Sökme Unclamp	B (mm)	C (mm)	D (mm)	G (mm)	H (mm)	L1 Bağlama / Clamp L2 Sökme / Unclamp	N (mm)	P (mm)	Q (mm)	R (mm)	S (mm)	M (mm)	F (mm)	Ağırlık Weight (kg)					
1058-NASD032	Flanş / Bottom Flange	Çift Kol / Double Arm	7 kg/cm ²	4-6 kg/cm ²	Çift Hareketli / Double Acting	90° (0°-45°, 60°, 180°) ± 2°	12	14	32	16	30	102.5	71	23	□	19	100	1/8	Ø	Ø	44	54	Ø	Ø	22	17	0.80				
1058-NASD040							12	15	40	16	50	106	75	26	□	19	100	1/8	Ø	Ø	8	48	58	Ø	Ø	6.5	Ø	55	26	19.5	0.95
1058-NASD050							14	15	50	20	85	113	80	26	□	22	120	1/8	Ø	Ø	8	55	68	Ø	Ø	8.5	Ø	65	30	24	1.40
1058-NASD063							14	15	63	25	140	119	86	30	□	22	120	1/8	Ø	Ø	8	64	80	Ø	Ø	8.5	Ø	75	40	29	1.90



Ürün Nr. 1058 Pnömatik Dönmeli Bağlama
Product Nr. 1058 Pneumatic Swing Clamp

NASD – Flanşlı Uyarlama, Çift Kol
Borulu veya Manifoldlu

NASD – Flange Version, Double Arms
With Pipe or the Manifold

- Satın almadan önce hareket tipini ve dönme açısını bildiriniz.
- Before buying please, movement indicate the type and rotation angle.



Pnömatik Üstten Bağlama

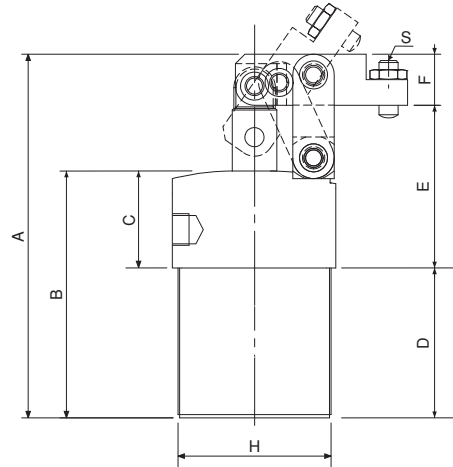
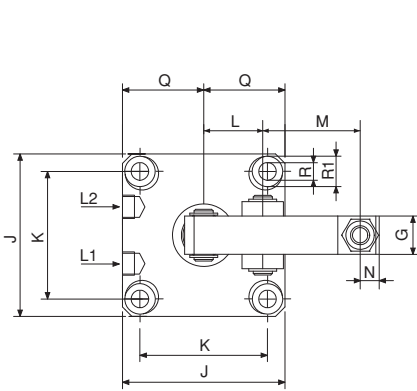
Referans Nr.	Çalışma Basıncı Operating Pressure	Çalışma Isısı Temperature Range	Bağlama Tipi Mounting Type	Strok Stroke (mm)	Delik Çapı / Bore Diameter Ø (mm)	Piston Çubuğu Piston Rod Ø (mm)	A	B	C	D	E	F	G	H	I	J	K	L	M	O	N	P	Q	R	R1	S	L1 Bağlama / Clamp L2 Sökme / Uncclamp	Ağırlık Weight (kg)
							Üst Flans ve Dişli Gövde Upper Flange & Threaded Body	22	Ø 25	Ø 14	128.5	86.5	25	61.5	50	17	16	M40 x1.5	60	50	37	18	23	23	7	35		
1058-PLCU25	4-10 kg/cm ²	-10° - +80°	Üst Flans ve Dişli Gövde Upper Flange & Threaded Body	22	Ø 25	Ø 14	128.5	86.5	25	61.5	50	17	16	M40 x1.5	60	50	37	18	23	23	7	35	25	5.5	9	M6 x1	M5 x0.8	0.60
1058-PLCU32				28	Ø 32	Ø 16	149.5	97.5	25	72.5	57	20	18	M50 x1.5	70	60	45	22	30	23	8	40	30	6.5	11	M8 x1.25	G 1/8	1.00
1058-PLCU40				30	Ø 40	Ø 16	157.5	97.5	25	72.5	60	25	20	M55 x1.5	75	65	50	24	32	26	10	42.5	32.5	6.5	11	M8 x1.25	G 1/8	1.20
1058-PLCU50				30	Ø 50	Ø 20	174	104	25	79	65	30	22	M65 x1.5	88	75	58	27.5	36	32	14	50.5	37.5	8.5	14	M12 x1.75	G 1/8	2.00
1058-PLCU63				30	Ø 63	Ø 20	179	105	25	80	69	30	22	M80 x1.5	108	90	70	32	42	35	14	63	45	8.5	14	M12 x1.75	G 1/8	2.70

Ürün Nr. 1058 Pnömatik Üstten Bağlama


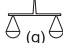
Product Nr. 1058 Pneumatic Above Clamp



Borulu / With Pipe





Merdiven Yükselticili Bağlama Set

Referans Nr.	dx			DIN 6379
2010-1012	M10X12	330X255	6000	M10X80-100-160-200
2010-1214	M12X14	380X255	8000	M10X80-100-160-200
2010-1416	M14X16	435X255	13500	M14X80-100-160-200
2010-1618	M16x18	435X255	15000	M16x80-100-160-200
2010-1820	M18X20	495X255	16500	M18X80-100-160-200



Ürün Nr. 2010 Merdiven Yükselticili Bağlama Set

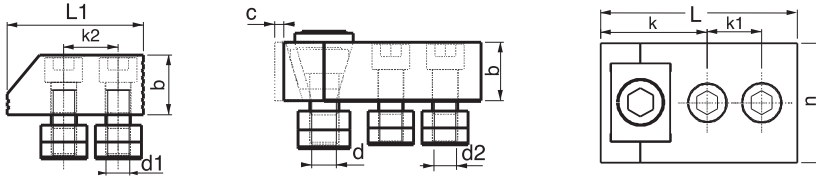
Vidalı Yükselticili Bağlama Set


Referans Nr.	dx			DIN 6379
1990-1012	M10x12	265x255	6000	M10x80-100-160-200
1990-1214	M12x14	305x255	8000	M12x80-100-160-200
1990-1416	M14x16	435-255	13500	M14x80-100-160-200
1990-1618	M16x18	435-255	15000	M16x80-100-160-200
1990-1820	M18x20	495x255	16500	M18x80-100-160-200
1990-2022	M20x22	540x255	18500	M20x100-125-160-200



Ürün Nr. 1990 Vidalı Yükselticili Bağlama Set

Dereceli Yandan Sıkma Set

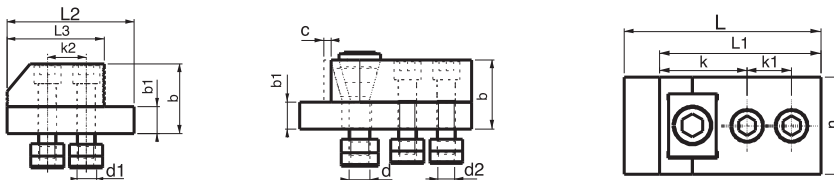


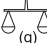
Referans Nr.	a	c	L	b	n	k	k1	k2	L1	d	d1	d2	sıkma kuvveti clamping force kgf	
2030-14	14	5	90	23	47	47	26	26	65	M12	M12	M12	2000	3600
2030-16	16													
2030-18	18													
2030-20	20													
2030-22	22	5	95	28	57	52	26	26	65	M14	M12	M12	2500	4200
2030-24	24													
2030-28	28													



Ürün Nr. 2030 Dereceli Yandan Sıkma Set

Dereceli Yandan Sıkma (Paralelli) Set

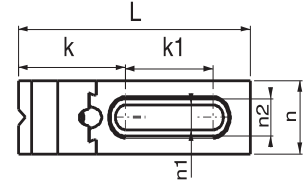
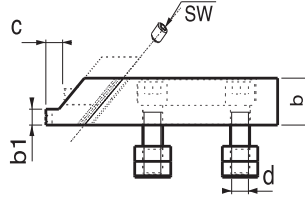
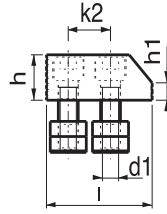




Referans Nr.	a	c	L	L1	L2	L3	b	b1 ±0,01	n	k	k1	k2	d	d1	d2	sıkma kuvveti clamping force kgf	
2050-14	14	5	110	90	85	65	41	18	47	47	26	26	M12	M12	M12	2000	7000
2050-16	16																
2050-18	18																
2050-20	20																
2050-22	22	5	115	95	85	65	46	18	57	52	26	26	M14	M12	M12	2500	8800
2050-24	24																
2050-28	28																



Ürün Nr. 2050 Dereceli Yandan Sıkma (Paralelli) Set

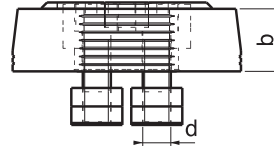
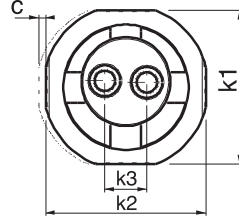
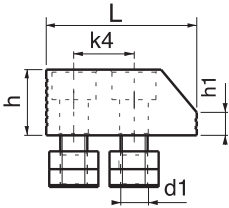
Kızaklı Yandan Sıkma Set


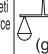


Referans Nr.		c	L	b	b1	n	n1	n2	k	k1	k2	sw	l	h	h1	d	d1	sıkma kuvveti clamping force kgf	
2070-14	14	10	142	23	8	37	12.5	19	65	54	26	6	65	23	10	M12	M12	600	3650
2070-16	16	10	142	23	8	37	12.5	19	65	54	26	6	65	23	10	M12	M12	600	3650
2070-18	18	14	145	28	10	48	12.5	19	74	54	26	8	65	28	11	M12	M12	800	4300
2070-20	20	14	145	28	10	48	12.5	19	74	54	26	8	65	28	11	M12	M12	800	4300
2070-22	22	14	145	28	10	48	12.5	19	74	54	26	8	65	28	11	M12	M12	800	4300

Ürün Nr. 2070 Kızaklı Yandan Sıkma Seti



Kollu Yandan Sıkma Set



Referans Nr.		c	b	k1	k2	k3	k4	L	h	h1	d	d1	sıkma kuvveti clamping force kgf	
2090-14	14	3.5	30	95	99	26	26	65	28	10	M12	M12	3500	7608
2090-16	16													7630
2090-18	18													7660
2090-20	20													7710
2090-22	22													7770
2090-24	24													7870
2090-28	28													7990

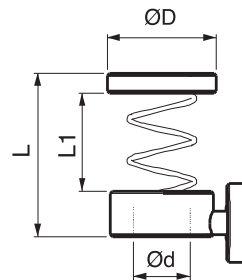


Ürün Nr. 2090 Kollu Yandan Sıkma Set

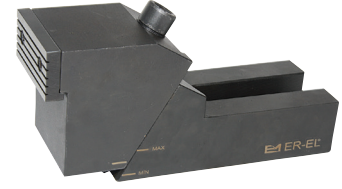
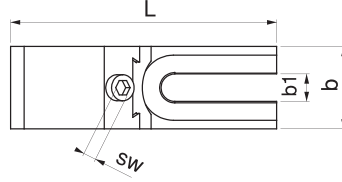
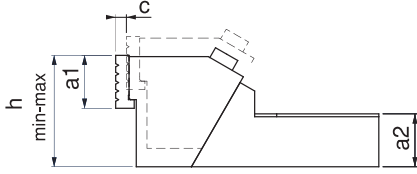
Referans Nr.		Ø D	Ø d	L	L1	
1970-10	M10	27	11	35	20	75
1970-12	M12	28	13	40	33	78
1970-14	M14	28	15	40	30	80
1970-16	M16	37	17	45	30	122
1970-18	M18	37	19	45	40	125
1970-20	M20	37	21	45	42	130
1970-22	M22	37	23	45	45	135
1970-24	M24	45	25	50	45	180

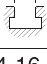

Ürün Nr. 1970 Pabuç Kaldırma Yaylı Pul

Pabuç Kaldırma Yaylı Pul



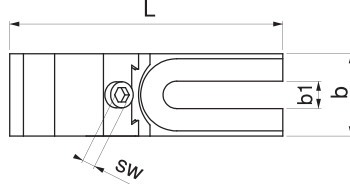
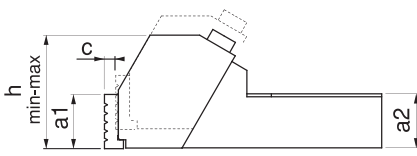
Blok Yandan Sıkma

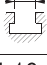
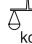


Referans Nr.		a1	a2	b	b1	c	h min-max	L	SW	F1 Sıkma kuvveti Clamping force kgf	F2 Sıkma kuvveti Clamping force kgf	 kg
2095-571	14-16-18	37	37	57	19	8	78-98	185	10	2200	350	3.7
2095-761	20-22-24-28	37	45	76	26	11	98-118	240	14	3400	450	7.9

Ürün Nr. 2095 Blok Yandan Sıkma

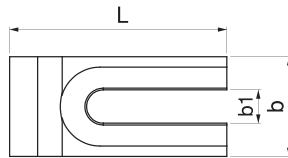
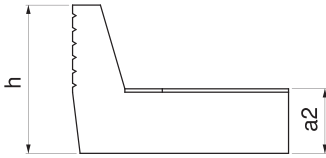
Blok Yandan Sıkma

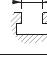



Referans Nr.		a1	a2	b	b1	c	h min-max	L	SW	F1 Sıkma kuvveti Clamping force kgf	F2 Sıkma kuvveti Clamping force kgf	 kg
2095-572	14-16-18	37	37	57	19	8	78-98	185	10	2200	350	3.3
2095-762	20-22-24-28	37	45	76	26	11	98-118	240	14	3400	450	6.7

Ürün Nr. 2095 Blok Yandan Sıkma

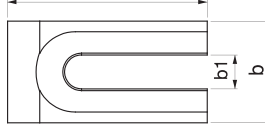
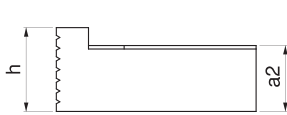
Blok Yandan Sıkma Dayamaşı

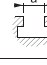



Referans Nr.		a2	b	b1	h	L	 kg
2098-571	14-16-18	37	57	19	85	124	2
2098-761	20-22-24-28	45	76	26	105	154	3.7

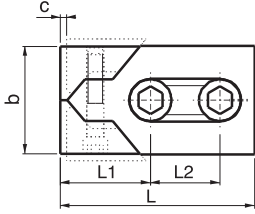
Ürün Nr. 2098 Blok Yandan Sıkma Dayamaşı

Blok Yandan Sıkma Dayamaşı



Referans Nr.		a2	b	b1	h	L	 kg
2098-572	14-16-18	37	57	19	47	112	1.4
2098-762	20-22-24-28	45	76	26	49	140	2.5

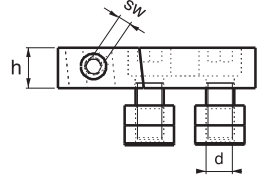
Ürün Nr. 2098 Blok Yandan Sıkma Dayamaşı



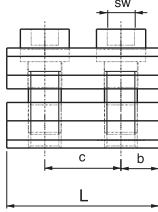
Çift Çeneli Yandan Sıkma Pabucu



Referans Nr.	a	c	h	b	L	L1	L2	sw	d	Sıkma Kuvveti Clamping Force		(g)
										f1 kgf	f2 kgf	
2110-12	12	3	20	40	80	39	26	6	M10	1600	60	560
2110-14	14								M12	2200	90	610
2110-16	16								M14	3200	120	1200
2110-18	18	4	25	50	100	46	34	8	M16	3600	140	1300
2110-20	20								M16	3600	140	1325
2110-22	22								M20	3600	140	2995
2110-24	24	5	30	78	140	65	50	10	M20	3600	140	3200
2110-28	28								M24	4000	160	3600



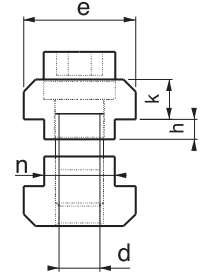
Ürün Nr. 2110 Çift Çeneli Yandan Sıkma



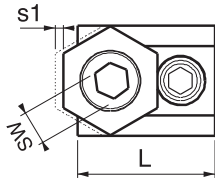
Dayama



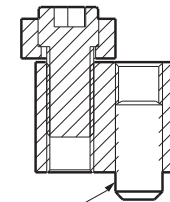
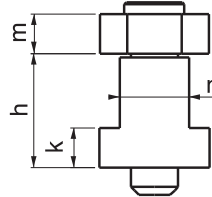
Referans Nr.	a	n	e	c	d	b	h	k	L	sw	(g)
2130-14	14	13.7	22	22	M8	11	4	8	44	6	140
2130-16	16	15.7	25	25	M12	12.5	5	9	50	10	240
2130-18	18	17.7	28	28	M12	14	5	10	56	10	340
2130-20	20	19.7	32	32	M16	16	5	12	64	14	520
2130-22	22	21.7	35	35	M16	17.5	6	14	70	14	720
2130-24	24	23.7	40	40	M20	20	6	16	80	17	880
2130-28	28	27.7	44	44	M20	22	6	18	88	17	1450



Ürün Nr. 2130 Dayama



Kanal İçi Yandan Sıkma



Referans Nr.	a	s1	m	sw	L	h	k	n	sıkma kuvveti clamping force kgf	(g)
2150-10	10	1.4	5	4	23	14	5	9.7	310	35
2150-12	12	1.2	5	5	28	15	6	11.7	340	60
2150-14	14	1.7	7	8	30	22	8	13.7	800	95
2150-16	16	2	10	8	30	22	9	15.7	1500	130
2150-18	18	2	10	8	35	28	10	17.7	1500	190
2150-20	20	2.5	13	10	40	32	12	19.7	2000	290
2150-22	22	2.5	13	12	45	38	14	21.7	2000	390

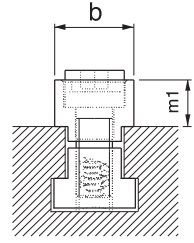
SABİTLEME
CIVATASI

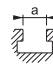
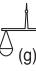


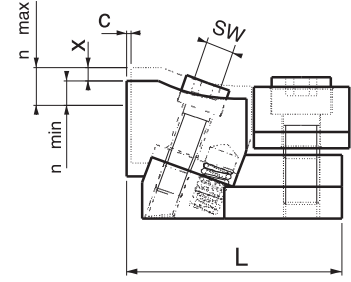
Ürün: Nr. 2150 Kanal İçi Yandan Sıkma



Yandan Sıkma Pençe Pabuç

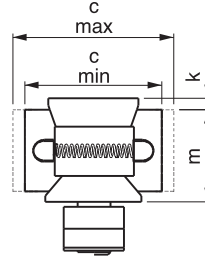
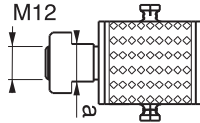
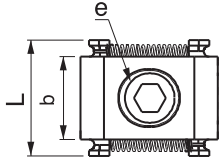


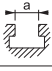

Referans Nr.		c	n		x	L	b	m1	sw	sıkma kuvveti clamping force		
			min	max						f1 kgf	f2 kgf	
2170-12	12	2	2	6	4	46	18	7	5	500	60	120
2170-14	14	2.5	2.5	7.5	5	51	22	8	6	550	70	200
2170-16	16	3	2.5	8.5	6	61	25	9	6	800	90	290
2170-18	18	3	2	8	6	67	28	10	8	900	100	440
2170-20	20	4	2.5	11	8.5	78	32	12	10	1200	140	650
2170-22	22	4.5	2.5	12	9.5	87	35	14	10	1600	190	840



Ürün Nr. 2170 Yandan Sıkma Pençe Pabuç

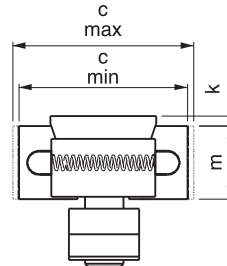
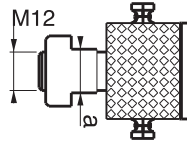
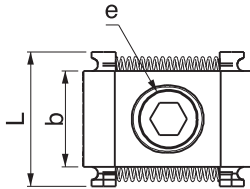
Çift Açılır Yandan Sıkma

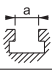



Referans Nr.	c			m	k	b	L	e DIN 912	sıkma kuvveti clamping force kgf	
	min	max								
2190-5055	50	55	(a) 14-16-18-20-22 "T" kanallarda çalışır It is used in "T" Slot	35	4	30	42	M12	3000	350

Ürün Nr. 2190 Çift Açılır Yandan Sıkma

Çift Açılır Yandan Sıkma

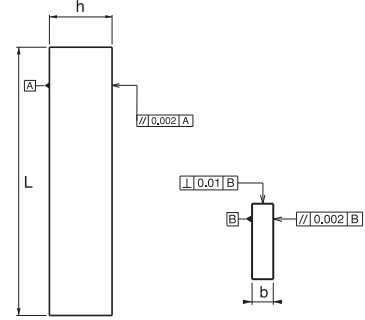


Referans Nr.	c			m	k	b	L	e DIN 912	sıkma kuvveti clamping force kgf	
	min	max								
2210-4954	49	54	(a) 14-16-18-20-22 "T" kanallarda çalışır It is used in "T" Slot	23	4	30	42	M12	3000	250

Ürün Nr. 2210 Çift Açılır Yandan Sıkma

Paralel Set

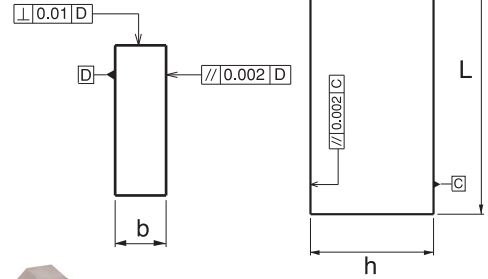
Referans Nr.	h x b x L	tolerans tolerance h	tolerans tolerance b	(kg)	Adet Piece
2230-028	14x10x150	±0.01	±0.01	10.6	2
	16x10x150				2
	18x10x150				2
	20x10x150				2
	22x10x150				2
	24x10x150				2
	26x10x150				2
	28x10x150				2
	30x10x150				2
	32x10x150				2
	35x10x150				2
	40x10x150				2
	45x10x150				2
	50x10x150				2



Ürün Nr. 2230 Paralel Set-28

Paralel Set

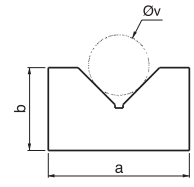
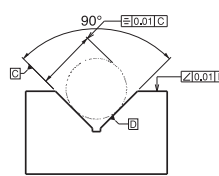
Referans Nr.	h x b x L	tolerans tolerance h	tolerans tolerance b	(kg)	Adet Piece
2250-016	20x 6 x100	±0.01	±0.01	10.8	2
	23x 8 x100				2
	28x10x100				2
	36x12x150				2
	42x14x150				2
	48x16x150				2
	58x18x150				2
	65x22x150				2



Ürün Nr. 2250 Paralel Set-16

"V" Yatak

Referans Nr.	a	b	c	Øv		(g)
				min	max	
2270-140	140	82	40	10	120	2000
2270-204	204	115	66	15	150	6000



Ürün Nr. 2270 "V" Yatak

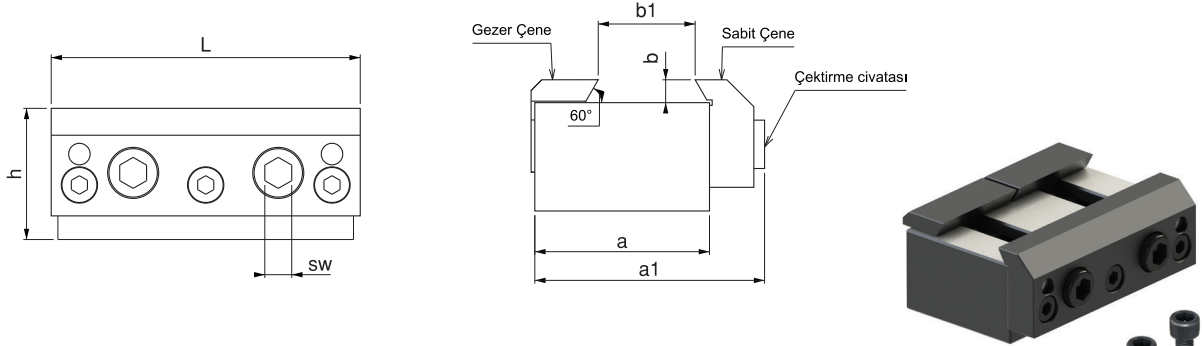
Yedek Baskı Vidası

Referans Nr.	d	Metrik	Alyan Allen
2420-06	40-50-63	M6x0.75	4
2420-08	80-100	M8x1	5



Ürün Nr. 2420 Yedek Baskı Vidası

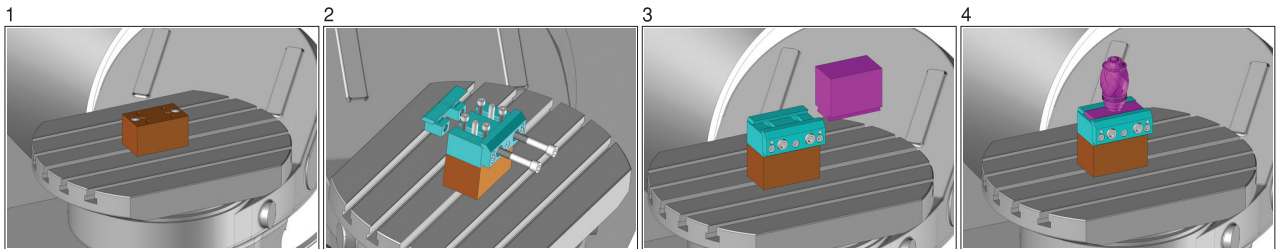
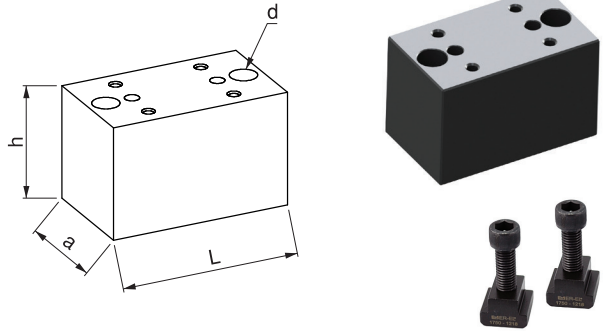
CNC 5 Eksen Parça Bağlama Aparatı



Referans Nr.	L	h	a	a1	b	b1	sw	(kg)
2295-090	90	39	55	73	7	21-35	8	1.3
2295-115	115	49	65	82.5	8.5	31-42	10	2.5
2295-130	130	56	75	98	10	37-48	12	4.0

CNC 5 Eksen Parça Bağlama Takozu

Referans Nr.	a	h	L	d	(kg)
2297-090	55	58	87	M10	2
2297-115	65	68	110	M12	3.6
2297-130	75	80	126.6	M12	5.6



"X V" Yatak

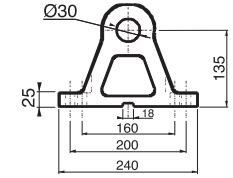
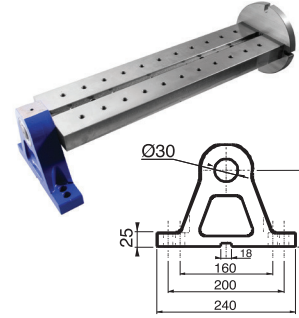
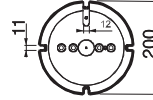
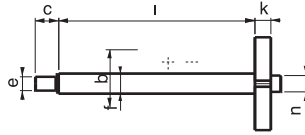
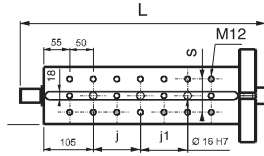
Referans Nr.	a	b	c	Øv1		Øv2		Øv3		Øv4		(kg)
				min	max	min	max	min	max	min	max	
2290-120	120	100	60	10	30	30	60	60	90	90	120	2700
2290-150	150	130	74	15	50	50	80	80	120	120	150	5000



Ürün Nr. 2290 "X V" Yatak

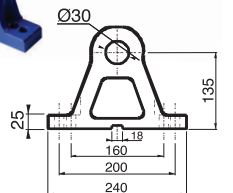
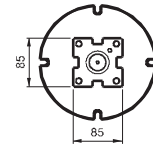
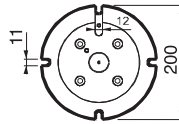
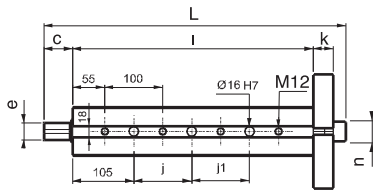
Divizör Kulesi

Referans Nr.	L	i	f	n	b	k	c	e	s	Ø16H7 j	Ø16H7 j1	kg
2450-415L	503.5	415	45	-	125	35	31	30	72	100	100	23.5
2450-615L	703.5	615	50	-	160	35	31	30	90	100	300	39.5

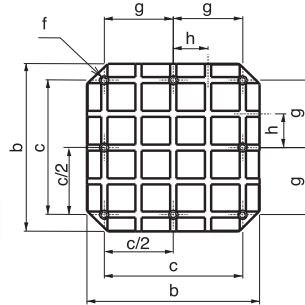


Divizör Kulesi

Referans Nr.	L	i	n	k	e	c	Ø16H7 j	Ø16H7 j1	kg
2470-415K	502	415	-	35	30	31	100	100	22
2470-615K	702	615	-	35	30	31	100	300	34

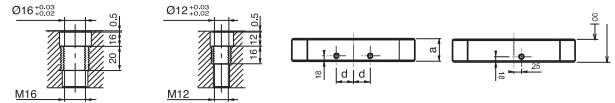
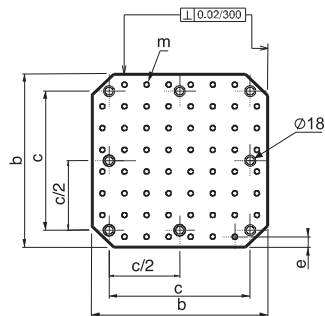
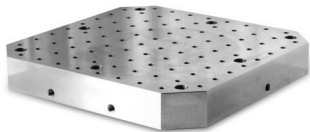


CNC Yatay İşleme Tablası



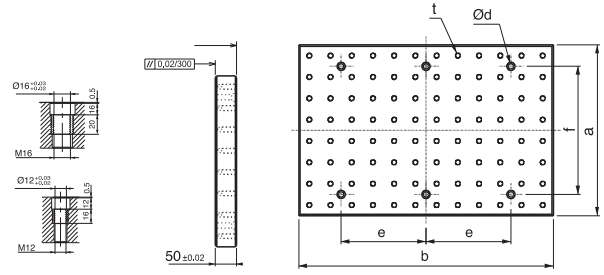
Referans Nr.	a	b	c	d	e	f	g ±0.02	h ±0.02	kg
2490-7540014	75	400	320	14	55	18	160	80	87
2490-7550014	75	500	400	14	75	18	200	100	120
2490-7563014	75	630	500	14	100	18	250	125	197
2490-7540018	75	400	320	18	55	18	160	80	85
2490-7550018	75	500	400	18	75	18	200	100	118
2490-7563018	75	630	500	18	100	18	250	125	195

CNC Yatay İşleme Tablası



Referans Nr.	a	b	c	d	e	m	kg
2510-7540012	75	400	320	55	25	M12	97
2510-7550012	75	500	400	75	25	M12	124
2510-7563012	75	630	500	100	40	M12	201
2510-7540016	75	400	320	55	25	M16	95
2510-7550016	75	500	400	75	25	M16	122
2510-7563016	75	630	500	100	40	M16	199

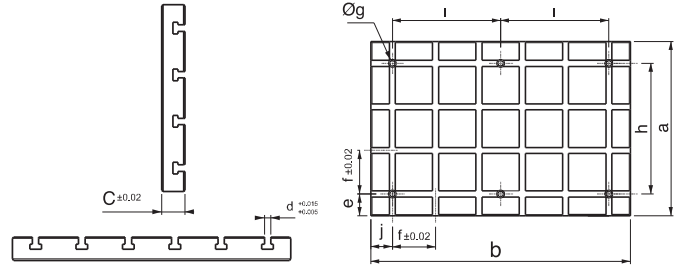
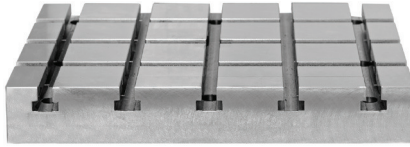
CNC Dik İşleme Pleyti



Referans Nr.	a	b	Ød	e	f	t	kg
2530-040012	400	600	18	-	-	M12	90
2530-050012	500	600	18	-	-	M12	112
2530-060012	600	800	18	-	-	M12	162
2530-140012	400	800	18	-	-	M12	119
2530-145012	450	900	18	-	-	M12	151
2530-150012	500	1000	18	-	-	M12	173

Referans Nr.	a	b	Ød	e	f	t	kg
2530-040016	400	600	18	-	-	M16	87
2530-050016	500	600	18	-	-	M16	108
2530-060016	600	800	18	-	-	M16	155
2530-140016	400	800	18	-	-	M16	115
2530-145016	450	900	18	-	-	M16	146
2530-150016	500	1000	18	-	-	M16	171

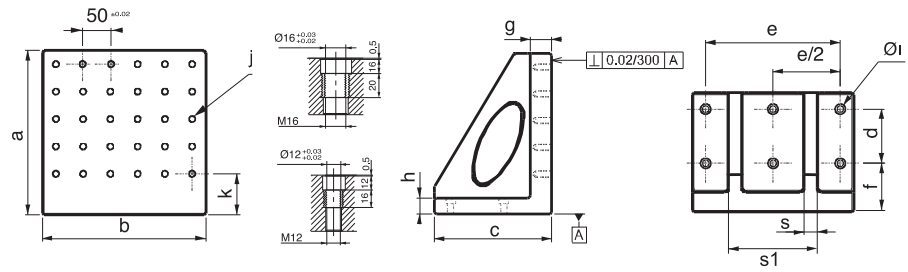
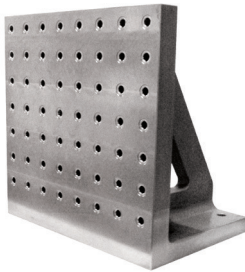
CNC Dik İşleme Pleyti



Referans Nr.	a	b	c	d	e	f	Øg	h	i	j	kg
2550-040014	400	600	60	14	50	100	18	-	-	50	90
2550-050014	500	600	60	14	50	100	18	-	-	50	115
2550-060014	600	800	60	14	50	100	18	-	-	50	198
2550-140014	400	800	60	14	50	100	18	-	-	50	120
2550-145014	450	900	60	14	75	100	18	-	-	50	162
2550-150014	500	1000	60	14	50	100	18	-	-	50	199

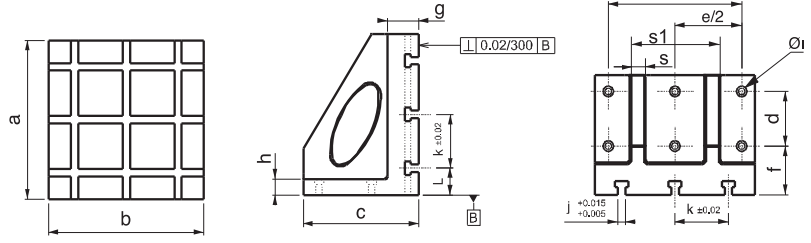
Referans Nr.	a	b	c	d	e	f	Øg	h	i	j	kg
2550-040018	400	600	75	18	50	100	18	-	-	50	114
2550-050018	500	600	75	18	50	100	18	-	-	50	148
2550-060018	600	800	75	18	50	100	18	-	-	50	240
2550-140018	400	800	75	18	50	100	18	-	-	50	158
2550-145018	450	900	75	18	75	100	18	-	-	50	205
2550-150018	500	1000	75	18	50	100	18	-	-	50	258

L Gönye



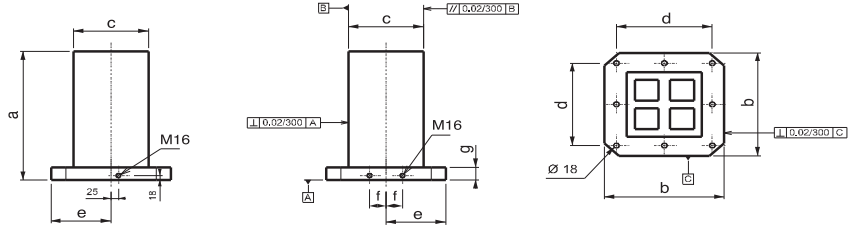
Referans Nr.	a	b	c	d	e	f	g	h	Ø1	j	k	s	s1	kg
2570-30012	300	300	220	100	250	90	40	30	18	M12	75	25	170	50
2570-40012	400	400	280	160	320	90	40	30	18	M12	75	30	240	88
2570-50012	500	500	345	200	400	90	50	35	18	M12	75	35	300	175
2570-63012	630	630	435	250	500	100	50	40	18	M12	105	40	360	298
2570-30016	300	300	220	100	250	90	40	30	18	M16	75	25	170	45
2570-40016	400	400	280	160	320	90	40	30	18	M16	75	30	240	84
2570-50016	500	500	345	200	400	90	50	35	18	M16	75	35	300	170
2570-63016	630	630	435	250	500	100	50	40	18	M16	105	40	360	293

L Gönye



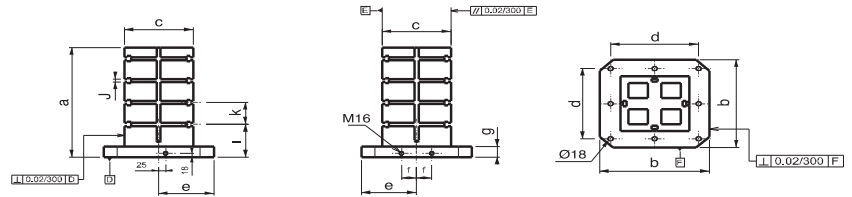
Referans Nr.	a	b	c	d	e	f	g	h	Ø1	j	k	L	s	s1	kg
2590-30014	300	300	220	100	250	90	60	30	18	14	100	50	25	170	50
2590-40014	400	400	300	160	320	90	60	30	18	14	100	50	30	240	100
2590-50014	500	500	350	200	400	90	60	35	18	14	100	50	35	300	185
2590-63014	630	630	450	250	500	100	65	40	18	14	125	65	40	360	315
2590-30018	300	300	220	100	250	90	60	30	18	18	100	50	25	170	50
2590-40018	400	400	300	160	320	90	60	30	18	18	100	50	30	240	98
2590-50018	500	500	350	200	400	90	60	35	18	18	100	50	35	300	174
2590-63018	630	630	450	250	500	100	65	40	18	18	125	65	40	360	286

CNC Yatay İşleme Kulesi



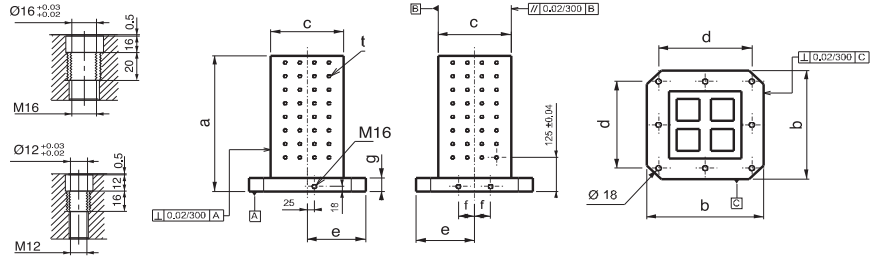
Referans Nr.	a	b	c	d	e	f	g	kg
2610-400250	500	400	250	320	200	55	50	180
2610-500300	600	500	300	400	250	75	50	240
2610-630350	700	630	350	500	315	100	50	390

CNC Yatay İşleme Kulesi



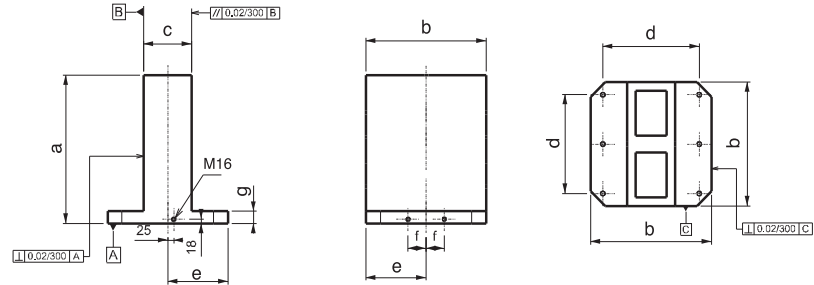
Referans Nr.	a	b	c	d	e	f	g	h	i	k	J (H7)	kg
2630-40025014	500	400	250	320	200	55	50	150	100	14	165	
2630-50030014	600	500	300	400	250	75	50	150	100	14	227	
2630-63035014	700	630	350	500	315	100	50	150	125	14	375	
2630-40025018	500	400	250	320	200	55	50	150	100	18	155	
2630-50030018	600	500	300	400	250	75	50	150	100	18	223	
2630-63035018	700	630	350	500	315	100	50	150	125	18	370	

CNC Yatay İşleme Kulesi



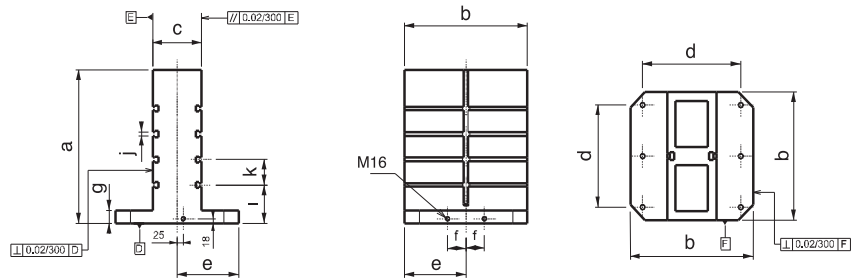
Referans Nr.	a	b	c	d	e	f	g	t	kg
2650-40025012	500	400	250	320	200	55	50	M12	170
2650-50030012	600	500	300	400	250	75	50	M12	230
2650-63035012	700	630	350	500	315	100	50	M12	380
2650-40025016	500	400	250	320	200	55	50	M16	168
2650-50030016	600	500	300	400	250	75	50	M16	228
2650-63035016	700	630	350	500	315	100	50	M16	376

CNC Yatay İşleme Kulesi



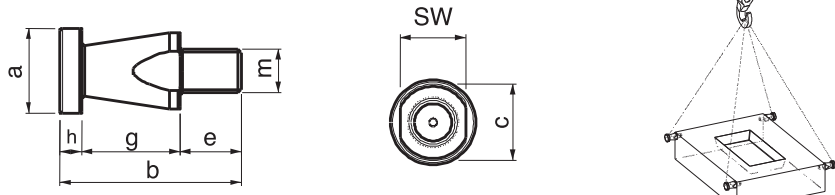
Referans Nr.	a	b	c	d	e	f	g	kg
2670-400150	500	400	150	320	200	55	50	175
2670-500200	600	500	200	400	250	75	50	265
2670-630250	700	630	250	500	315	100	50	484


CNC Yatay İşleme Kulesi



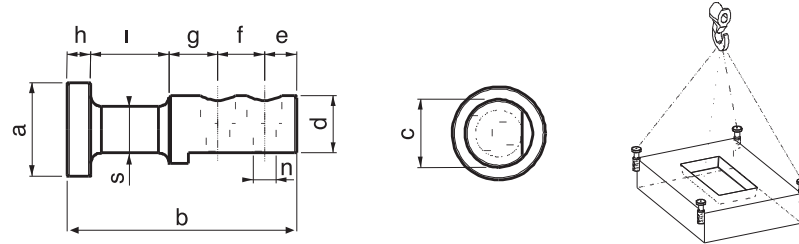
Referans Nr.	a	b	c	d	e	f	g	i	k (± 0.02)	j (H7)	kg
2690-40015014	500	400	150	320	200	55	50	150	100	14	165
2690-50020014	600	500	200	400	250	75	50	150	100	14	240
2690-63025014	700	630	250	500	315	100	50	150	125	14	455
2690-40015018	500	400	150	320	200	55	50	150	100	18	152
2690-50020018	600	500	200	400	250	75	50	150	100	18	238
2690-63025018	700	630	250	500	315	100	50	150	125	18	450


Kalıp Taşıma Mapası



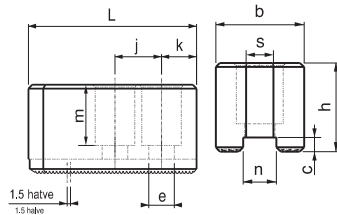
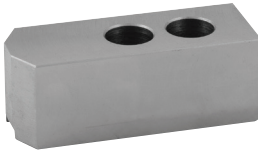
Referans Nr.	m	a	b	c	sw	e	g	h	Bir mapanın taşıma kuvveti Lifting Force of one Ringbolt Kgf	 (g)
2730-016	M16	39	85	35	30	30	45	10	660	400
2730-020	M20	39	85	35	30	30	45	10	1000	420

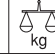
Kalıp Taşıma Mapası



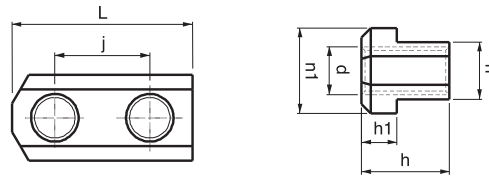
Referans Nr.	a	b	c	d	e	f	g	h	i	n	s	Bir mapanın taşıma kuvveti Lifting Force of one Ringbolt Kgf	 (g)
2750-044	44	108	32	27	15	22	23	11	37	11	22	400	600


CNC Yumuşak Ayak



Referans Nr.	inch	hatve halve	L	b	h	n t7	c	k	j	e	m	s	 kg
2770-0612	6"inc	1.5x60	72	32	32	12	5	15	20	11	22	10	1.2
2770-0814	8"inc	1.5x60	98	37	37	14	5	24	25	13	22	14	2.5
2770-1016	10"inc	1.5x60	110	42	42	16	5	30	30	13	29	14	3.7
2770-1218	12"inc	1.5x60	130	50	52	18	5	39	30	15	32	17	7.0
2770-1221	12"inc	1.5x60	130	50	52	21	5	39	30	17	32	19	6.5
2775-0612	6"inc	1.5x60	72	30	37	12	5	15	20	11	17	10	1.7
2775-0814	8"inc	1.5x60	95	35	67	14	5	24	25	13	19	14	3.6
2775-1016	10"inc	1.5x60	110	40	77	16	5	30	30	13	19	14	6.6
2775-1218	12"inc	1.5x60	130	50	77	18	5	39	30	15	23	17	9.3
2775-1221	12"inc	1.5x60	130	50	77	21	5	39	30	17	23	19	9.2

Yumuşak Ayak "T" Pabucu



Referans Nr.	inch	L	h	n T6	n1	h1	d	j	 (g)
2790-0610	6"inc	38	18.5	12	18	7.5	M10	20	60
2790-0812	8"inc	45	21.5	14	21	8.5	M12	25	80
2790-1012	10"inc	52	21.5	16	22	8.5	M12	30	100
2790-1214	12"inc	55	33.5	18	26.5	13.5	M14	30	225
2790-1216	12"inc	55	27	18	29	13.5	M16	30	220

Delik İşleme Aparatı

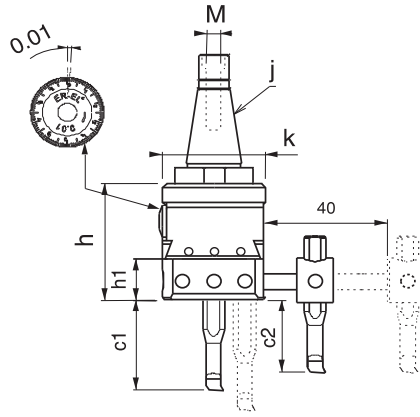
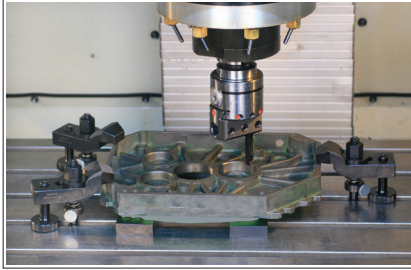
Referans Nr.	J x M	k	h	h1	e	L	L1	L2	kg
2390-010	ISO30-M12	83	99	35	18	95	128	26	5.6
2390-015	ISO40-M16								5.9
2390-020	ISO50-M24								6.1
2390-025	BT40 - M16								6.2
2390-030	BT50 - M24								8.1
2390-035	SK40 - M16								9.1
2390-040	SK50 - M24								9.2
2390-045	MK4 - M16								6.1
2390-050	MK4 Kamalı								5.9
2390-055	MK5 - M20								7.1
2390-060	MK5 Kamalı								6.9



Ürün Nr. 2390 Delik İşleme Aparatı

Referans Nr.	L	L1	e	Kesici uç tipi Cutting Edge type	kg
2395-1	85	-	18	DCMT	112
2395-2	95	-	18	DCMT	165
2395-3	132	-	18	DCMT	210
2395-4	-	128	18	-	408

• Ürünün kızıağındaki alt deliklerine baraları takarak 18mm'den 100mm çapa kadar büyütme 0-100mm kadar derinliğe inebilir.



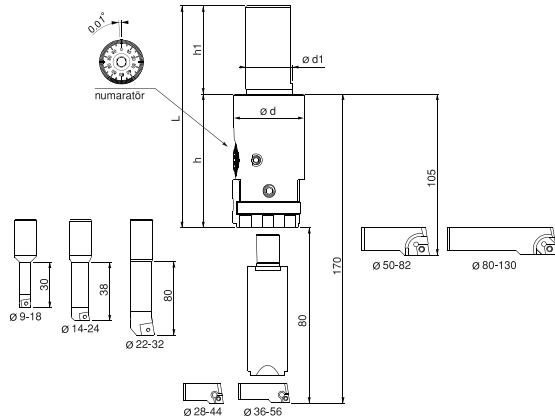
Modülerdir, sabitleme işlemi saat yönüne doğru vidalanarak yapılır.



Ürün Nr. 2390 Delik İşleme Aparatı

• Ürün 0.01 işleme hassasiyeti olup 18mm'den 210mm'ye kadar işlem yapabilir. Modüler sistem oluşu kullanım için kolaylık sağlar. Tutucu değiştirilerek CNC ve Mekanik tezgahlarda kullanım avantajı sağlar. Ürünün 4 ad. delik barası, 1 adet "T" kanal temizleyici ile ahşap kutudadır. Değiştirilebilir tutucular: ISO30-40-50 BT40-50 SK40-50 MK4-5 ile kullanım imkanı..

Hassas Delik İşleme Aparatı



Not:
Ø 52 den sonra
gövdeyle 105 mm
uzatma barayla
170 mm
derinliğe ulaşır.



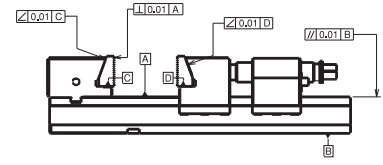
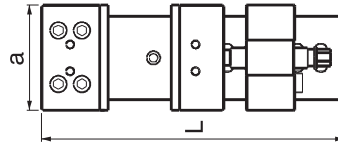
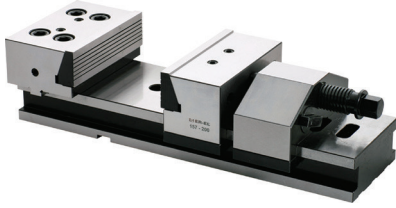
Referans Nr.	d	d1	h	h1	L	kg
2385-130	48	32	91	60	151	2.2

Ürün Nr. 2385 Hassas Delik İşleme Aparatı

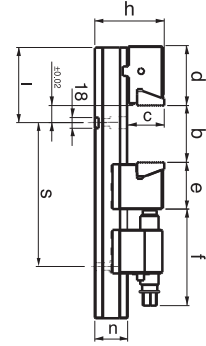
• Ürün 0.01 işleme hassasiyetli olup 9mm'den 130mm çapa 170mm derinliğe işlem yapabilir değiştirilebilir bara ve kartuş özelliği ile mükemmel kullanıma sahiptir

Ürün Nr. 2385 Hassas Delik İşleme Aparatı

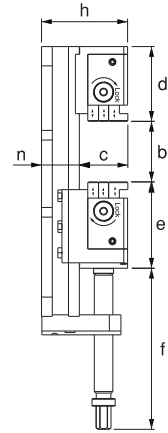
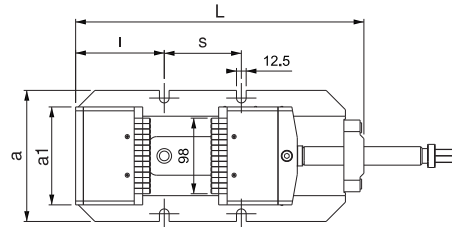
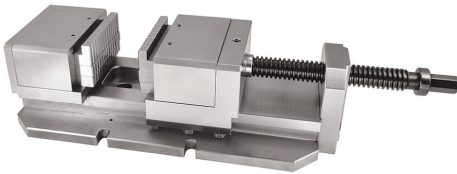
Mekanik Çelik Mengene



MODEL	a	b	c	L	d	e	f	h	i	n	s	sıkma kuvveti clamping force kgf	(kg)
2330-127160	127	0-160	60	414	99	78	160	115	125	55	200	3500	28
2330-157200	157	0-200	60	453	99	78	160	115	125	55	200	4500	37
2330-157300	157	0-300	60	553	99	78	160	115	125	55	250	4500	42
2330-197300	197	0-300	60	553	99	78	160	115	150	55	250	4500	56
2330-197400	197	0-400	60	653	99	78	160	115	150	55	350	4500	62
2330-197500	197	0-500	60	753	99	78	160	115	150	55	200/250	4500	68

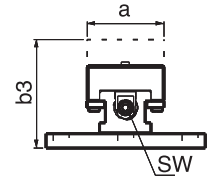
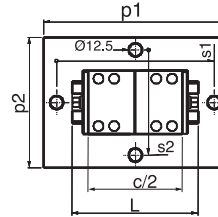
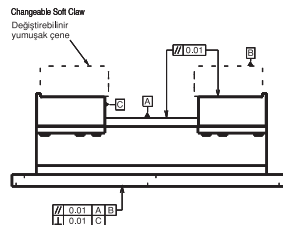
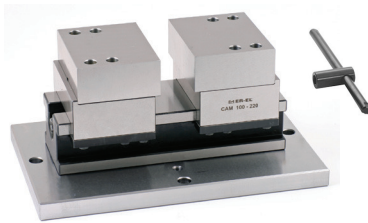


Kavramalı Mengene

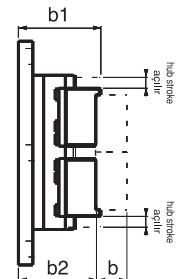


MODEL	a	a1	b	c	e	f	h	l	i	s	n	(kg)
2300-127130	170	127	0-130	63	112	209	112	374	115	100	49	27

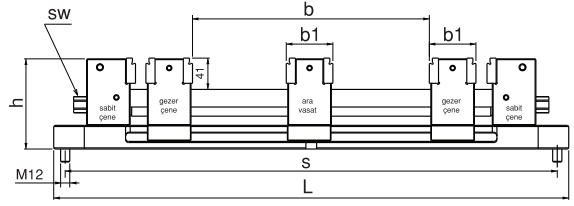
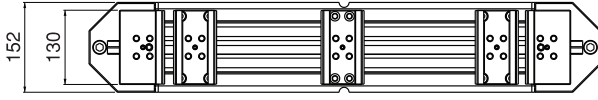
Çift Açılır Çelik Mengene



MODEL	a	L	c/2	açılır opens 2 x mm	iş bağlama kapasitesi Work Piece Coupling Capacity (mm)	b	b1	b2 ±0,02	b3	p1	p2	s1	s2	sıkma kuvveti clamping force kgf	sw	(kg)
2310-060	60	120	90	27	120	23,5	70,5	67,5	91	174	124	150	100	1000	9	5
2310-078	78	180	130	40	180	33	97	93	126	224	124	200	100	1600	12	10
2310-100	100	220	154	48	220	35	99	95	130	274	174	250	150	1600	12	19
2310-125	125	260	174	62	260	38	108	103	141	324	174	300	150	2200	14	26
2310-157	157	350	208	86	350	46	123	118	164	424	224	400	200	2200	17	52



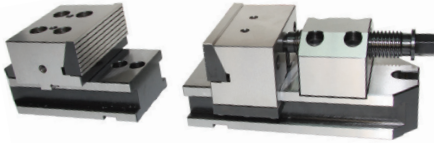
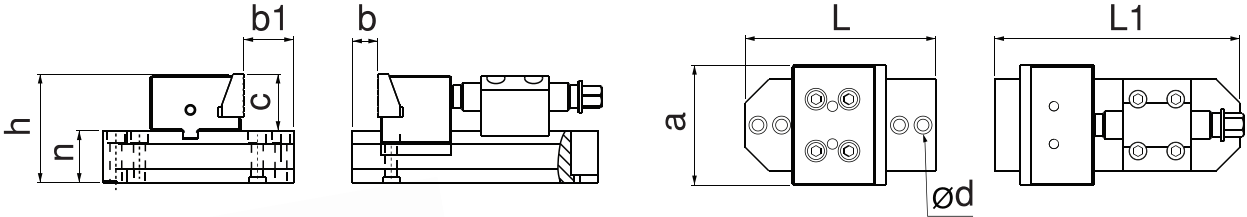
Grup Çift Açılır Çelik Mengene



MODEL	b	b1	L	h	s	SW	Standart bağlama adedi coupling piece	Sıkma kuvveti Clamping force kgf	kg
2375-092	92	61	430	119	400	19	2	2000	39
2375-192	192	61	530	119	500	19	2	2000	41
2375-342	342	61	680	119	650	19	2	2000	44
2375-442	442	61	780	119	750	19	2	2000	48

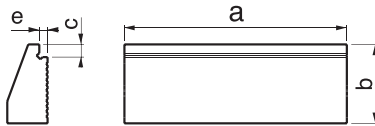
MODEL	İş Bağlama Adetleri / Volume Workholding				
	1 iş parçası 1 Workpiece	2 iş parçası 2 Workpiece	3 iş parçası 3 Workpiece	4 iş parçası 4 Workpiece	5 iş parçası 5 Workpiece
2375-092	92	15	-	-	-
2375-192	192	66	23	-	-
2375-342	342	140	73	39.5	-
2375-442	442	190	106.5	64.5	39

Modüler Mekanik Çelik Mengene

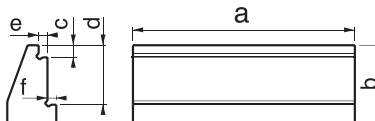


MODEL	a	L	L1	b1	b	c	h	n	ød	Sıkma kuvveti Clamping force kgf	kg
2345-127	127	202	260	53	0-58	60	115	55	12.5	3500	28

MÇM Faturalı Çeneler

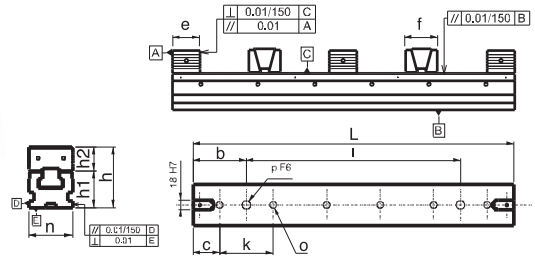


MODEL	a	b	c	e	kg
2335-127	127	45	7	5	1000



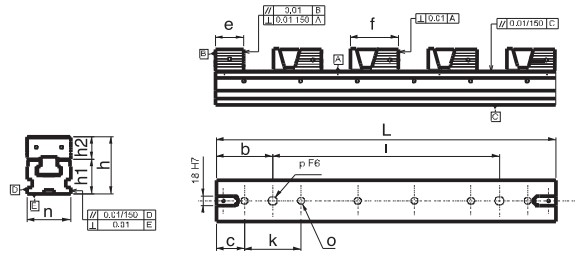
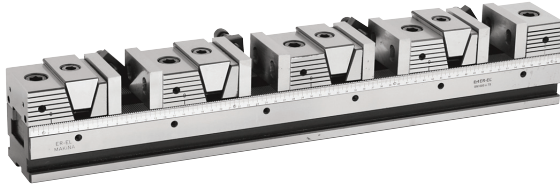
MODEL	a	b	c	d	e	f	kg
2340-127	127	45	7	34	5	5	950

Çok Çeneli Seri Mengene



MODEL	L	n	h1	h2	h	o	e	f	b	c	k	>	p F6
2435-055300	300	55	48	25	73	12.5	37	37	100	50	100	100	18
2435-055500	500	55	48	25	73	12.5	37	37	100	50	100	300	18
2435-075400	400	75	63	38	101	12.5	47	57	100	50	100	200	18
2435-075600	600	75	63	38	101	12.5	47	57	100	50	100	400	18
2435-100400	400	100	65	38	103	12.5	47	57	100	50	100	200	18
2435-100600	600	100	65	38	103	12.5	47	57	100	50	100	400	18

Çok Çeneli Seri Mengene



MODEL	L	n	h1	h2	h	o	e	f	b	c	k	>	p F6	Standartda bağlama adedi
2430-055300	300	55	48	25	73	12.5	37	60	100	50	100	100	18	2
2430-055500	500	55	48	25	73	12.5	37	60	100	50	100	300	18	4
2430-075400	400	75	63	38	101	12.5	47	82	100	50	100	200	18	2
2430-075600	600	75	63	38	101	12.5	47	82	100	50	100	400	18	4
2430-100400	400	100	65	38	103	12.5	47	82	100	50	100	200	18	2
2430-100600	600	100	65	38	103	12.5	47	82	100	50	100	400	18	3

Çatal Kule

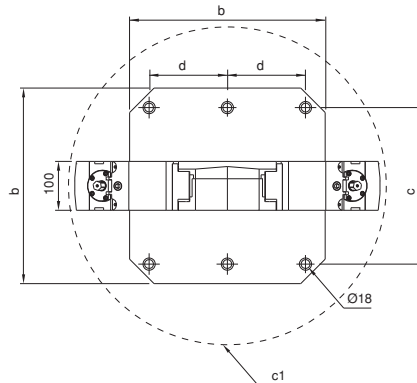
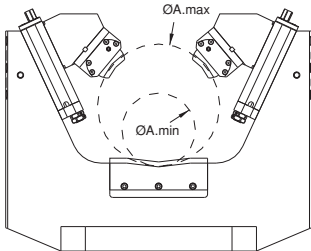
Referans Nr.	b	d	c	c1	A min.	A max.	Sıkma kuvveti Clamping force kgf
2600-400400	400	160	320	-	-	-	4000
2600-500500	500	200	400	-	-	-	4000
2600-630630	630	250	500	-	-	-	4000

Ürün Nr. 2600 Çatal Kule

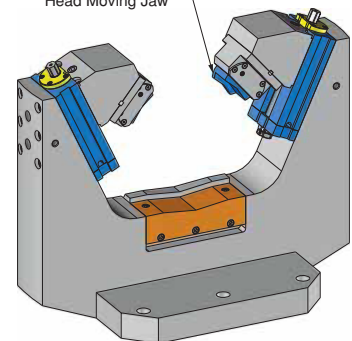
- Kullanım alanı: CNC yatay işleme, Borvekt tezgahlarında silindirik parçaların iki yüzeyinde işleme kolaylığı sağlar.
- Hareketli yüzeylerin tamamı hassas taşlanmış ve sertleştirilmiştir.

Product Nr. 2600 Fork Tower

- Application area: Provides better operation on both sides of cylindrical workpieces on cnc horizontal machines and bohrwerks.
- Entire moving surface is sensitively grinded and hardened.



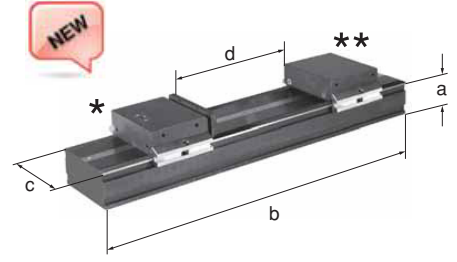
Oynar Başlı Çene
Head Moving Jaw



Seri Mengene

Referans Nr.	a	b	c	d
2440-SL080400	35	400	80	0-289
2440-SL080500	35	500	80	0-389
2440-SL080600	35	600	80	0-489

Ürün Nr. 2440 Seri Mengene
Product Nr. 2440 Serial Vice



Gezer Çene Çeşitleri / Portable Jaw Types



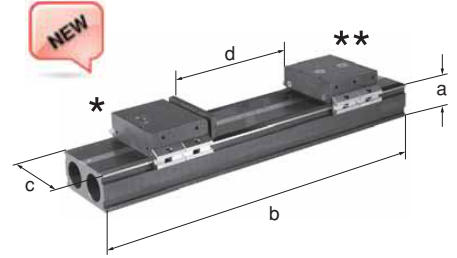
Dayama Çeşitleri / Stopper Types



Referans Nr.	a	b	c	d
2440-SL120300	60	300	120	0-90
2440-SL120600	60	600	120	0-390
2440-SL120800	60	800	120	0-590

Ürün Nr. 2440 Seri Mengene
Product Nr. 2440 Serial Vice

Seri Mengene



Gezer Çene Çeşitleri



Dayama



Referans Nr.
2440-SL80120

Ürün Nr. 2440 Seri Mengene Dayaması
Product Nr. 2440 Serial Vice Workpiece Stop

Seri Mengene Dayaması

